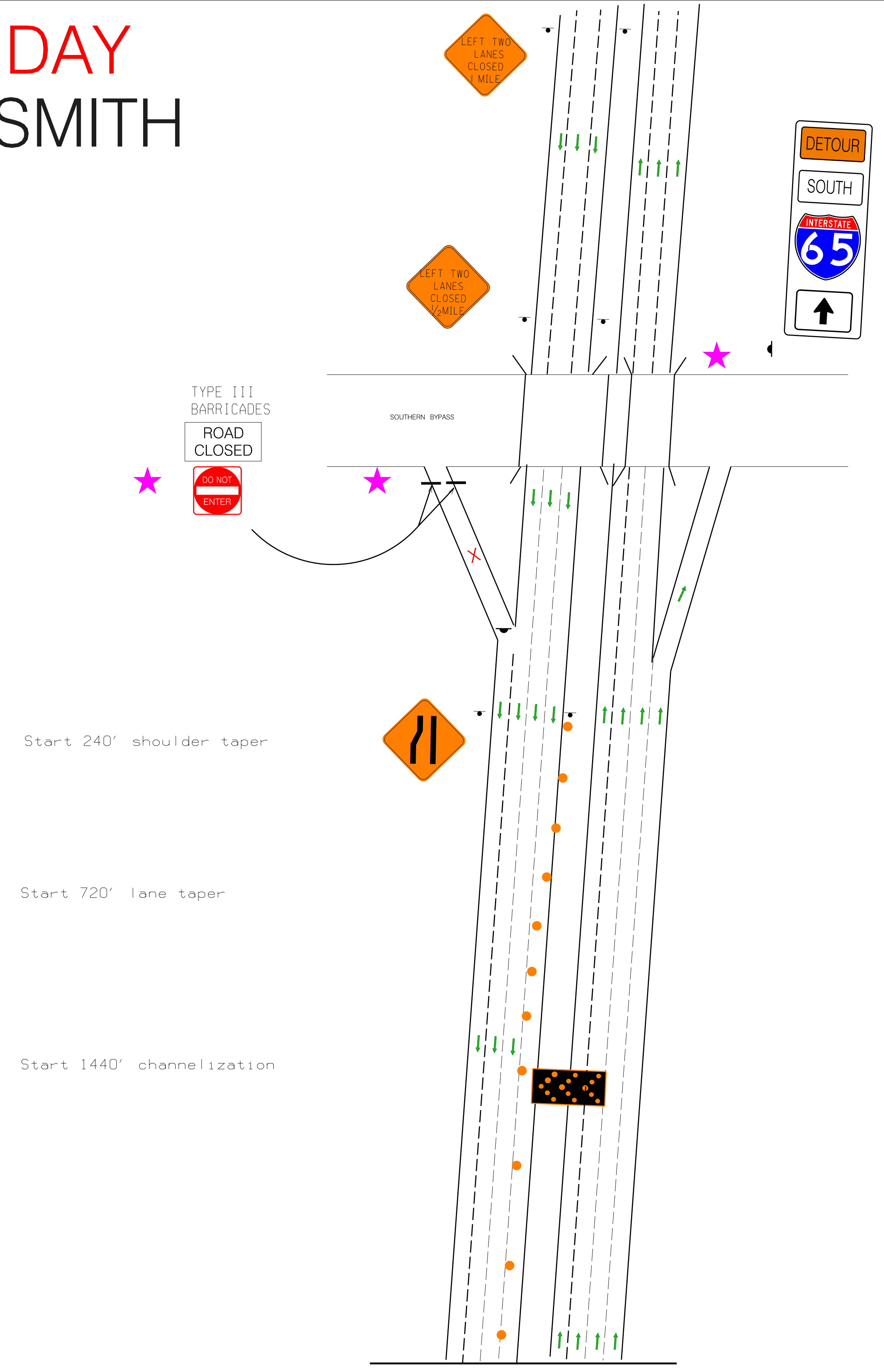
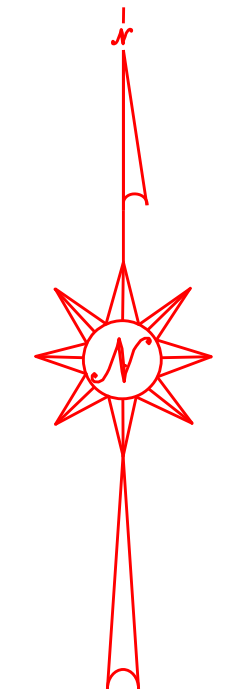


27 PHILLIP DAY ANDREW SMITH

NB TERMINUS EXIT 167 US80 TO US31



Start 240' shoulder taper

Start 720' lane taper

Start 1440' channelization

MATCHLINE B
 CMS MESSAGE:
 "I-65 SOUTH CLOSED"
 "DETOUR NEXT EXIT"

PERSONNEL	TRUCK No.
ARTIS BAXTER 334-430-2986	ST-16107 ATTENUATOR
AMAD JACKSON	ST-16717
KYLE JUNKIN	ST-17255 FORD CREW CAB/SERVICE
ANDRE TYSON	
RONALD DENHAM	
WAYNE JACKSON	