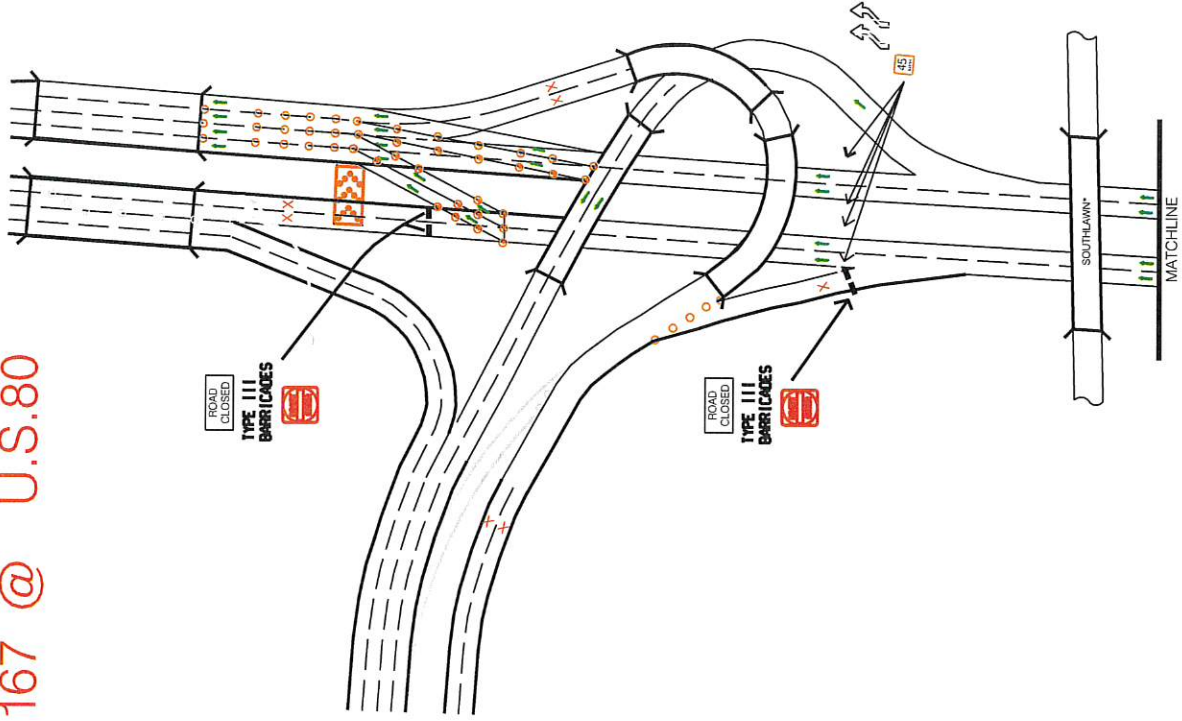


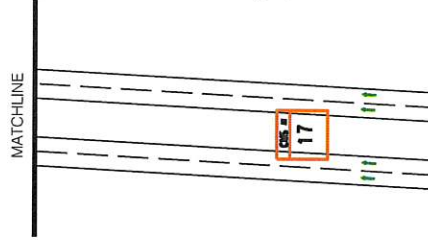
# 26 LOCATION 26 EXIT 167 @ U.S.80

# DAL OGLE JUDSON YOUNG

MONTGOMERY AREA TRAFFIC CONTROL PERSONNEL IN PLACE TEAM LEADERS ON SHLD IN PLACE LOCATION INSPECTED



PERSONNEL	TRUCK No.
EDWARD EVERSON	ST-16919 CREW CAB
LAMAR ANDERSON	ST-18242 EXT CAB
JONATHAN POWELL	



CMS Message:  
"ALL LANES I-65 N."  
"LANE SHIFT AHEAD"