

15

A

ERIC BERTOLOTTI JOHN EMERY

LOCATION	PERSONNEL	CLASS	TRUCK NUMBER	CELL NO.	MISC. EQUIPMENT
Site 15 Exit 101 CR-29	SEAN KELLY	TMT I-CL	ST-18464 CREWCAB		W/TRAILER,
	DENISHIA ELLIOTT	TMT I	ST-18139 PICKUP		W/VMS
	BRANDON JACKSON	TMT I			

22

**MOBILE AREA
IN PLACE
PERSONNEL**

23

TL/ATL IN PLACE

26

**READY TO
IMPLEMENT**

30

**NOTIFY TL TO
PROCEDURE**

46

**SB ATL
PASSED**

57

**ATL'S NB
HAVE PASSED**

59

**INTERCHANGE
CLEAR**

67

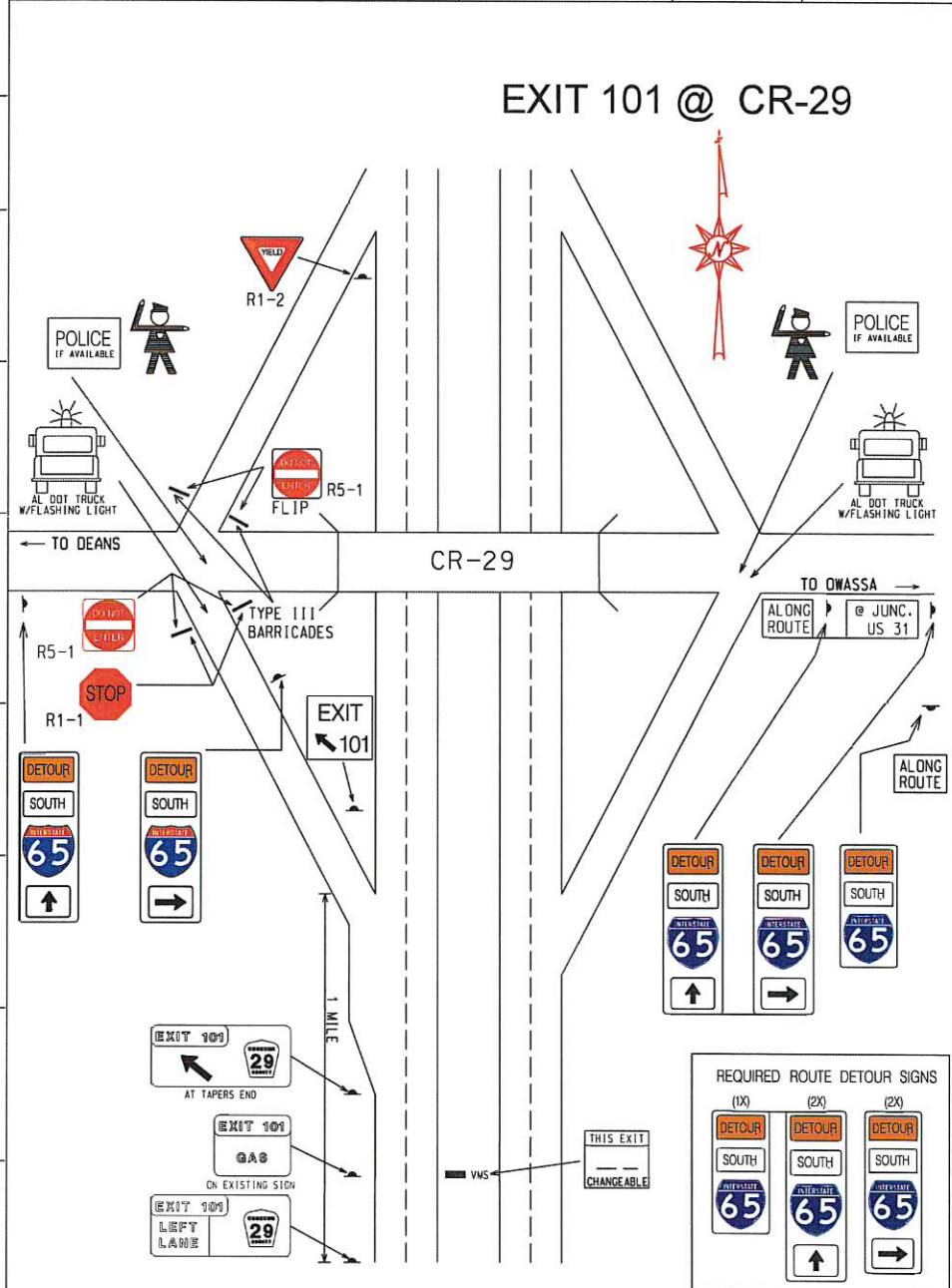
**TRAFFIC
REVERSED
1ST WAVE**

80

1ST WAVE

104

**TRAFFIC
NORMAL**



- REQUIRED**
- 2 TYPE III BARRICADES
 - W/STOP SIGNS
 - W/DO NOT ENTER
 - 1 YIELD SIGNS
 - 2 LAW ENFORCEMENT
 - 5 ROUTE DETOUR SIGNS
 - 1 EXIT AHEAD SIGNS
 - 1 EXIT LT. LN. SIGN
 - 1 EXIT SERVICES SIGN
 - 1 EXIT ARROW SIGN

NOTE : COVER ALL
INAPPROPRIATE SIGNS