

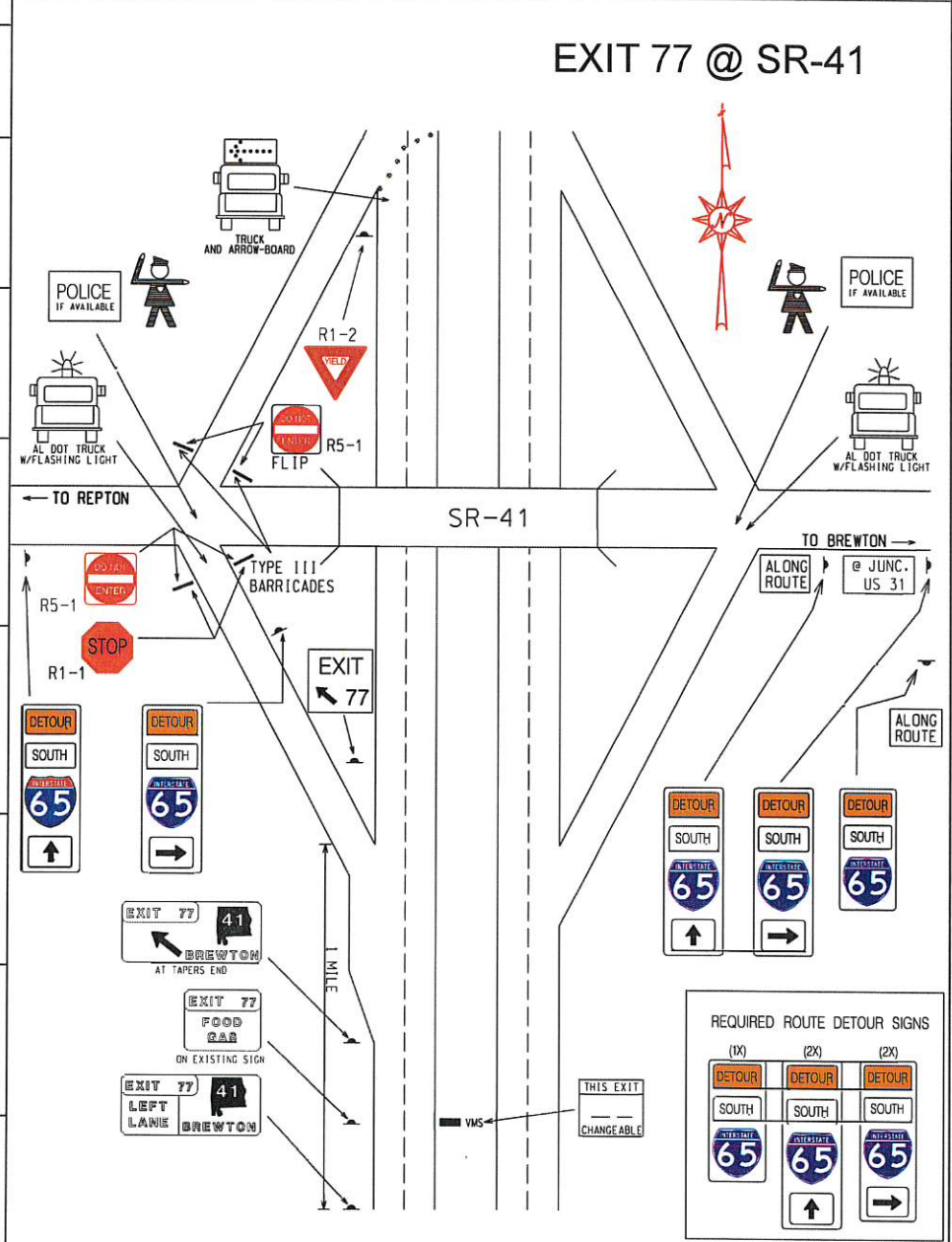
11

B

BRAD DARDEN TODD CONNELL

LOCATION	PERSONNEL	CLASS	TRUCK NUMBER	CELL NO.	MISC. EQUIPMENT
Site 11 Exit 77 SR-41	MICHAEL GRIFFIN	TMT III- CL	ST-17497 CREWCAB		TM/ARW BRD, W/TLR
	JAMES LEE	TMT III			
	RICHARD BROWN	TMT II	ST-18399 PICKUP		W/VMS
					W/VMS

22	MOBILE AREA IN PLACE PERSONNEL
23	TL/ATL IN PLACE
26	READY TO IMPLEMENT
30	NOTIFY TL TO BEGIN PROCEDURE
40	ATL ARRIVES AT TYPE B INTERCHANGE
49	ATL ARRIVES AT TYPE B INTERCHANGE
57	ATL'S NB HAVE PASSED
59	INTERCHANGE CLEAR
67	TRAFFIC REVERSED 1ST WAVE
80	1ST WAVE
104	TRAFFIC NORMAL



- REQUIRED**
- 2 TYPE III BARRICADES W/STOP SIGNS W/DO NOT ENTER
 - 1 YIELD SIGNS
 - 2 LAW ENFORCEMENT
 - 5 ROUTE DETOUR SIGNS
 - 1 EXIT AHEAD SIGNS
 - 1 EXIT LT. LN. SIGN
 - 1 EXIT SERVICES SIGN
 - 1 EXIT ARROW SIGN
 - 2 ALL TRAFFIC MUST EXIT 1/2 MILE SIGNS
 - 2 ALL TRAFFIC MUST EXIT 1 MILE SIGNS

NOTE : COVER ALL INAPPROPRIATE SIGNS