

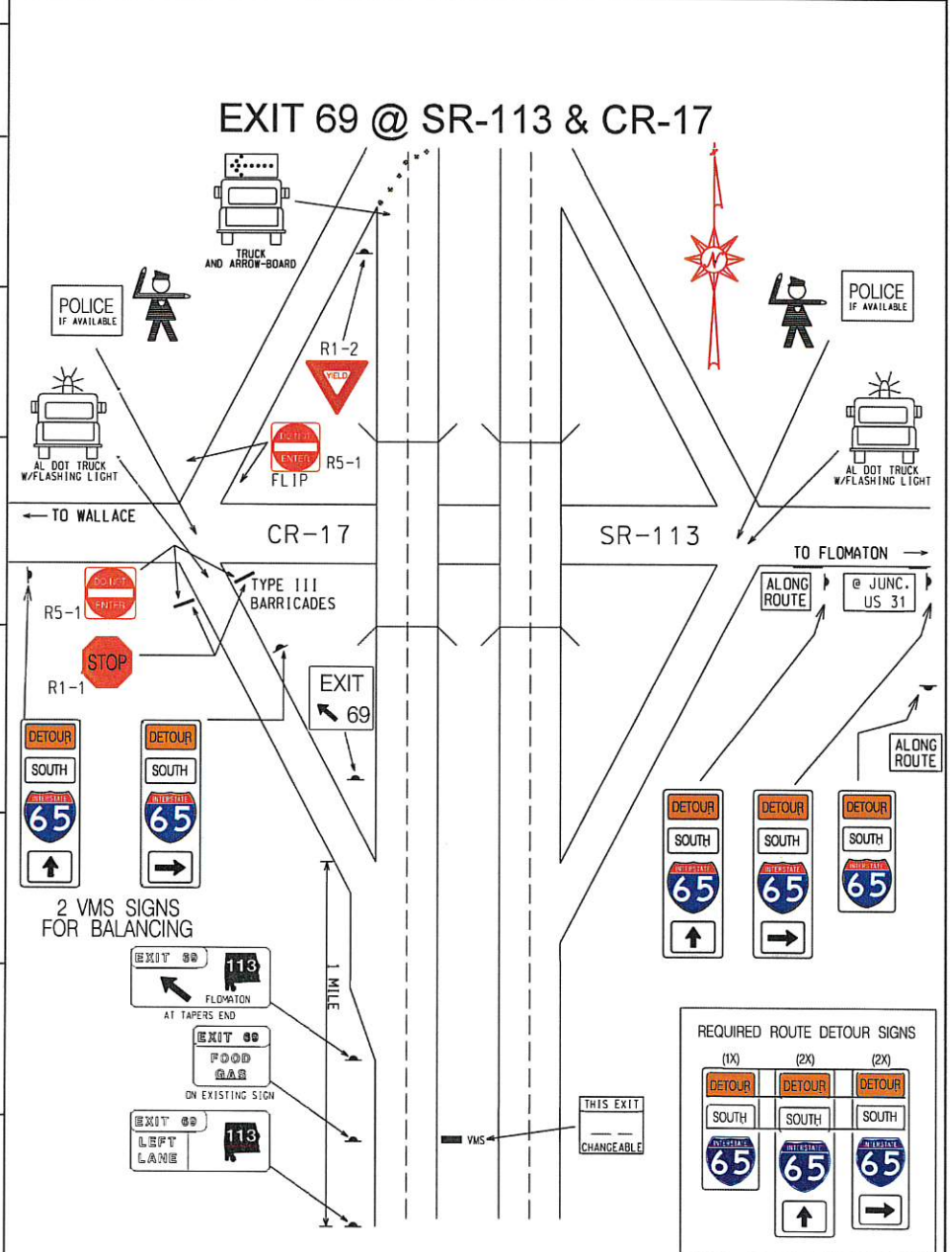
# 10

## B

# JASON DANIELS ANDY LASTER

LOCATION	PERSONNEL	CLASS	TRUCK NUMBER	CELL NO.	MISC. EQUIPMENT
Site 10 Exit 69 SR-113	MICHAEL KING	TMT II-CL	ST-17496 CREWCAB		TM/ARW BRD, W/TCE
	LAPRINCETON	TMT I	ST-18053 VAN		W/VMS
	MIKE BLACKMON	TMT II	ST-18184 PICKUP		

22	<b>MOBILE AREA IN PLACE PERSONNEL</b>
23	<b>TL/ATL IN PLACE</b>
26	<b>READY TO IMPLEMENT</b>
30	<b>NOTIFY TL TO BEGIN PROCEDURE</b>
40	<b>ATL ARRIVES AT TYPE B INTERCHANGE</b>
49	<b>ATL ARRIVES AT TYPE B INTERCHANGE</b>
57	<b>ATL'S NB HAVE PASSED</b>
59	<b>INTERCHANGE CLEAR</b>
67	<b>TRAFFIC REVERSED 1ST WAVE</b>
80	<b>1ST WAVE</b>
104	<b>TRAFFIC NORMAL</b>



- REQUIRED**
- 2 TYPE III BARRICADES W/STOP SIGNS W/DO NOT ENTER
  - 1 YIELD SIGNS
  - 2 LAW ENFORCEMENT
  - 5 ROUTE DETOUR SIGNS
  - 1 EXIT AHEAD SIGNS
  - 1 EXIT LT. LN. SIGN
  - 1 EXIT SERVICES SIGN
  - 1 EXIT ARROW SIGN
  - 2 ALL TRAFFIC MUST EXIT 1/2 MILE SIGNS
  - 2 ALL TRAFFIC MUST EXIT 1 MILE SIGNS

NOTE : COVER ALL INAPPROPRIATE SIGNS