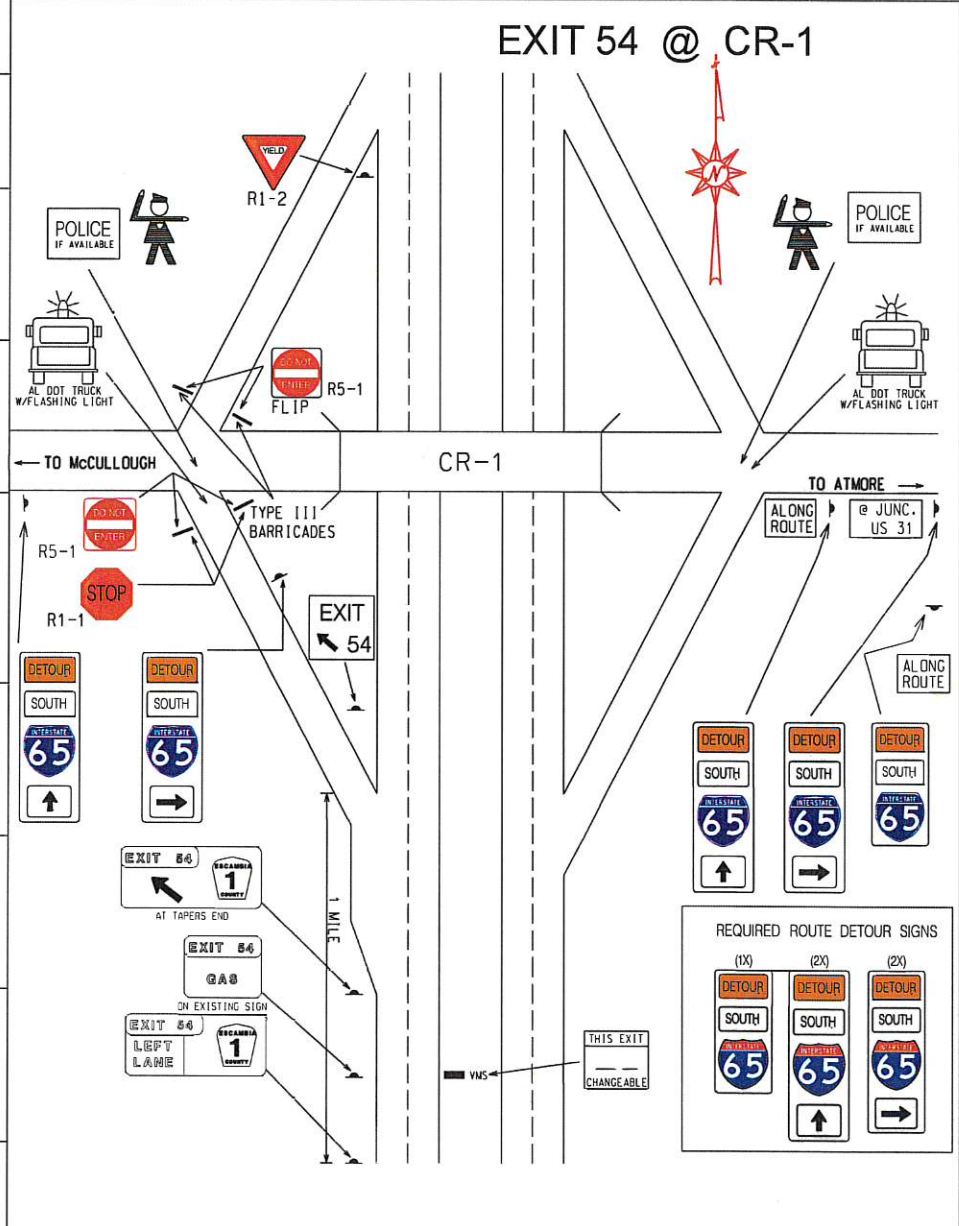


6 A

JASON WATKINS JONATHAN RASMUSSEN

LOCATION	PERSONNEL	CLASS	TRUCK NUMBER	CELL NO.	MISC. EQUIPMENT
Site 6 Exit 54 CR-1	ANDRE AUSTIN	TMT III-CL	ST-17374 Crew Cab		W/ Trailer
	TAYLOR MITCHELL	TMT I			
	JAMIE HOWARD	TMT II			
	JEREMY MILLER	EA II			
	KENNY JAMES	TMT III	ST-17955 PICKUP		W/ VMS
	ALLEN JOHNSON	TMT II			

22	MOBILE AREA IN PLACE PERSONNEL
23	TL/ATL IN PLACE
26	READY TO IMPLEMENT
30	NOTIFY TL TO PROCEDURE
46	SB ATL PASSED
57	ATL'S NB HAVE PASSED
59	INTERCHANGE CLEAR
67	TRAFFIC REVERSED 1ST WAVE
80	1ST WAVE
104	TRAFFIC NORMAL



REQUIRED	
2	TYPE III BARRICADES W/STOP SIGNS W/DO NOT ENTER
1	YIELD SIGNS
2	LAW ENFORCEMENT
5	ROUTE DETOUR SIGNS
1	EXIT AHEAD SIGNS
1	EXIT LT. LN. SIGN
1	EXIT SERVICES SIGN
1	EXIT ARROW SIGN

NOTE : COVER ALL INAPPROPRIATE SIGNS