

4 B

BILL WODDAIL
SUSAN CANADAY
DANIEL JONES

22	MOBILE AREA IN PLACE PERSONNEL
23	TL/ATL IN PLACE

LOCATION	PERSONNEL	CLASS	TRUCK NUMBER	CELL NO.	MISC. EQUIPMENT
Site 4 Exit 37 SR-287 (CR-47)	JEREMY	TMT III-CL	ST-17957 Pickup		W/ Trailer
	JO SIMMONS	TMT III	ST-17373 Crew Cab		W/ VMS
	WILLIE MIMS	TMT II			
	GAVIN THOMPSON	TMT II			
	MACKS HASTINGS	TMT II	ST-17188 Flat Crew		ARROW BOARD
	RICKY HENMAN	TMT I			

26	READY TO IMPLEMENT
----	---------------------------

30	NOTIFY TL TO BEGIN PROCEDURE
----	-------------------------------------

40	ATL ARRIVES AT TYPE B INTERCHANGE
----	--

49	ATL ARRIVES AT TYPE B INTERCHANGE
----	--

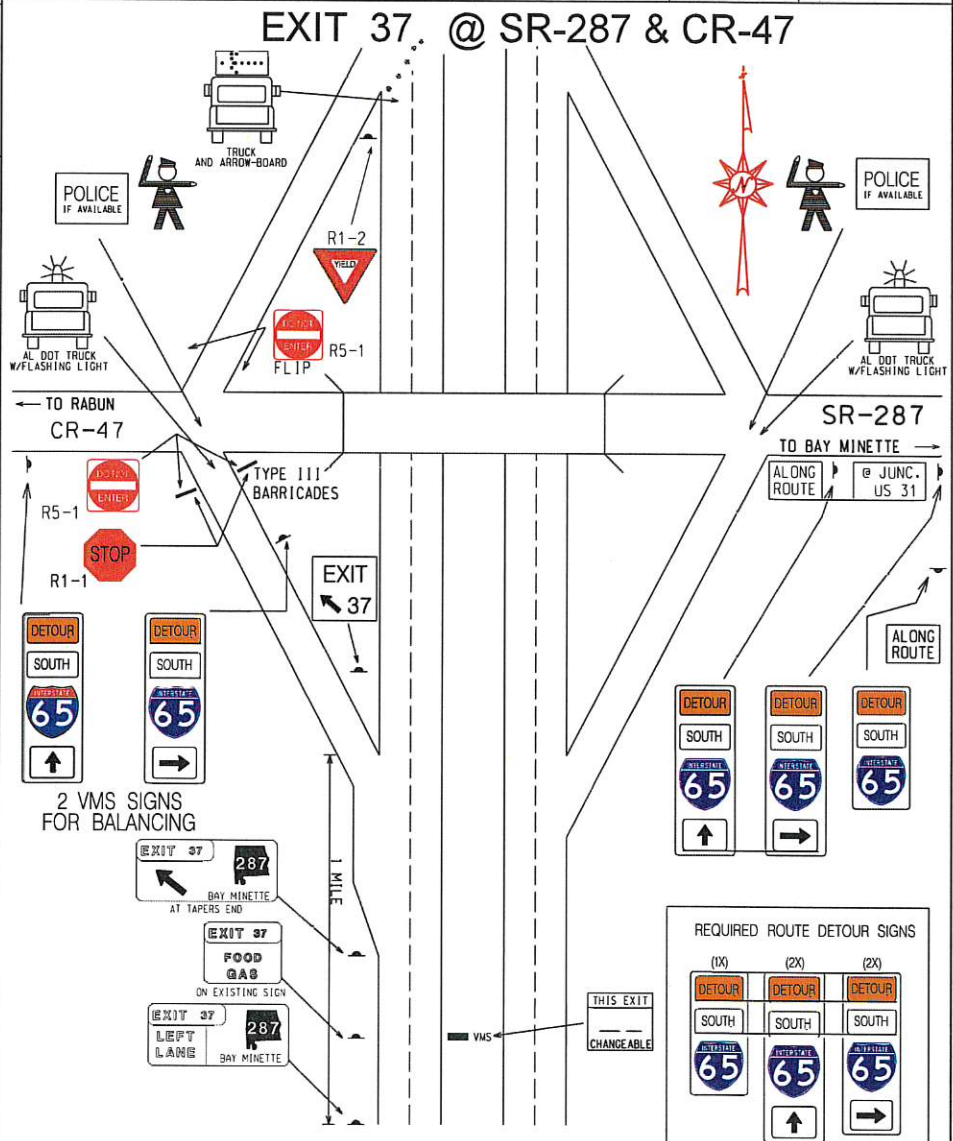
57	ATL'S NB HAVE PASSED
----	-----------------------------

59	INTERCHANGE CLEAR
----	--------------------------

67	TRAFFIC REVERSED 1ST WAVE
----	----------------------------------

80	1ST WAVE
----	-----------------

104	TRAFFIC NORMAL
-----	-----------------------



- REQUIRED**
- 2 TYPE III BARRICADES W/STOP SIGNS W/DO NOT ENTER
 - 1 YIELD SIGNS
 - 2 LAW ENFORCEMENT
 - 5 ROUTE DETOUR SIGNS
 - 1 EXIT AHEAD SIGNS
 - 1 EXIT LT. LN. SIGN
 - 1 EXIT SERVICES SIGN
 - 1 EXIT ARROW SIGN
 - 1 ALL TRAFFIC MUST EXIT 1/2 MILE SIGNS
 - 2 ALL TRAFFIC MUST EXIT 1 MILE SIGNS

NOTE : COVER ALL INAPPROPRIATE SIGNS