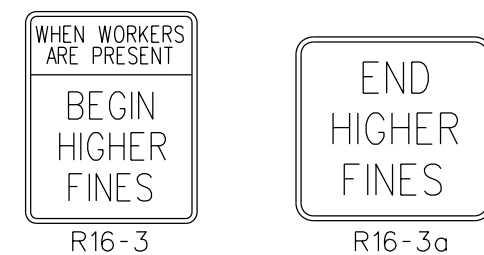
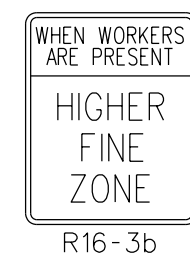


**END ROAD WORK** G20-2  
 (PLACE 500 FT. PAST THE WORK LIMITS OR SEE TCP NOTE NO. 30)

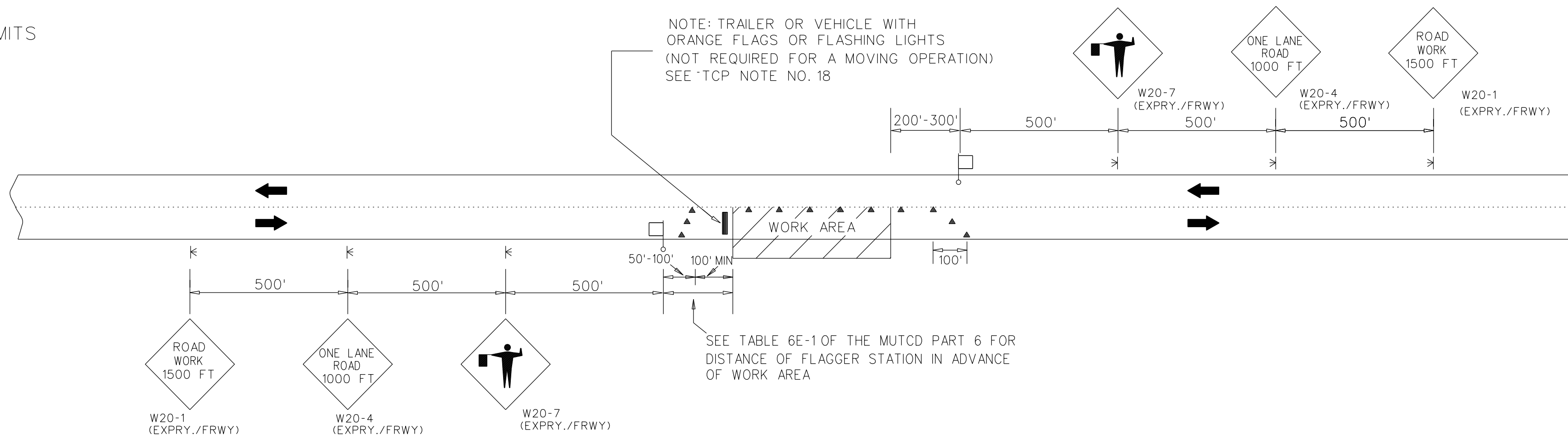
**ROAD WORK NEXT XX MILES** G20-1  
 (PLACE IN ADVANCE OF THE WORK LIMITS OR SEE TCP NOTE NO. 30)



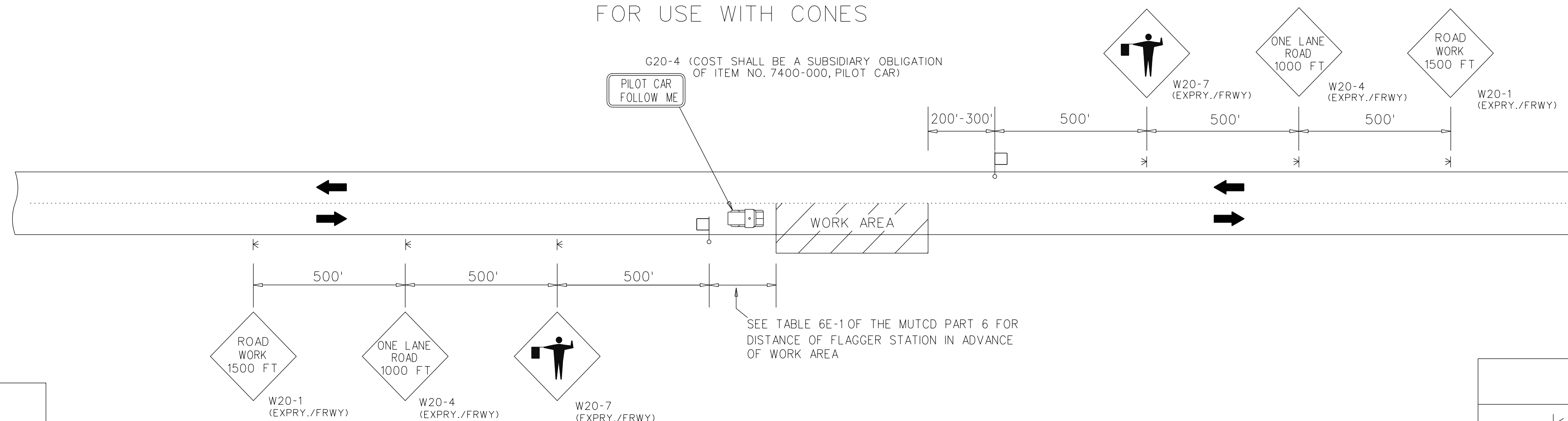
(PLACE WITHIN 500 FT. OF THE WORK LIMITS OR SEE TCP NOTE NO. 30)



SEE TCP NOTE NO. 30

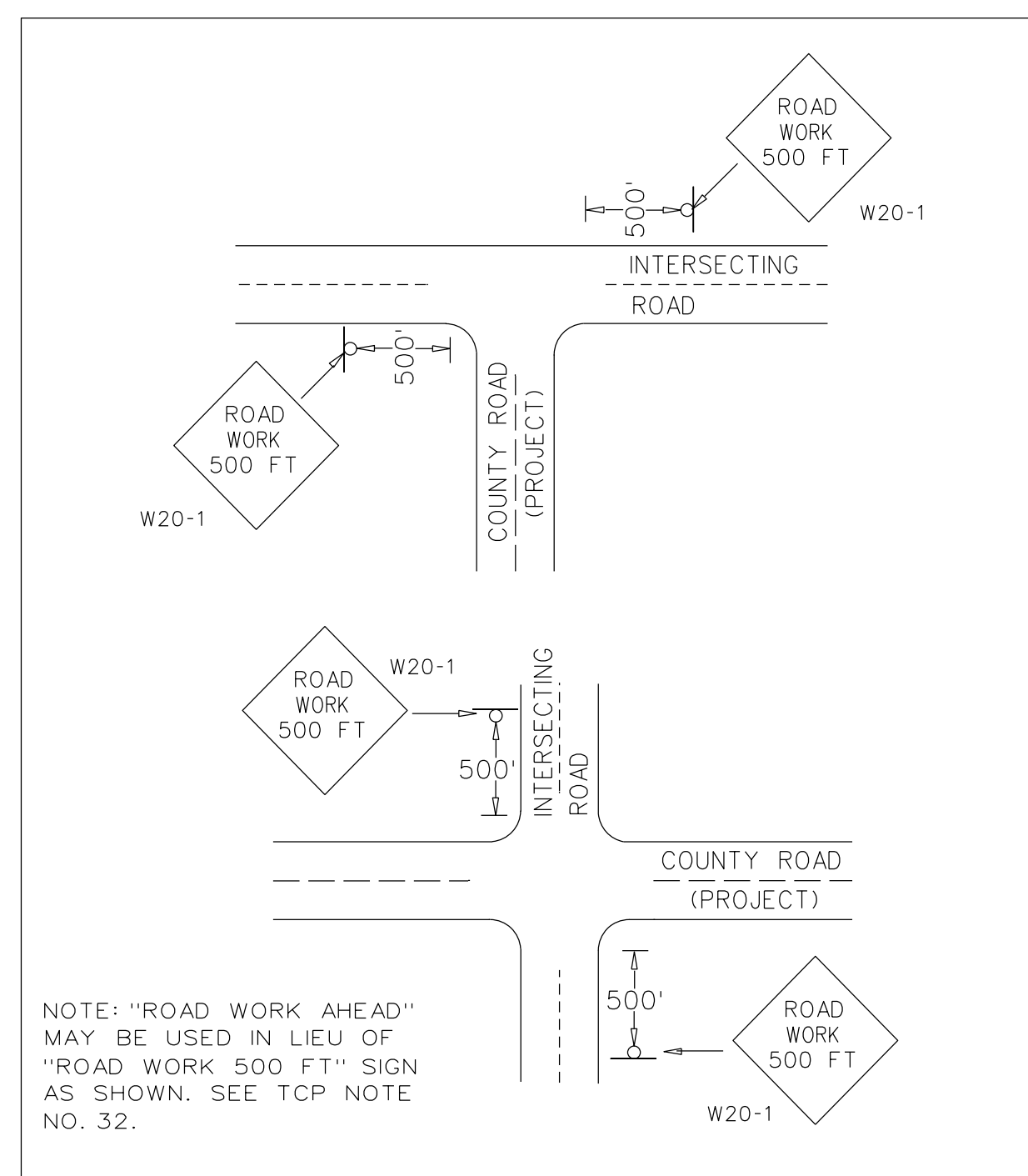


**TWO LANE HIGHWAY - ONE LANE CLOSED  
 FOR USE WITH CONES**



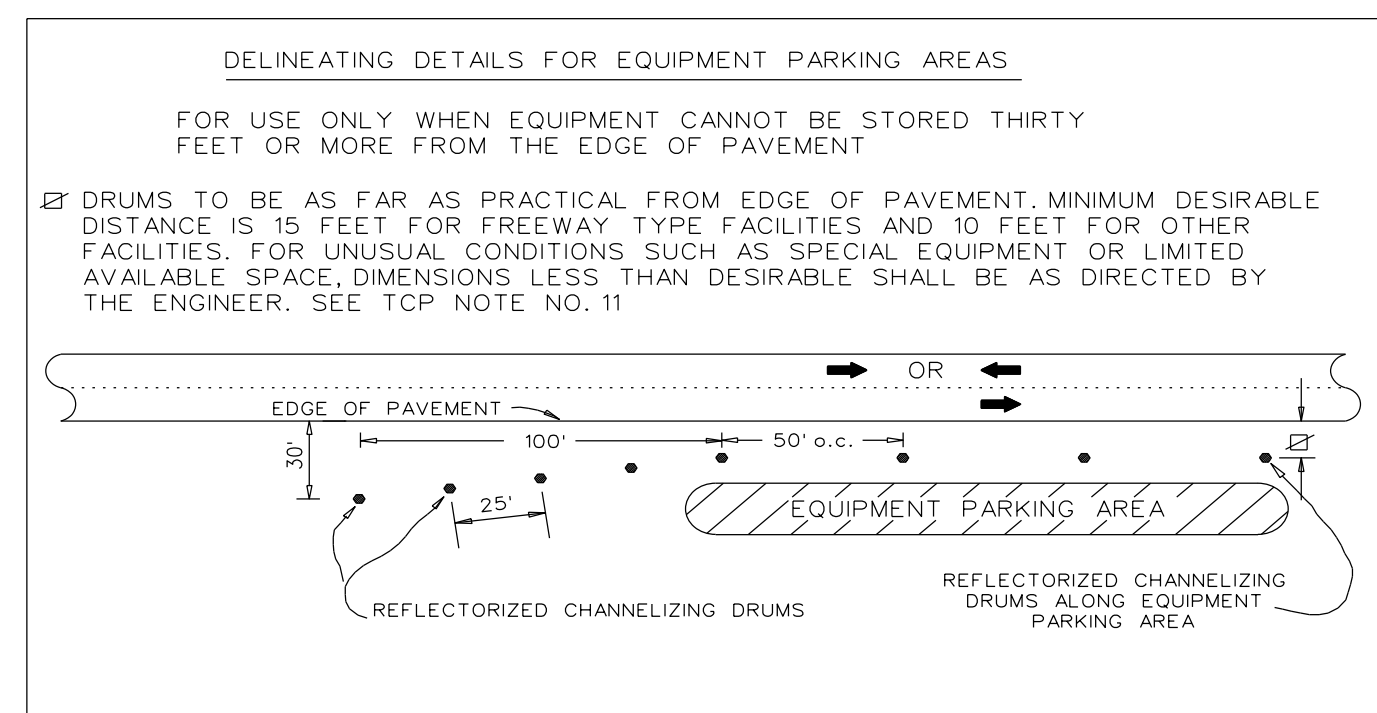
**TWO LANE HIGHWAY - ONE LANE CLOSED  
 FOR USE WITH PILOT CAR**

LEGEND	
◀	TEMPORARY MOUNTED SIGN
⊥	POST MOUNTED SIGN
▲	CONES
⊠	FLAGGER

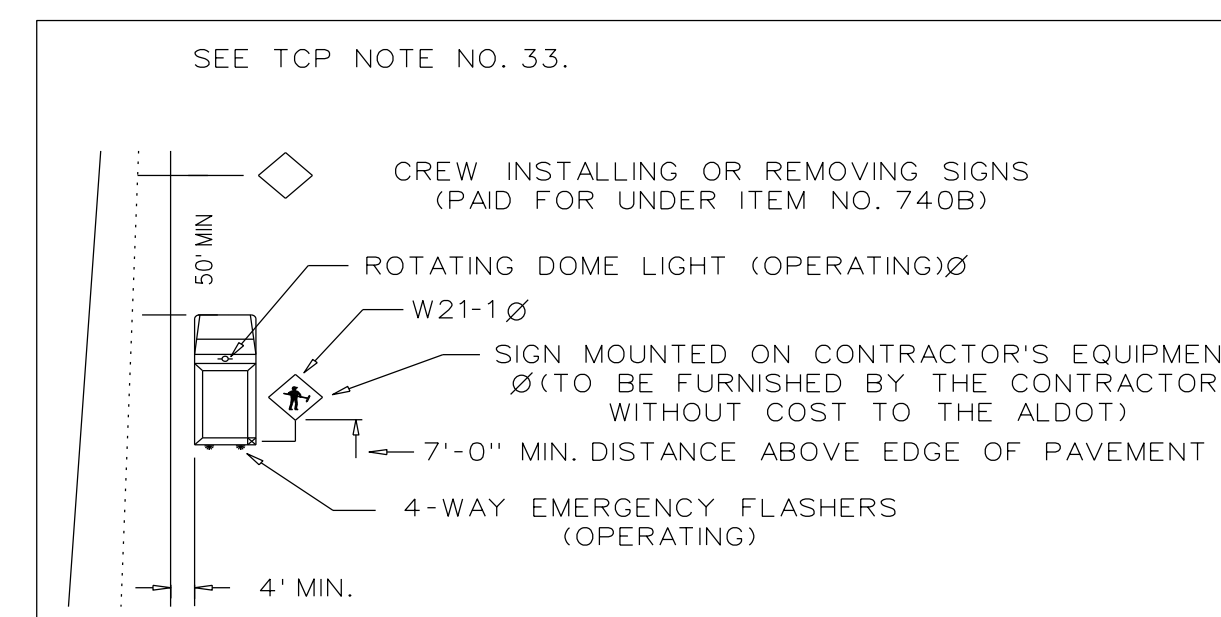


NOTE: "ROAD WORK AHEAD" MAY BE USED IN LIEU OF "ROAD WORK 500 FT" SIGN AS SHOWN. SEE TCP NOTE NO. 32.

DETAIL FOR PLACEMENT OF W20-1 SIGN AT INTERSECTING ROADS



DELINEATING DETAILS FOR EQUIPMENT PARKING AREAS



T.C.P. FOR INSTALLING OR REMOVING CONSTRUCTION SIGNS

REVISIONS	
DRAWN - 01/05/07	REVISED SIGNS BASED ON
REVISED NOTE - ADDED PAY PROVISIONS FOR W20-1(MIN) SIGN - 01/30/07	SIGN REVISIONS IN THE 2013 SPEC./STD. DRAWING BOOK 10/30/12
DELETED DETAILS FOR W20-1(MIN) SIGN - 11/27/07	CHANGED BUREAU NAME IN TITLE BLOCK - 10/6/17
REVISED NOTE NUMBER REFERENCES - 08/14/08	REVISED LANE CLOSURE DIMENSIONS 12/16/19
ADDED LEGEND - 07/16/09	ADDED R16-3 AND R16-3a SIGNS 4/5/21
ADDED PILOT CAR DETAIL 04/05/10	ADDED REFERENCE TO TCP NOTE 30 4/13/21
	ADDED R16-3b SIGN 11/15/21

ALABAMA DEPARTMENT OF TRANSPORTATION  
 LOCAL TRANSPORTATION BUREAU

TRAFFIC CONTROL PLAN  
 DETAILS FOR LANE CLOSURE  
 TWO LANE HIGHWAY  
 PILOT CAR AND/OR CONE APPLICATION  
 NOT TO SCALE