

3/8" Ø THREADED WELDED STUD (GALV.)
3 PER GRATE PANEL END AND 2 PER GRATE PANEL SIDE.
COORDINATE LOCATION WITH GRATE MANUFACTURER.

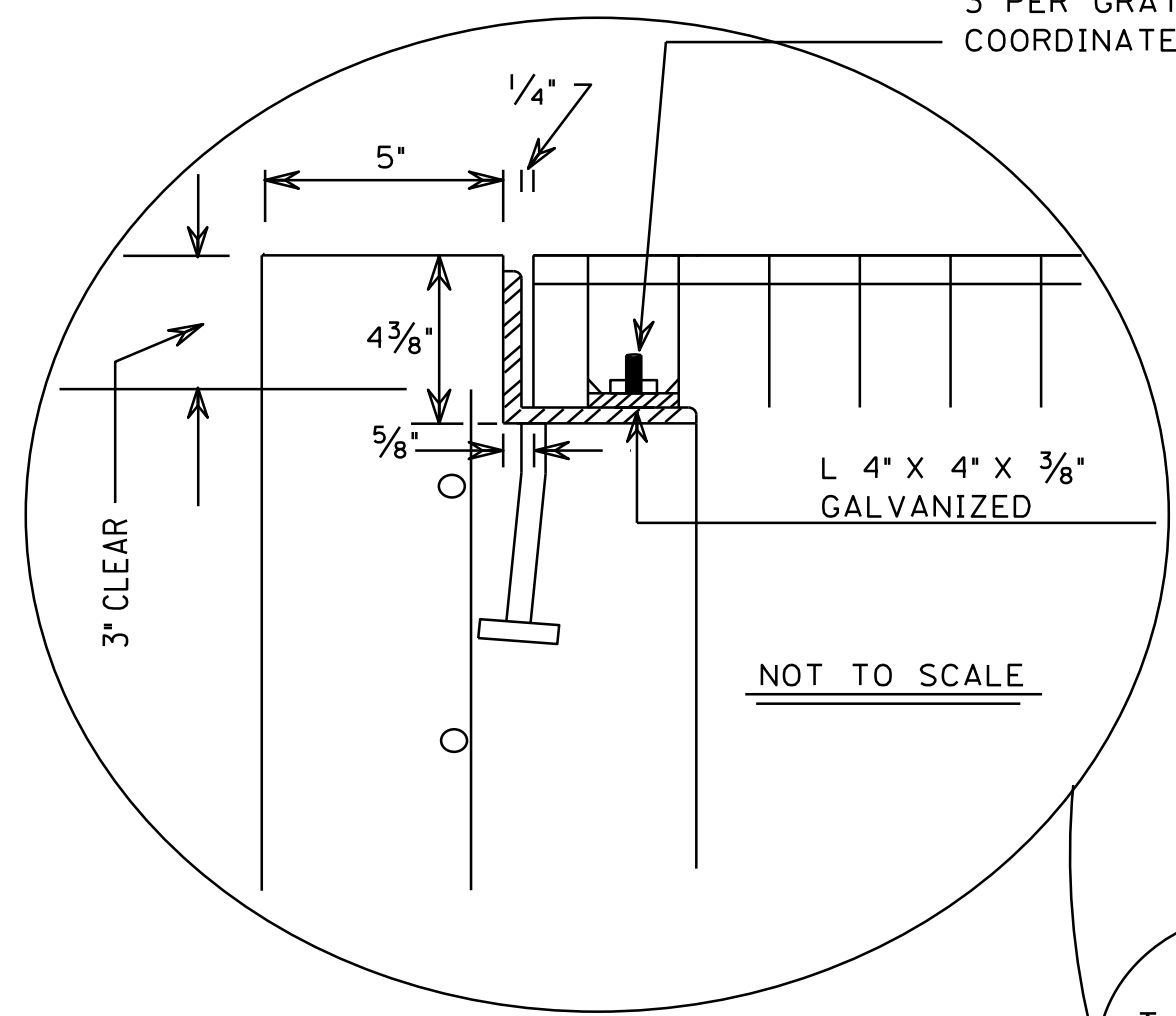
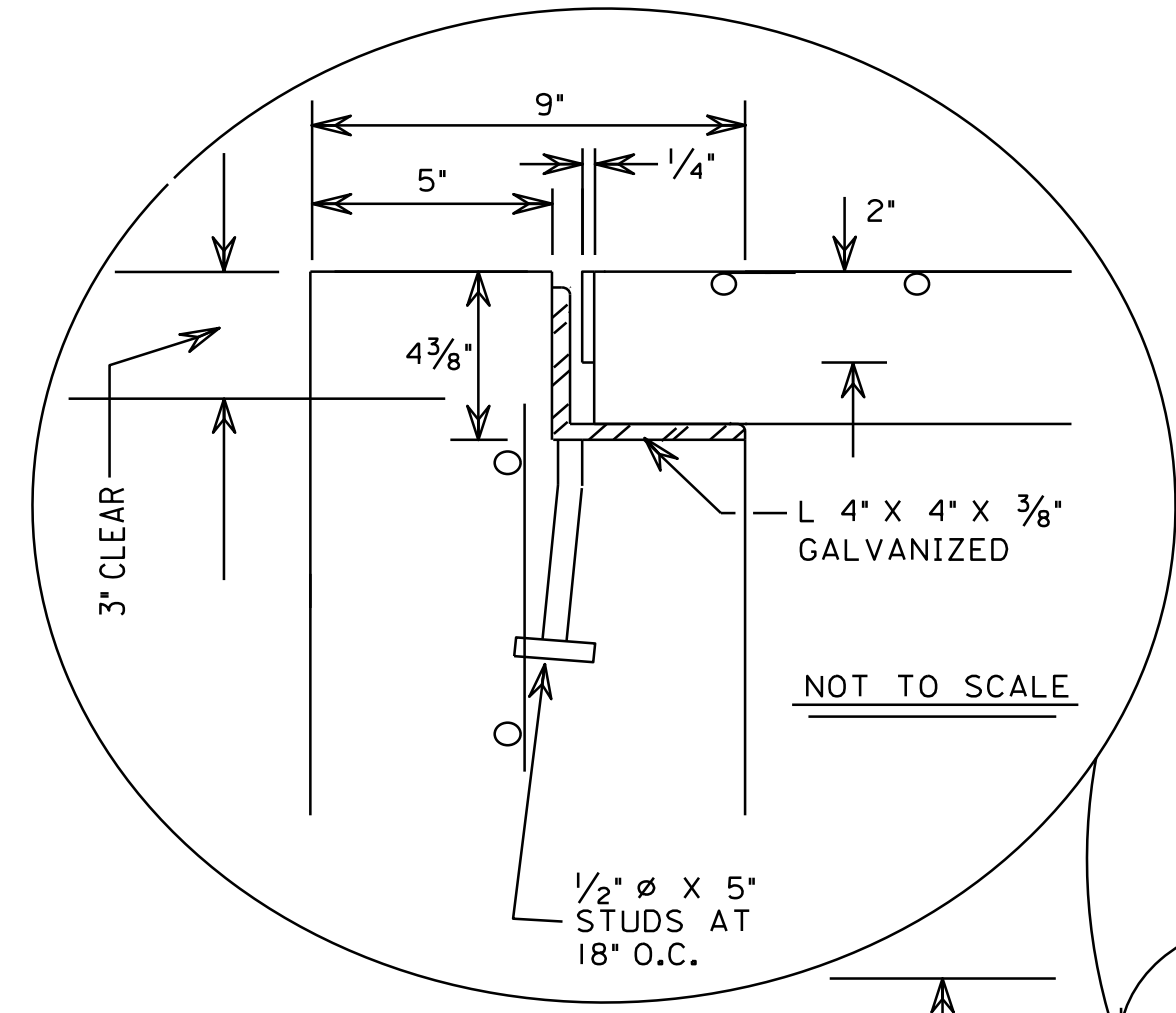


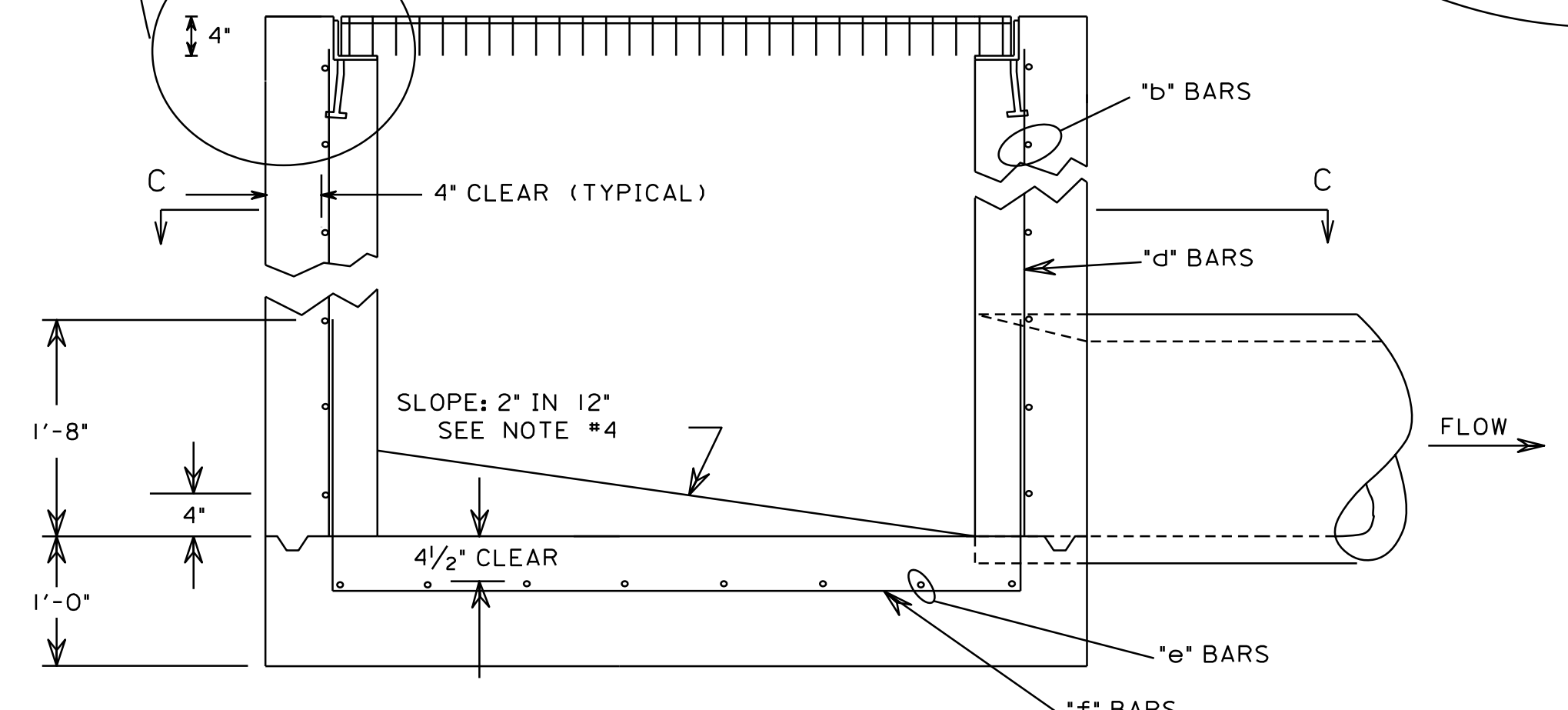
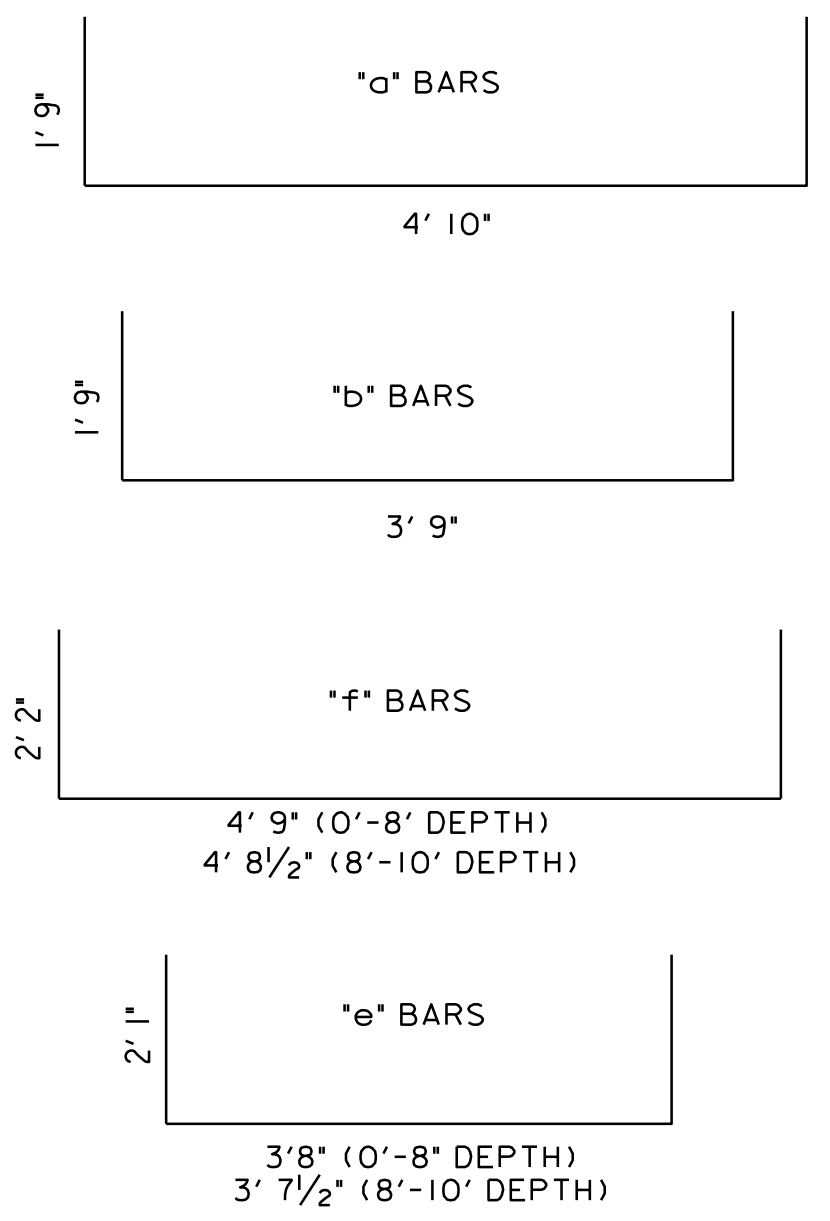
PLATE FASTENER (GALV.)
PLATE WELDED TO BEARING BARS
3 PER GRATE PANEL END
2 PER GRATE PANEL SIDE

NOT TO SCALE

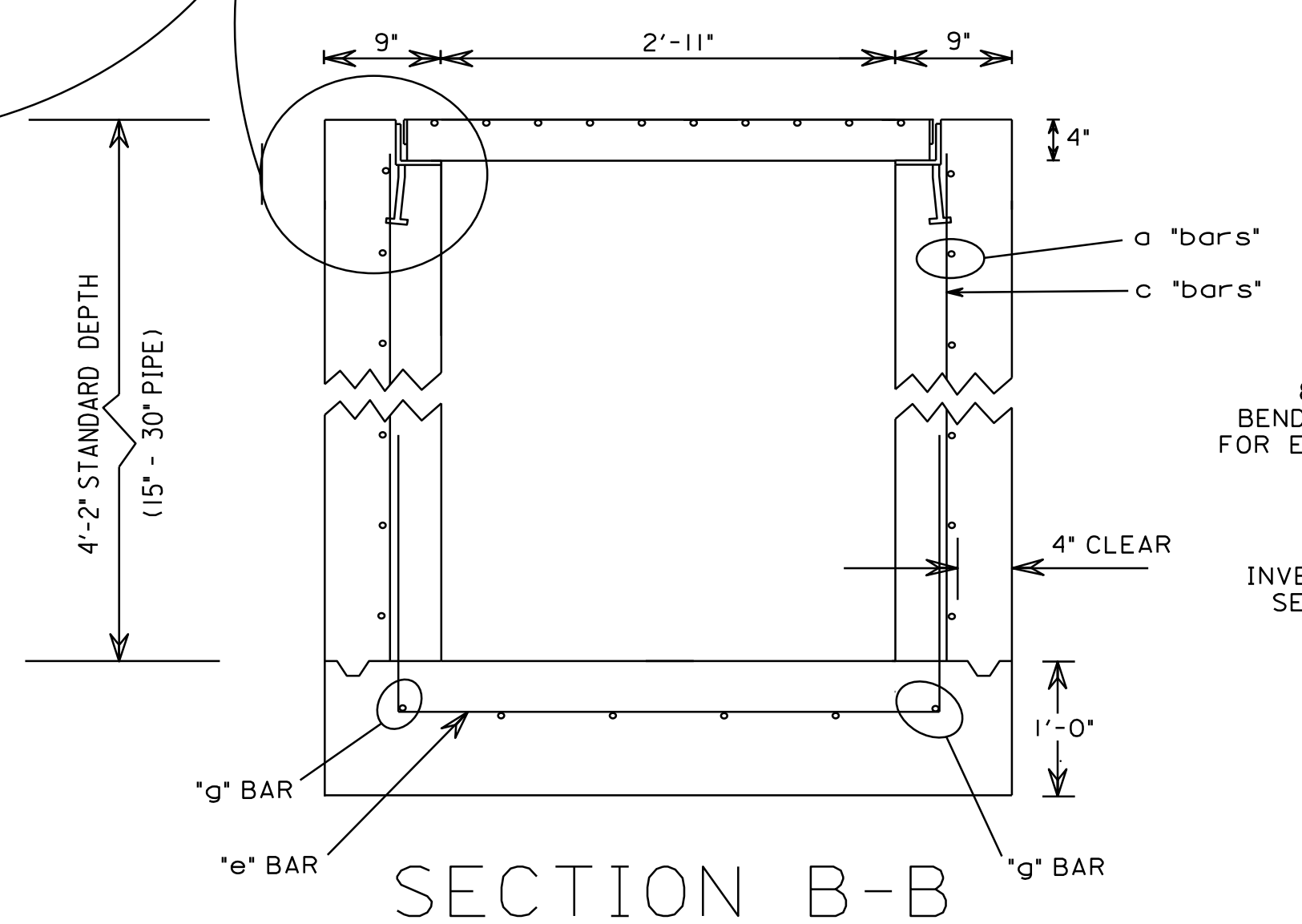


NOT TO SCALE

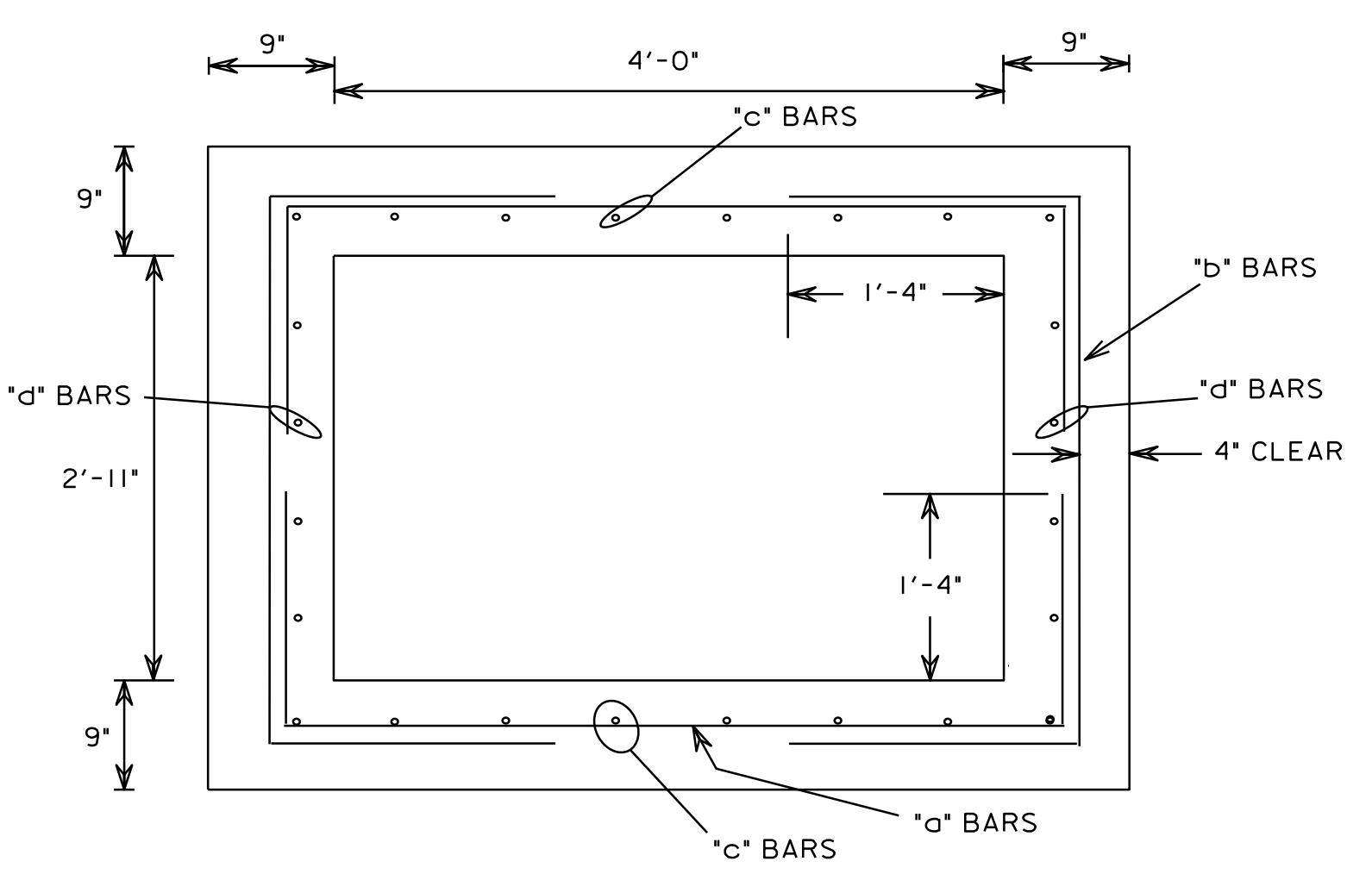
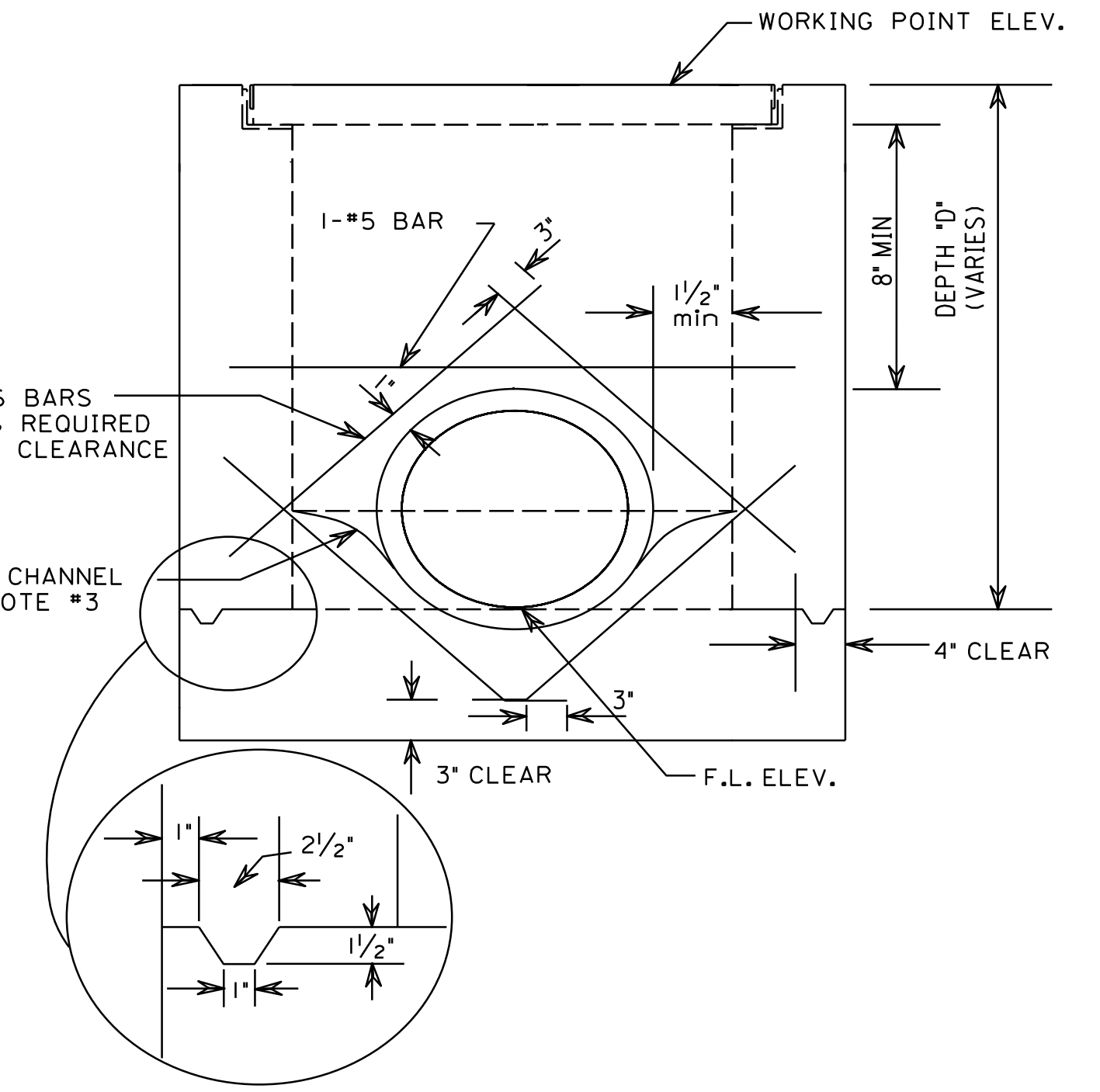
DEPTH "D"	a BARS + b BARS size spacing	c BARS STRAIGHT # size spacing	d BARS STRAIGHT # size spacing	e BARS # size spacing	f BARS # size spacing	g BARS STRAIGHT # size
0' - 8'	#4 @ 8"	16 #4 @ 8"	8 #4 @ 8.5"	8 #5 @ 8"	4 #5 @ 8.5"	2 #5
8' - 10'	#6 @ 8"	16 #6 @ 8"	8 #6 @ 8.5"	8 #5 @ 8"	4 #5 @ 8.5"	2 #5



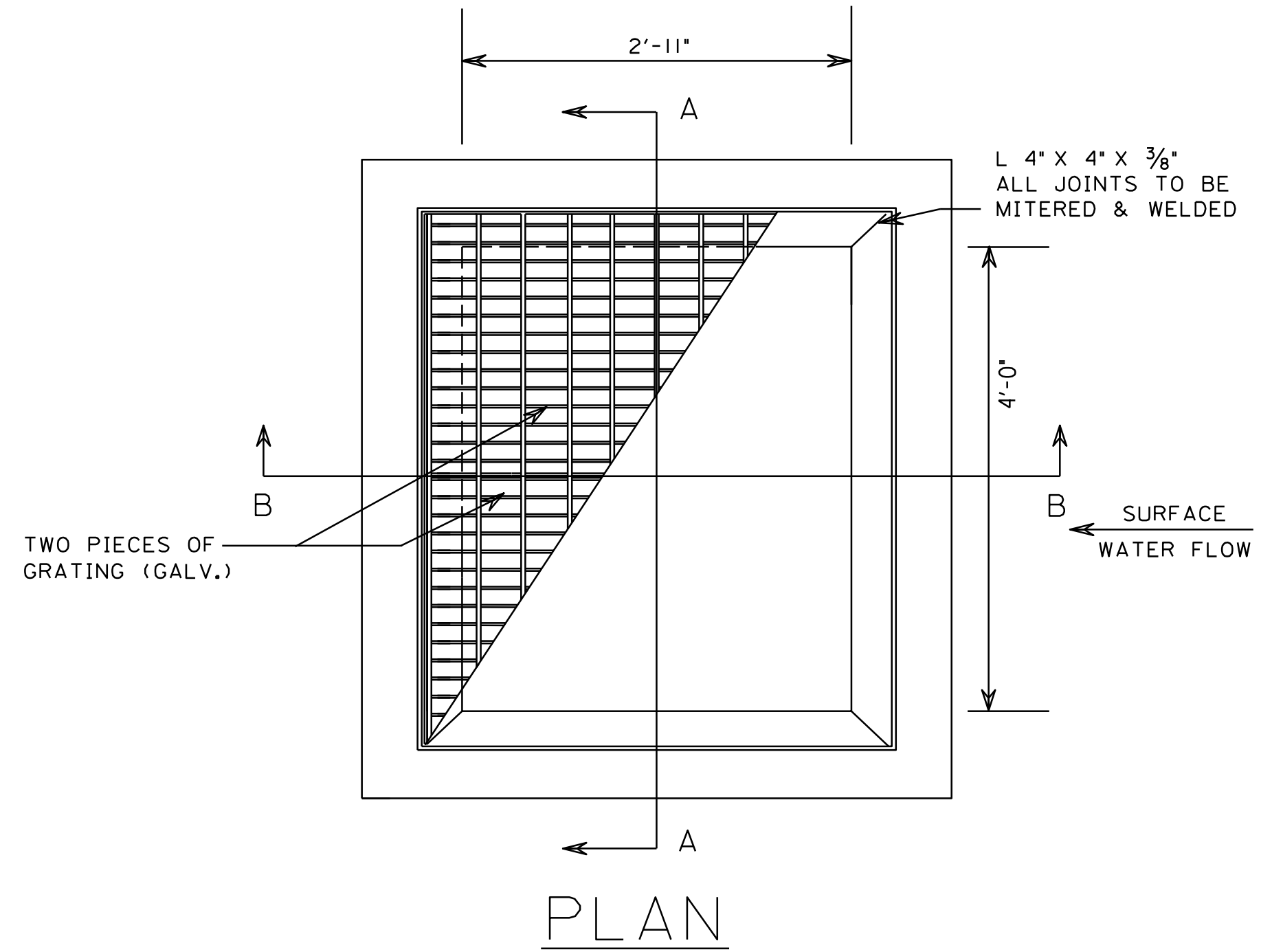
SECTION A-A



SECTION B-B



SECTION C-C



PLAN

GENERAL NOTES

1. GRATE SPECIFICATION
STEEL GRATING TO BE STYLE HW (HEAVY WELD) TYPE P18A AS MANUFACTURED BY IKG INDUSTRIES OR AN APPROVED EQUAL. THE GRATING MATERIAL SHALL CONFORM TO ASTM A36 STEEL SPECIFICATION FOR THE MAIN BEARING BARS, MAIN BARS TO BE 4" DEEP BY 1/4" THICK, SPACED AT 1 1/2" CENTERS. THE CROSS BARS SHALL BE WELDED AT EACH INTERSECTION OF THE MAIN BEARING BARS AND CROSS BARS USING 3/8" DIAMETER CROSS BARS, SPACED 4" ON CENTER. CROSS BARS SHALL BE FLUSH WITH THE TOP OF THE GRATING. GRATING SHALL SPAN 38" INCHES MAXIMUM SPAN AND SATISFY THE AASHTO LOADING FOR H-20/HS-20. THE GRATES, GRATE SEATS, NUTS, BOLTS, AND MISCELLANEOUS METAL HARDWARE SHALL BE HOT-DIPPED GALVANIZED AFTER FABRICATION. GRATE AND SEAT SHALL BE A SUBSIDIARY OBLIGATION OF ITEM NUMBER 621-C INLET, TYPE "PD".
2. ALL SPLICE LENGTHS 36 BAR DIAMETERS MINIMUM.
3. INVERT CHANNELS ARE REQUIRED IN BASE WHERE PIPE FLOW PASSES THROUGH THE BOX. CHANNELS MAYBE FORMED IN CONCRETE OR CONSTRUCTED LATER USING A CEMENT CONCRETE MORTAR. CHANGES IN DIRECTION OF FLOW SHALL HAVE A TRUE CURVE OF AS LARGE A RADIUS AS SIZE WILL PERMIT AND BE FINISHED UP TO CENTER OF PIPE.
4. WHERE PIPE BEGINS AT PIPE BOX, SLOPE BOTTOM 2" PER 12" TOWARDS PIPE. BOTTOM MAYBE FORMED IN CONCRETE OR CONSTRUCTED LATER USING A CEMENT CONCRETE MORTAR.
5. THIS INLET IS NOT FOR USE ON PAVEMENT OR WHERE IT CAN BE SUBJECT TO TRAFFIC LOADS.
6. WHERE PIPE SHELL THICKNESS INTERFERE WITH BASE SLAB REINFORCING AND BEND REINFORCING DOWN UNDER PIPE.
--SPECIFICATIONS--

CURRENT ALABAMA DEPARTMENT OF TRANSPORTATION

<p>THIS DRAWING REPRESENTS DESIGNS PREPARED FOR USE BY THE ALABAMA DEPARTMENT OF TRANSPORTATION AND IS NOT TO BE COPIED, REPRODUCED, ALTERED, OR USED BY ANYONE, OR ANY ORGANIZATION, WITHOUT THE EXPRESSED WRITTEN CONSENT OF THE ALABAMA DEPARTMENT OF TRANSPORTATION REPRESENTATIVE AUTHORIZED TO APPROVE THIS USE. ANYONE MAKING UNAUTHORIZED USE OF THIS DRAWING MAY BE PROSECUTED TO THE FULLEST EXTENT OF THE LAW.</p>	
<p>REVISIONS 1. Updates completed on 08-11-15 by D.R. and J.F.T.</p>	<p>ALABAMA DEPARTMENT OF TRANSPORTATION 1409 COLISEUM BOULEVARD MONTGOMERY, AL 36130-3050</p> <p>DESIGN BUREAU SPECIAL DRAWING</p> <p>DETAIL OF BICYCLE SAFE DITCH INLET TYPE - PD</p>
<p>Bureau Std Engr : L.V.S. DRAWN BY: _____ DATE DRAWN: _____</p>	<p>SPECIAL DRAWING NO SPECIAL PROJECT DETAIL</p> <p>INDEX NO</p>

NOT TO SCALE