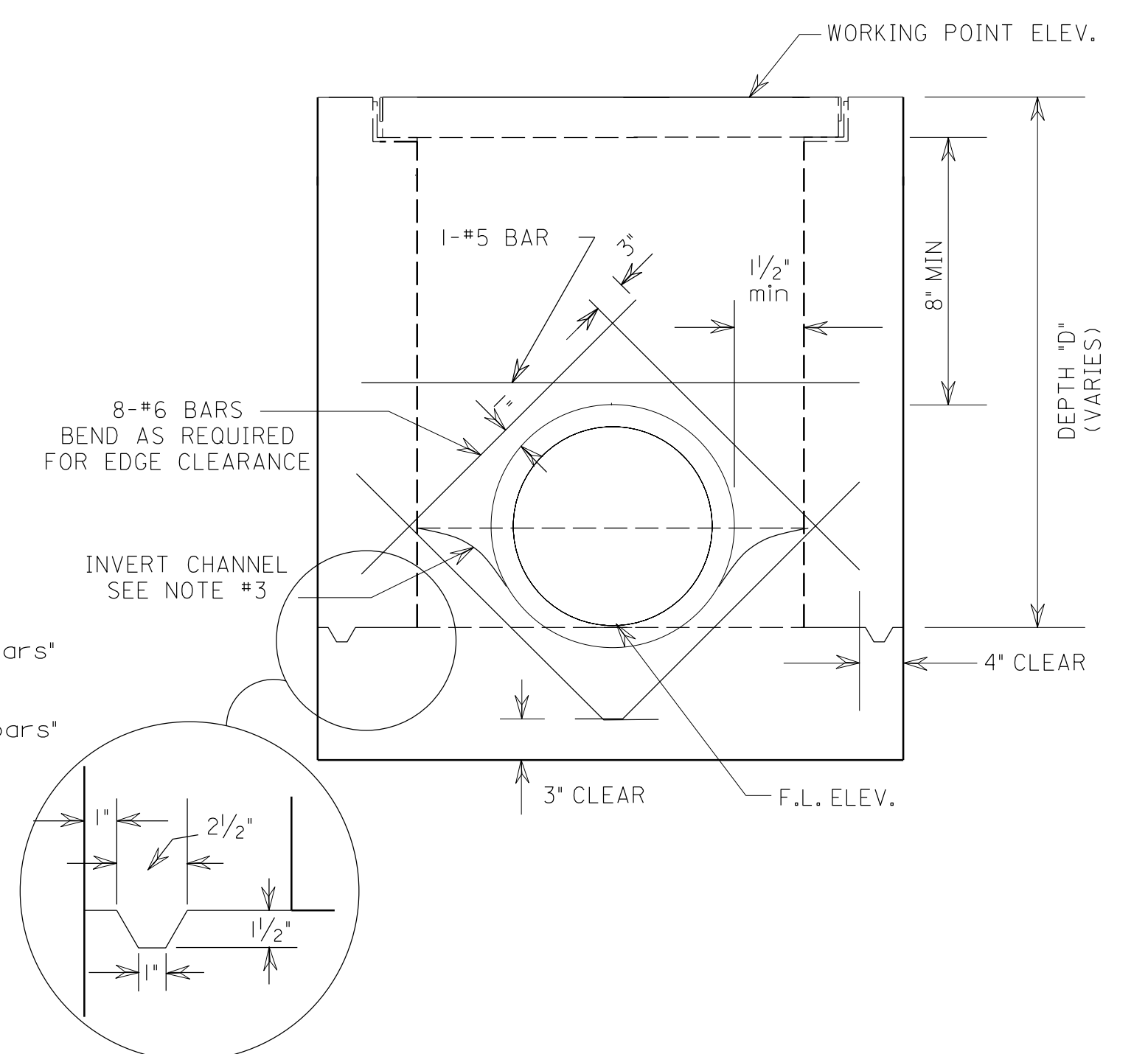
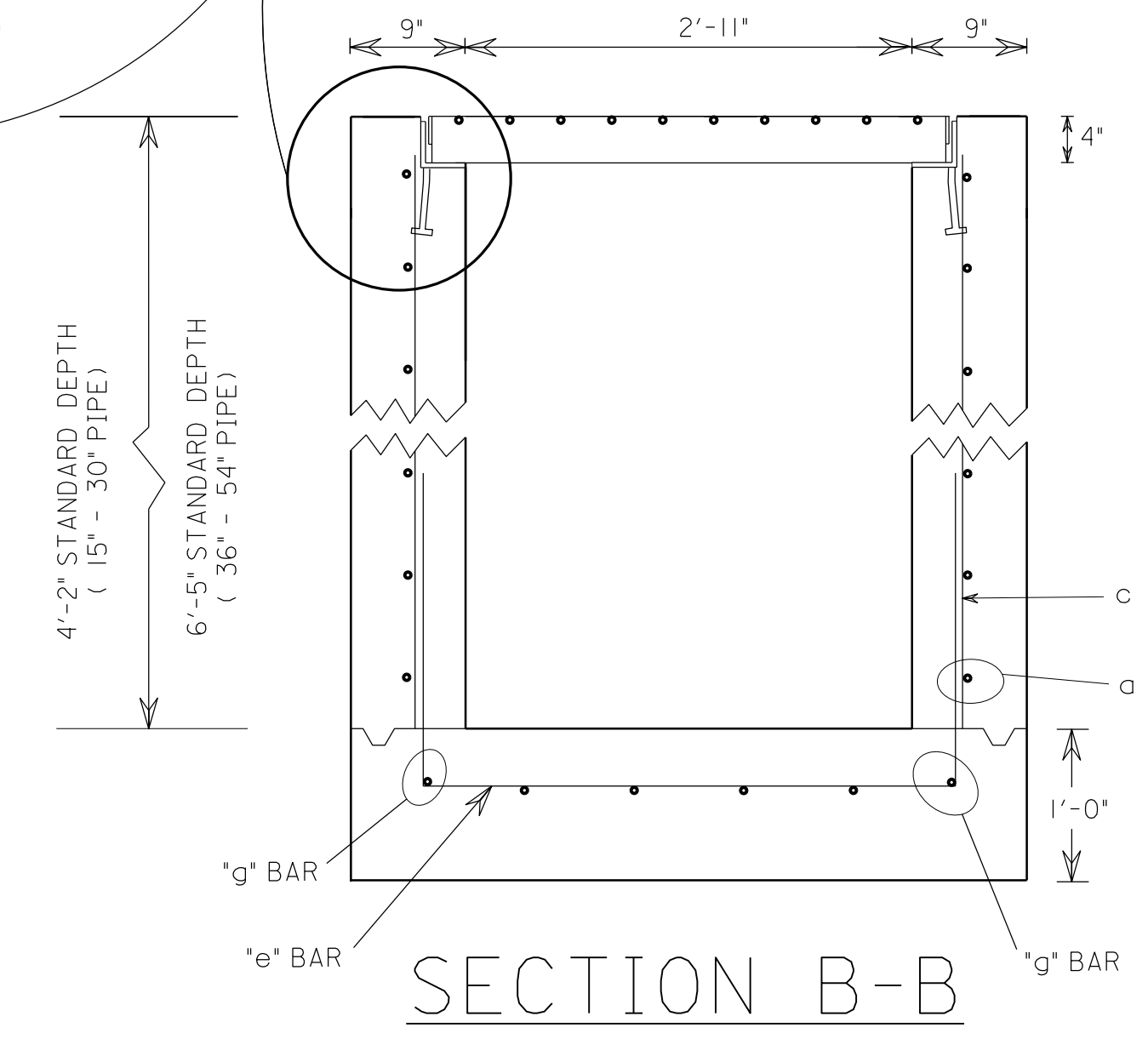
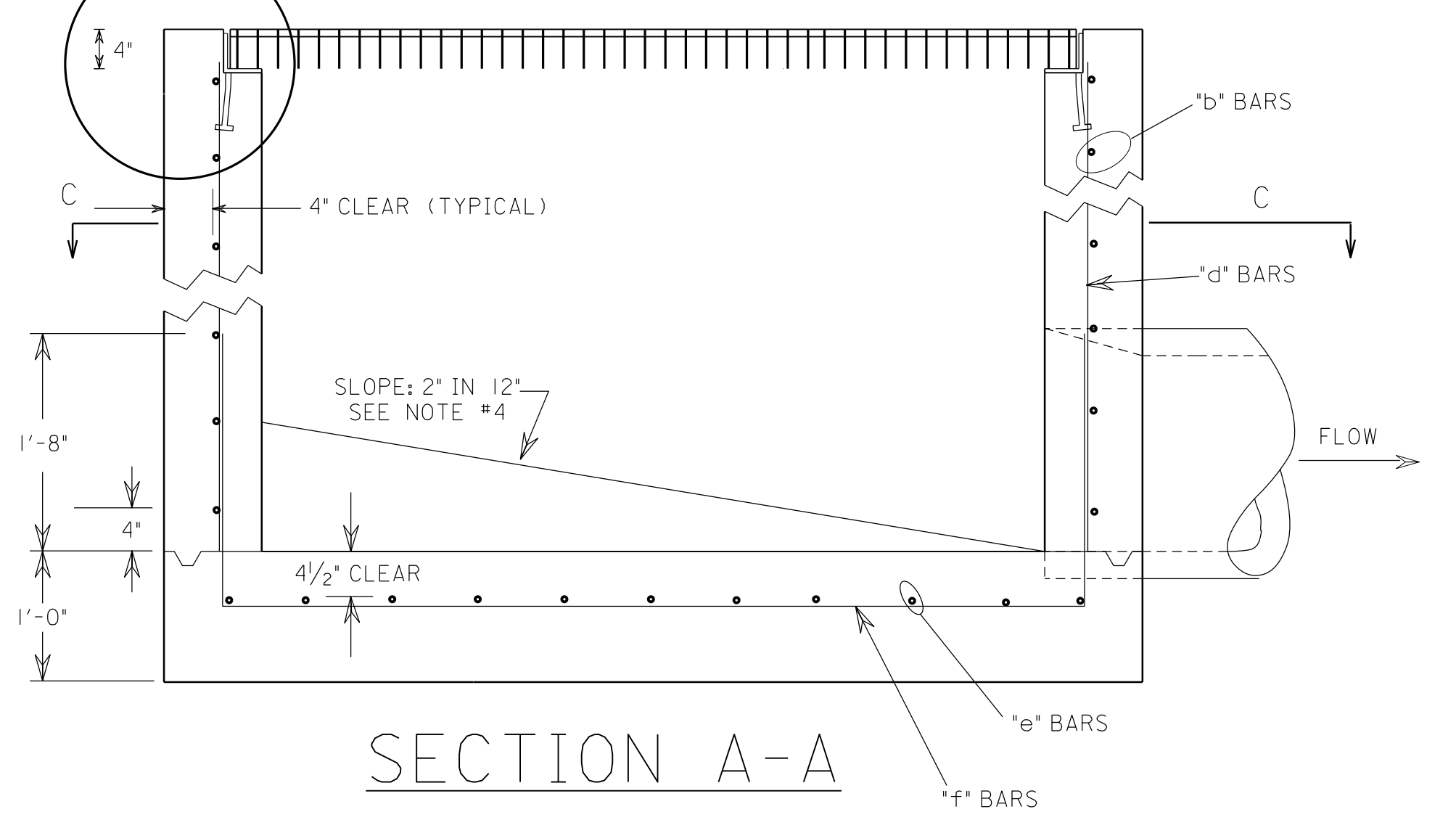
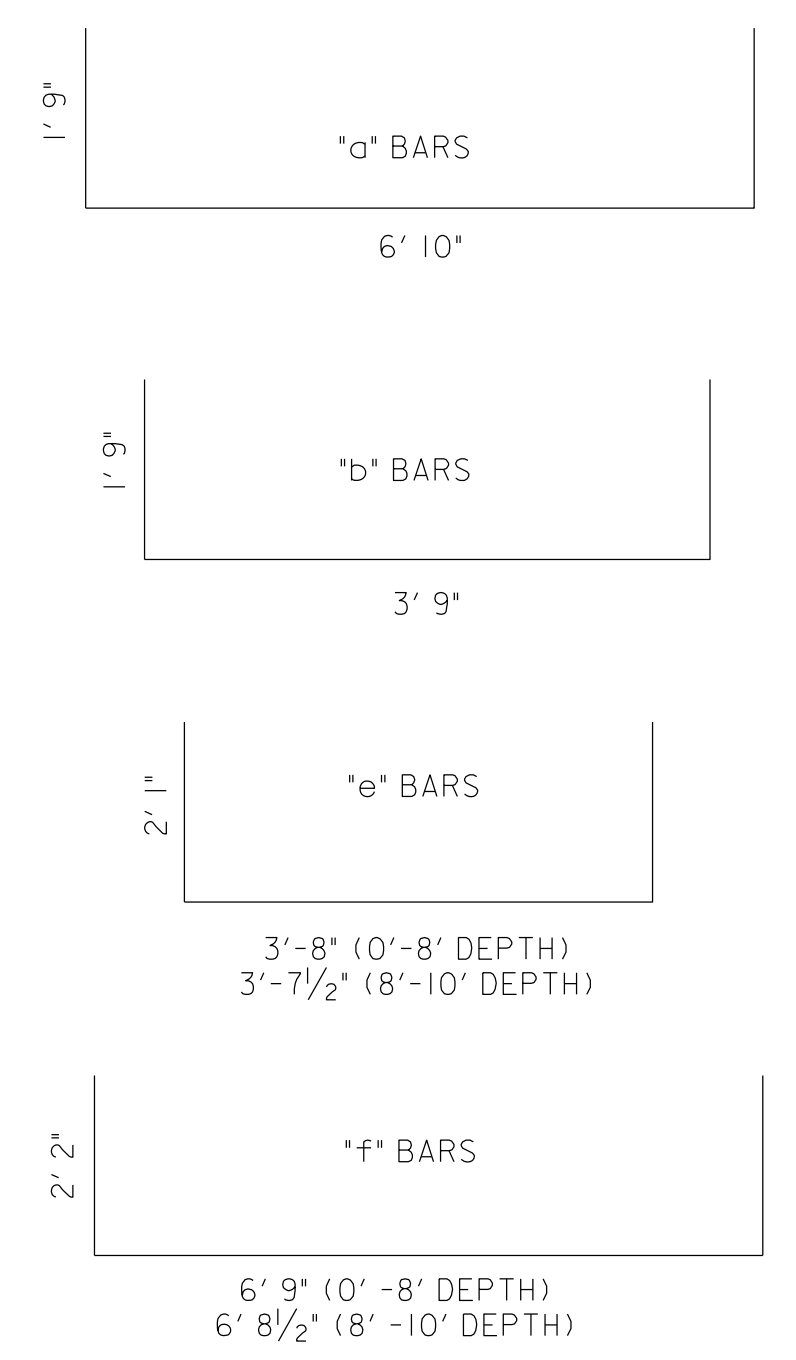


DEPTH 'D'	a BARS + b BARS size spacing	c BARS STRAIGHT size spacing	d BARS STRAIGHT size spacing	e BARS size spacing	f BARS size spacing	g BARS STRAIGHT size
0 - 8'	#4 @ 8"	22 #4 @ 8"	8 #4 @ 8.5"	11 #5 @ 8"	4 #5 @ 8.5"	2 #5
8 - 10'	#6 @ 8"	22 #6 @ 8"	8 #6 @ 8.5"	11 #5 @ 8"	4 #5 @ 8.5"	2 #5

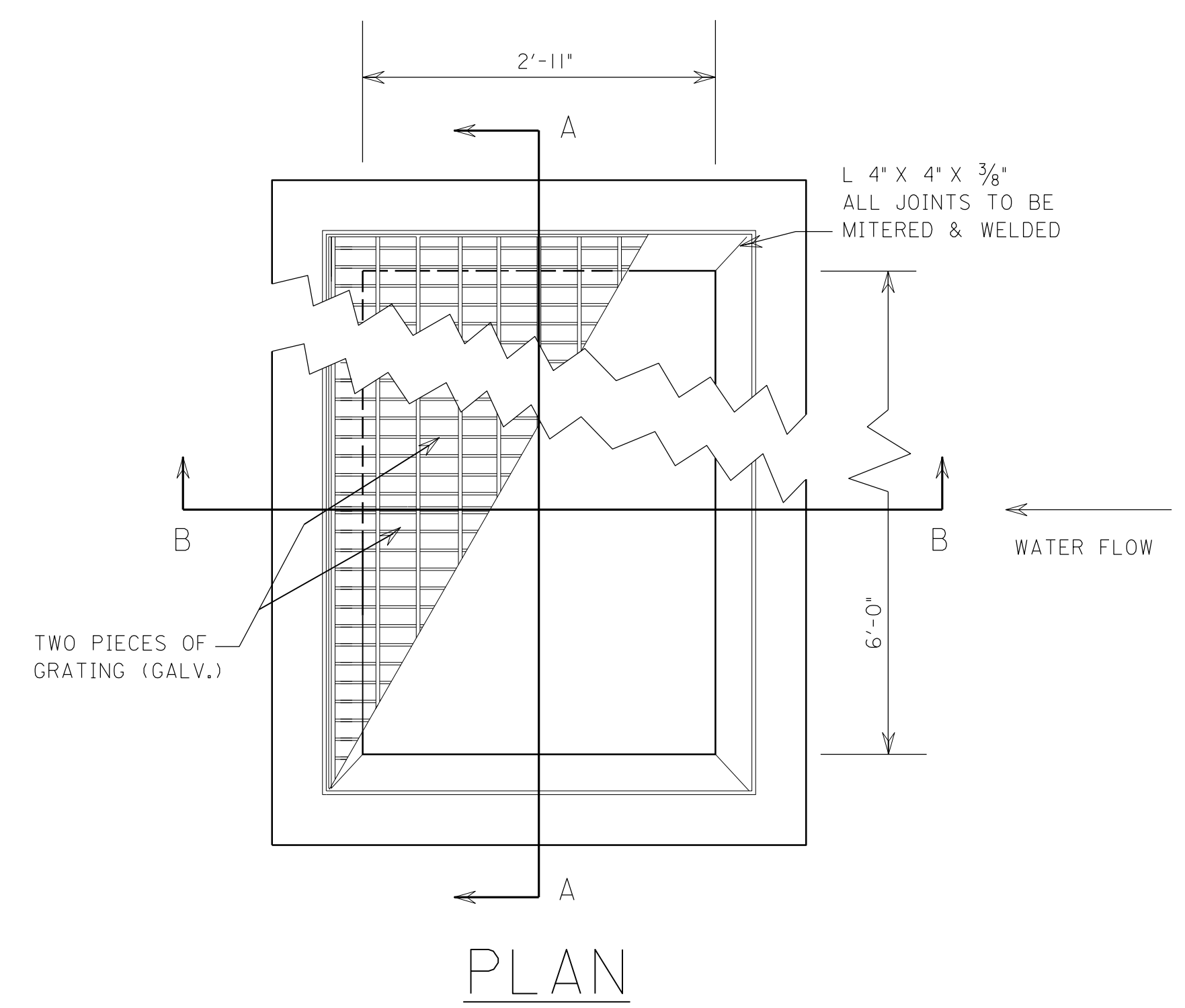
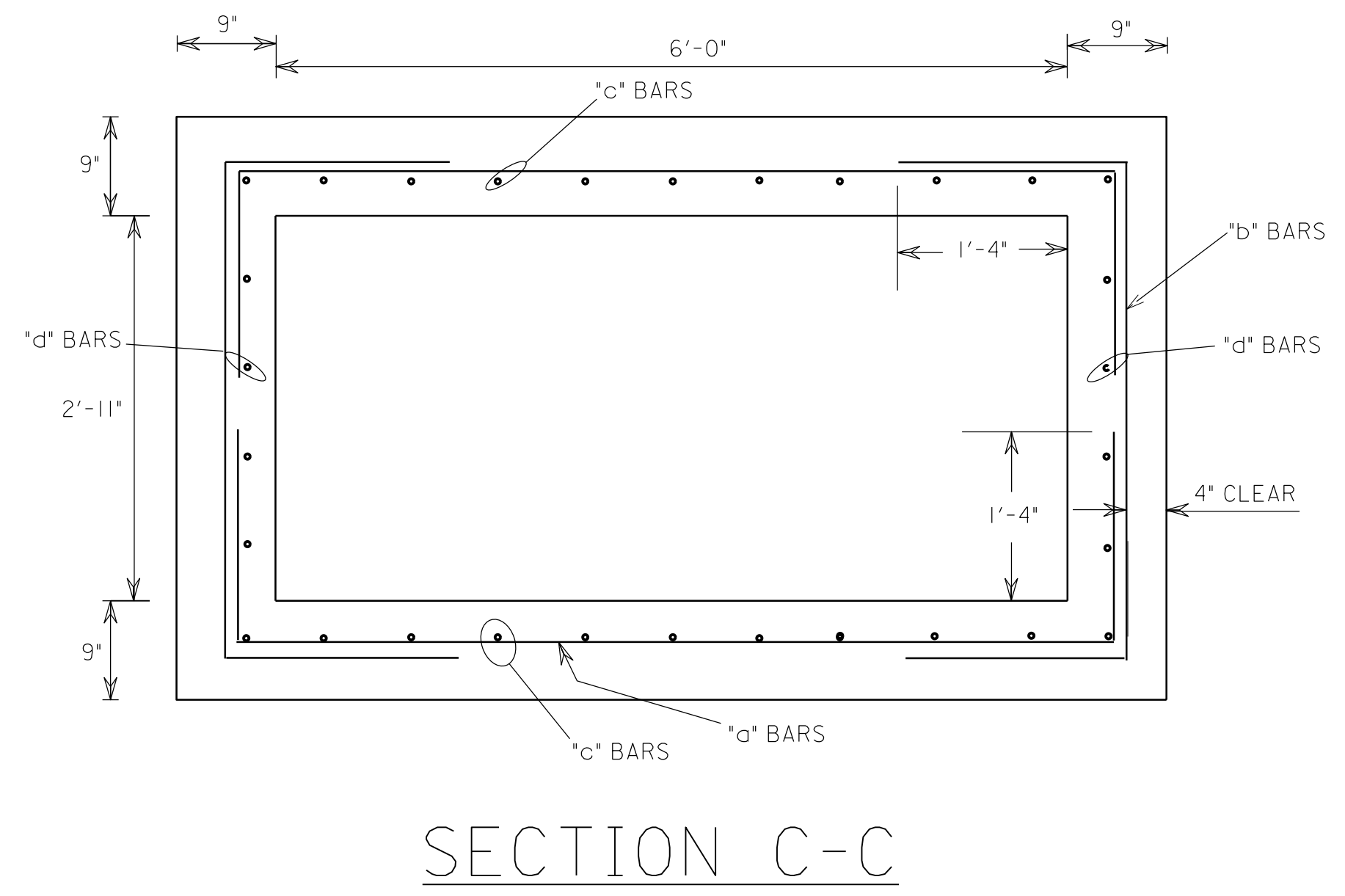


GENERAL NOTES

- GRATE SPECIFICATION
STEEL GRATING TO BE STYLE HW (HEAVY WELD) TYPE P18A AS MANUFACTURED BY IKG INDUSTRIES OR APPROVED EQUAL. THE GRATING MATERIAL SHALL CONFORM TO ASTM A36 STEEL SPECIFICATION FOR THE MAIN (BEARING) BARS. MAIN BARS TO BE 4 INCHES DEEP BY 1/4 INCHES THICK, SPACED AT 1 7/8 INCH CENTERS. THE CROSS BARS SHALL BE WELDED AT EACH INTERSECTION OF THE MAIN BEARING BARS AND CROSS BARS USING A 3/8 DIAMETER CROSS BAR, SPACED 4 INCHES ON CENTER. CROSS BARS SHALL BE FLUSH WITH THE TOP OF THE GRATING. THE GRATING SHALL SPAN 38 INCHES MAXIMUM SPAN AND SATISFY THE AASHTO LOADINGS FOR H-20/H5-20. THE GRATES, GRATE SEATS, NUTS, BOLTS, AND MISCELLANEOUS METAL HARDWARE SHALL BE HOT-DIPPED GALVANIZED AFTER FABRICATION. GRATE AND SEAT SHALL BE A SUBSIDIARY OBLIGATION OF ITEM NUMBER 621-C INLET, TYPE "PD-6".
- ALL SPLICES 36 BAR DIAMETER.
- INVERT CHANNELS ARE REQUIRED IN BASE WHERE PIPE FLOW PASSES THROUGH THE BOX. CHANNELS MAYBE FORMED IN CONCRETE OR CONSTRUCTED LATER USING A CEMENT CONCRETE MORTAR. CHANGES IN DIRECTION OF FLOW SHALL HAVE A TRUE CURVE OF AS LARGE A RADIUS AS SIZE WILL PERMIT AND BE FINISHED UP TO CENTER OF PIPE.
- WHERE PIPE BEGINS AT BOX, SLOPE 2" PER 12" TOWARDS PIPE MAYBE FORMED IN CONCRETE OR CONSTRUCTED LATER USING A CEMENT CONCRETE MORTAR.
- THIS INLET IS NOT FOR USE ON PAVEMENT OR WHERE IT CAN BE SUBJECT TO TRAFFIC LOADS.
- WHERE PIPE SHELL THICKNESS INTERFERES WITH BASE SLAB REINFORCING, BEND REINFORCING DOWN UNDER PIPE.

--SPECIFICATIONS--
CURRENT ALABAMA HIGHWAY DEPARTMENT

THIS DRAWING REPRESENTS DESIGNS PREPARED FOR USE BY THE ALABAMA DEPARTMENT OF TRANSPORTATION AND IS NOT TO BE COPIED, REPRODUCED, ALTERED, OR USED BY ANYONE, OR ANY ORGANIZATION, WITHOUT THE EXPRESSED WRITTEN CONSENT OF THE ALABAMA DEPARTMENT OF TRANSPORTATION REPRESENTATIVE AUTHORIZED TO APPROVE THIS USE. ANYONE MAKING UNAUTHORIZED USE OF THIS DRAWING MAY BE PROSECUTED TO THE FULLEST EXTENT OF THE LAW.



REVISIONS	<p>ALABAMA DEPARTMENT OF TRANSPORTATION 1409 COLISEUM BOULEVARD MONTGOMERY, AL 36130-3050</p>	<p>DESIGN BUREAU SPECIAL DRAWING</p> <p>DETAIL OF BICYCLE SAFE DITCH INLET TYPE "PD-6"</p>	INDEX NO.
<p>DRAWN BY: _____</p> <p>DATE DRAWN: _____</p>			

NOT TO SCALE