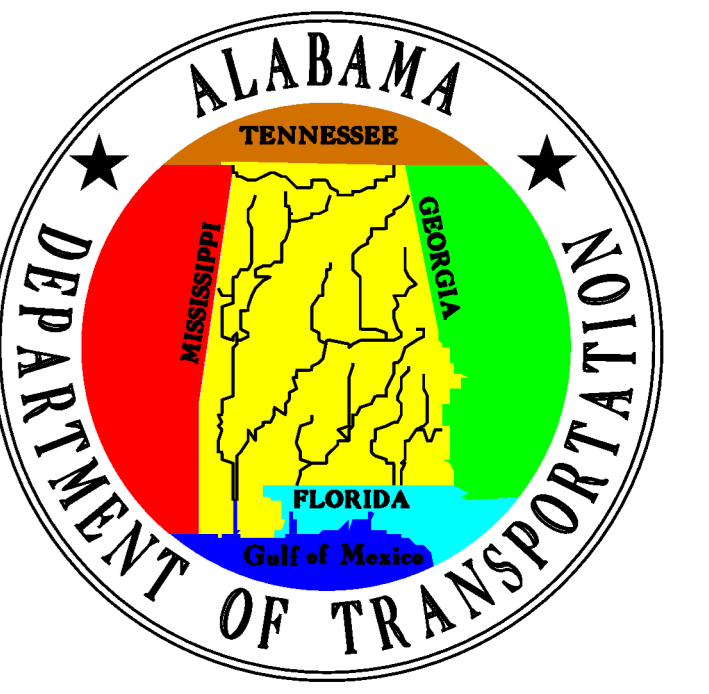


ALABAMA DEPARTMENT OF TRANSPORTATION

A PRELIMINARY CONCEPTUAL DESIGN


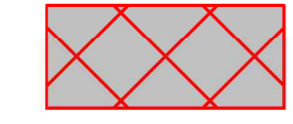



INTERSECTION MODIFICATIONS AT US-431 & CR-250 IN LEE COUNTY



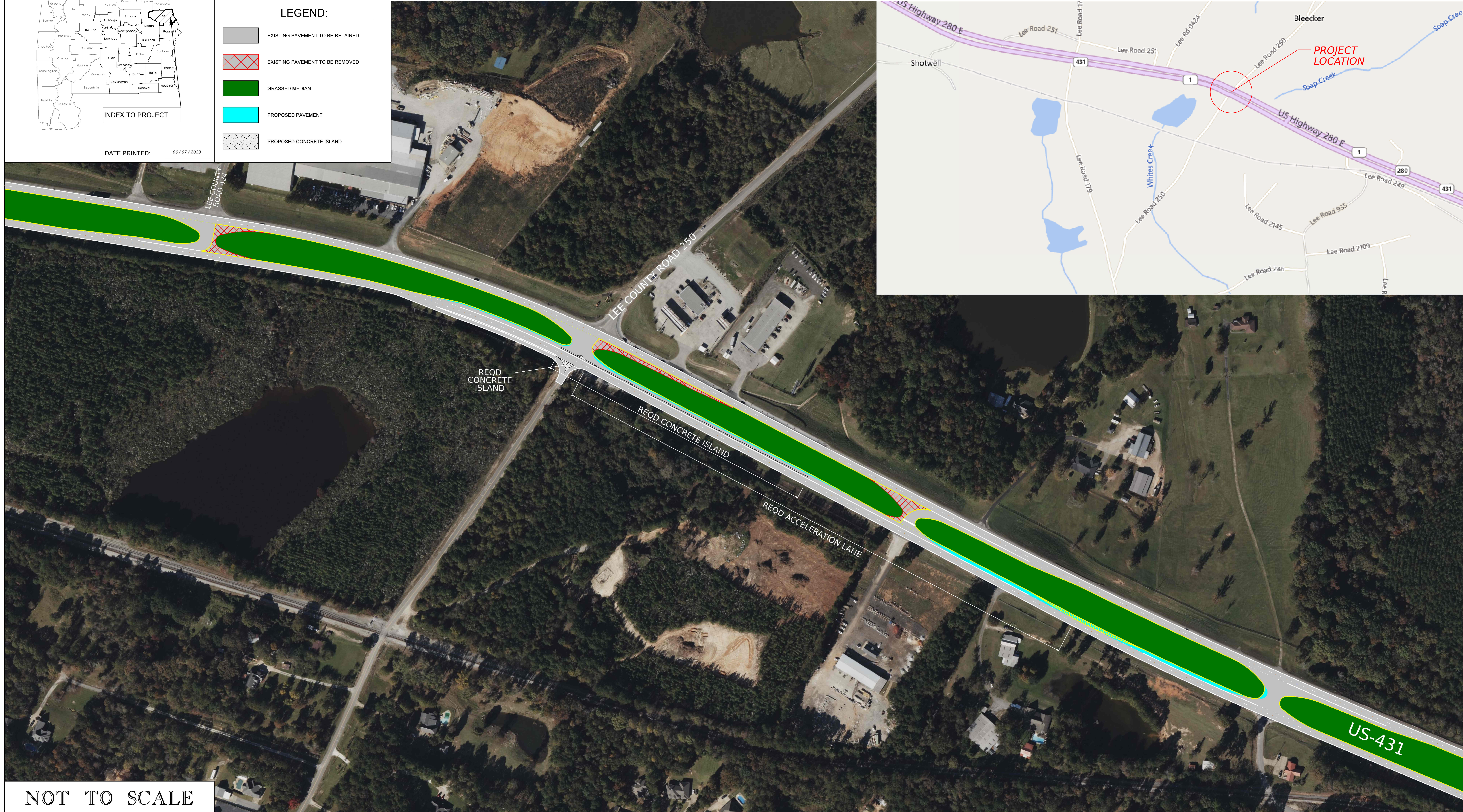
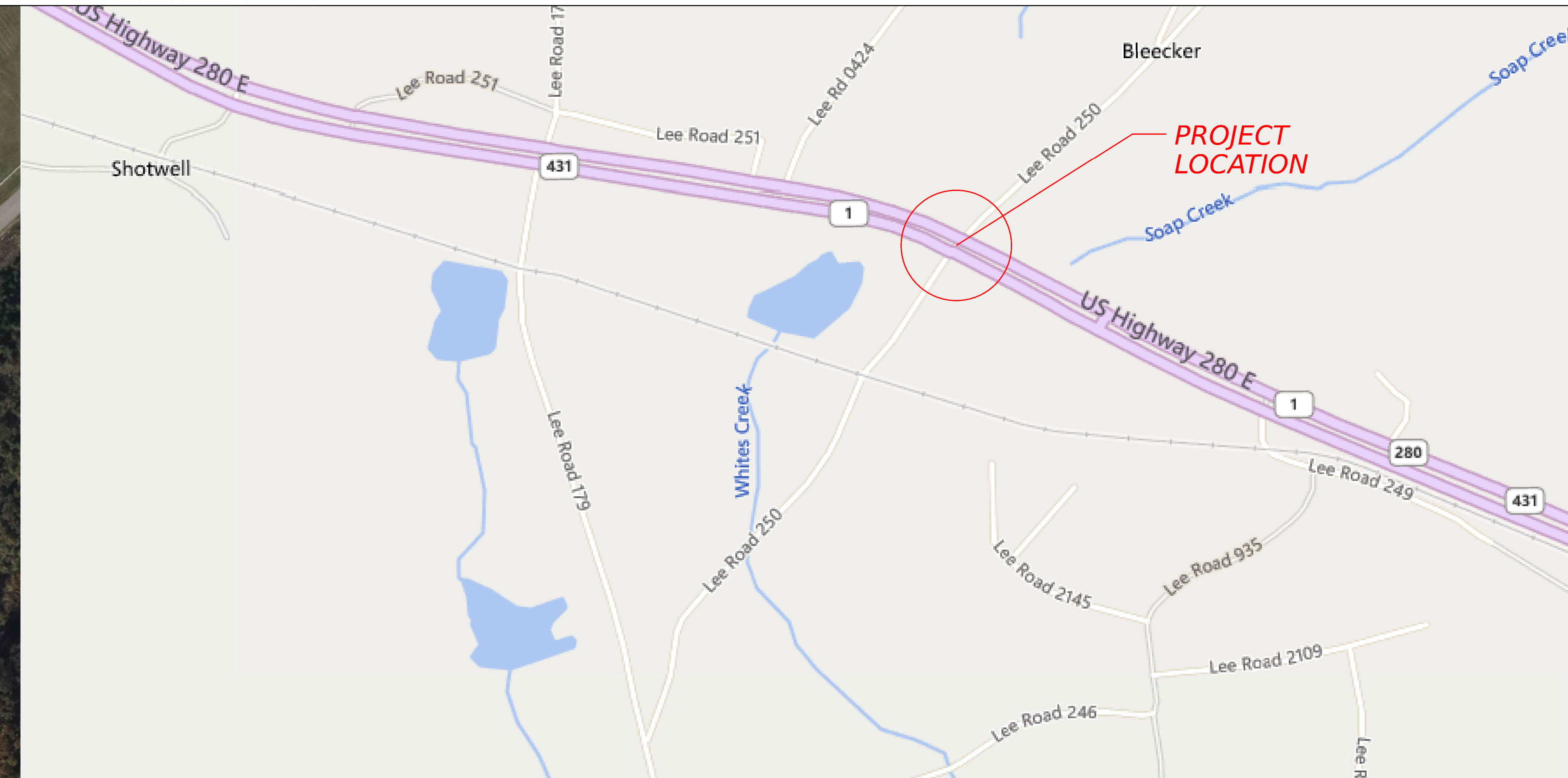
INDEX TO PROJECT

DATE PRINTED: 06 / 07 / 2023

LEGEND:

-  EXISTING PAVEMENT TO BE RETAINED
-  EXISTING PAVEMENT TO BE REMOVED
-  GRASSED MEDIAN
-  PROPOSED PAVEMENT
-  PROPOSED CONCRETE ISLAND

DISCLAIMER: THE FOLLOWING DESIGN IS A PRELIMINARY CONCEPT FOR THE SOUTHEAST REGION AND IS NOT INTENDED FOR CONSTRUCTION PURPOSES.



NOT TO SCALE