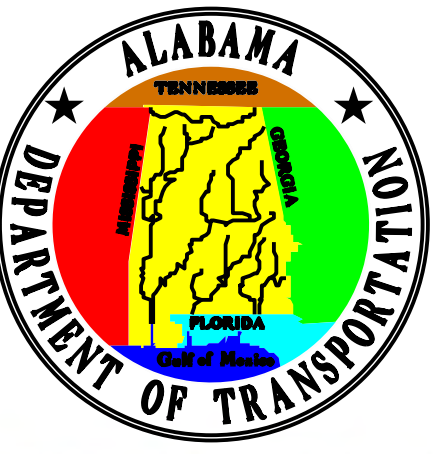
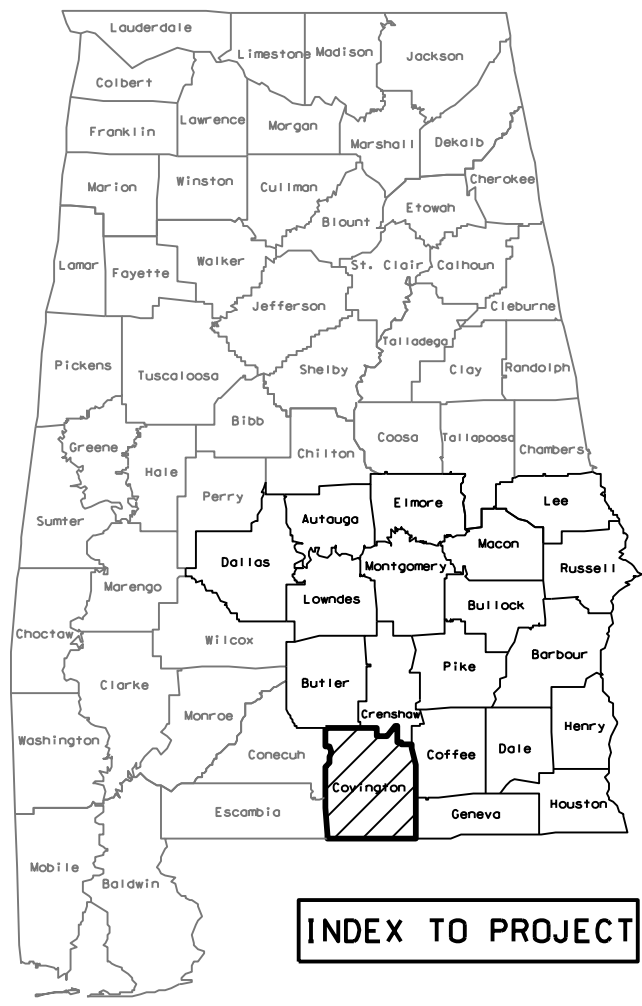


ALABAMA DEPARTMENT OF TRANSPORTATION
A PRELIMINARY CONCEPTUAL DESIGN



BRIDGE REPLACEMENT ON SR-55 OVER FIVE RUNS CREEK





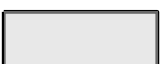
DISCLAIMER: THE FOLLOWING DESIGN IS A PRELIMINARY CONCEPT FOR THE SOUTHEAST REGION AND IS NOT INTENDED FOR CONSTRUCTION PURPOSES.

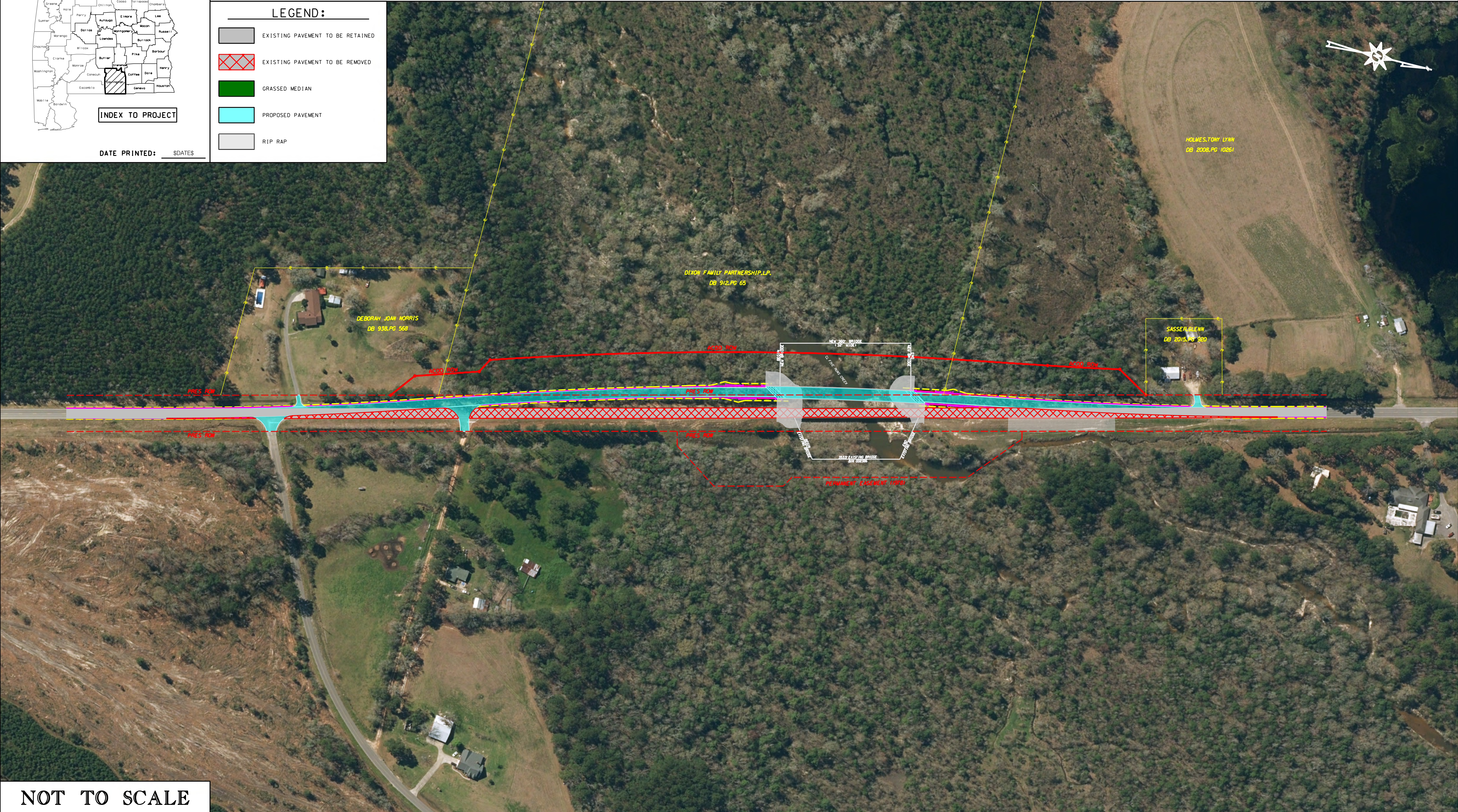


INDEX TO PROJECT

DATE PRINTED: SDATES

LEGEND:

-  EXISTING PAVEMENT TO BE RETAINED
-  EXISTING PAVEMENT TO BE REMOVED
-  GRASSED MEDIAN
-  PROPOSED PAVEMENT
-  RIP RAP



HOLMES, TONY LYNN
DB 2008, PG 10261

DIXON FAMILY PARTNERSHIP, L.P.
DB 912, PG 63

DEBORAH JOAN NORRIS
DB 938, PG 568

SASSER, GLENN
DB 2015, PG 920



NOT TO SCALE