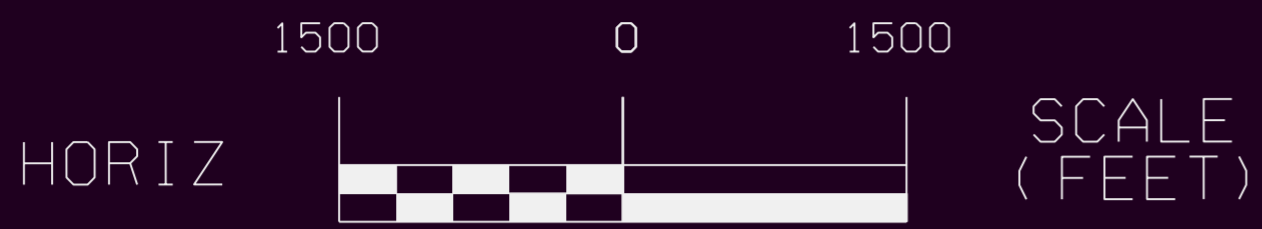
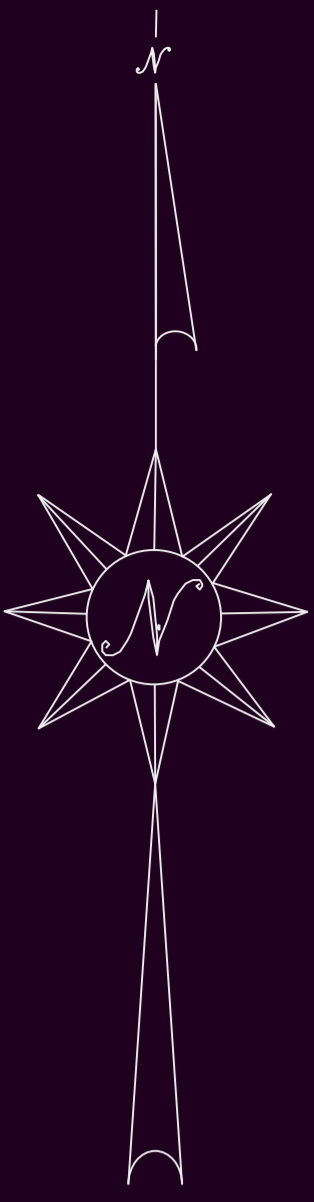


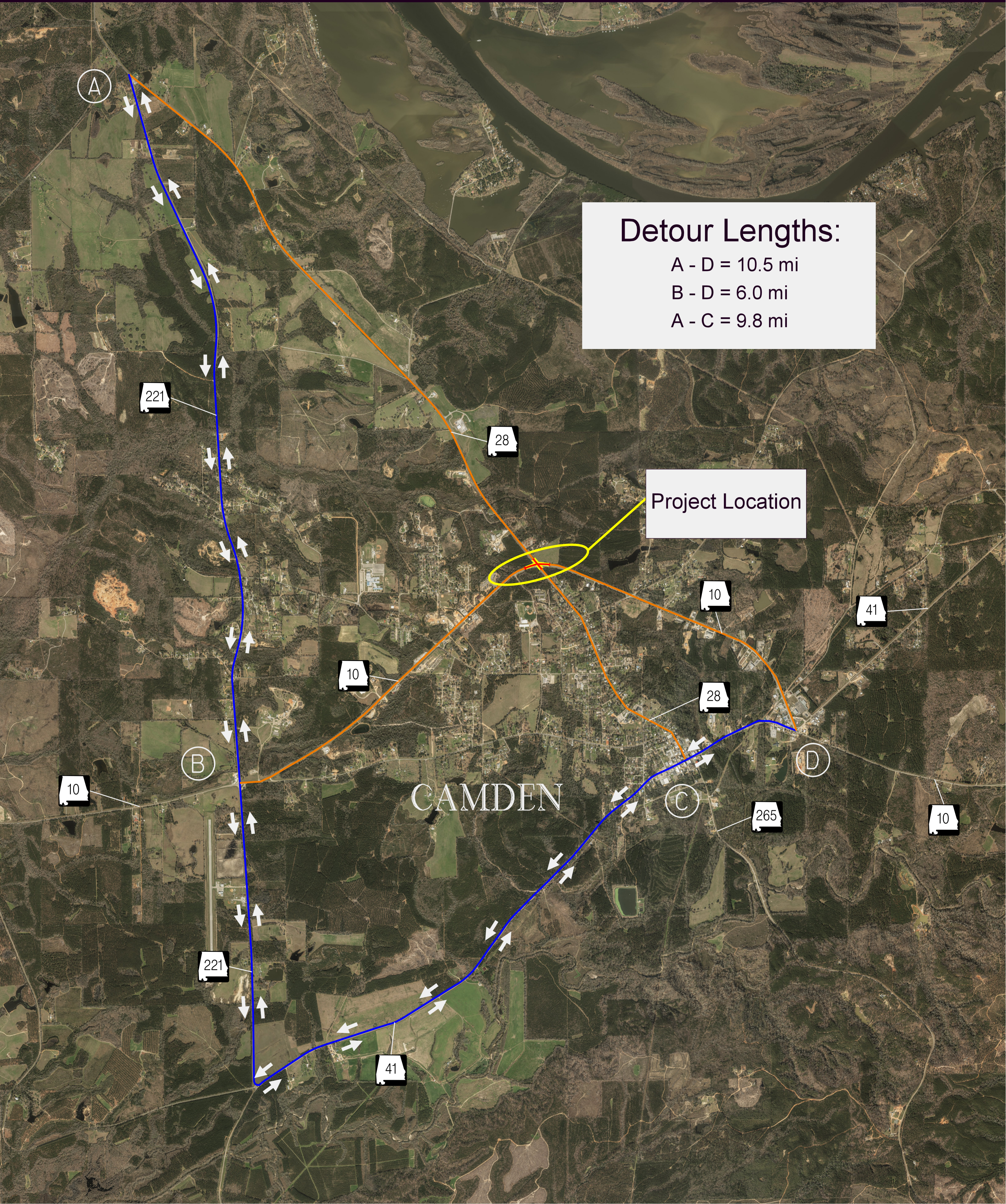
RACR-066-010-004

INTERSECTION IMPROVEMENT USING CONCRETE PAVEMENT AT SR-10 AND SR-28



LEGEND

- Local Traffic Only
- Detour
- Work Area / Road Closure



Detour Lengths:
A - D = 10.5 mi
B - D = 6.0 mi
A - C = 9.8 mi

Project Location

CAMDEN