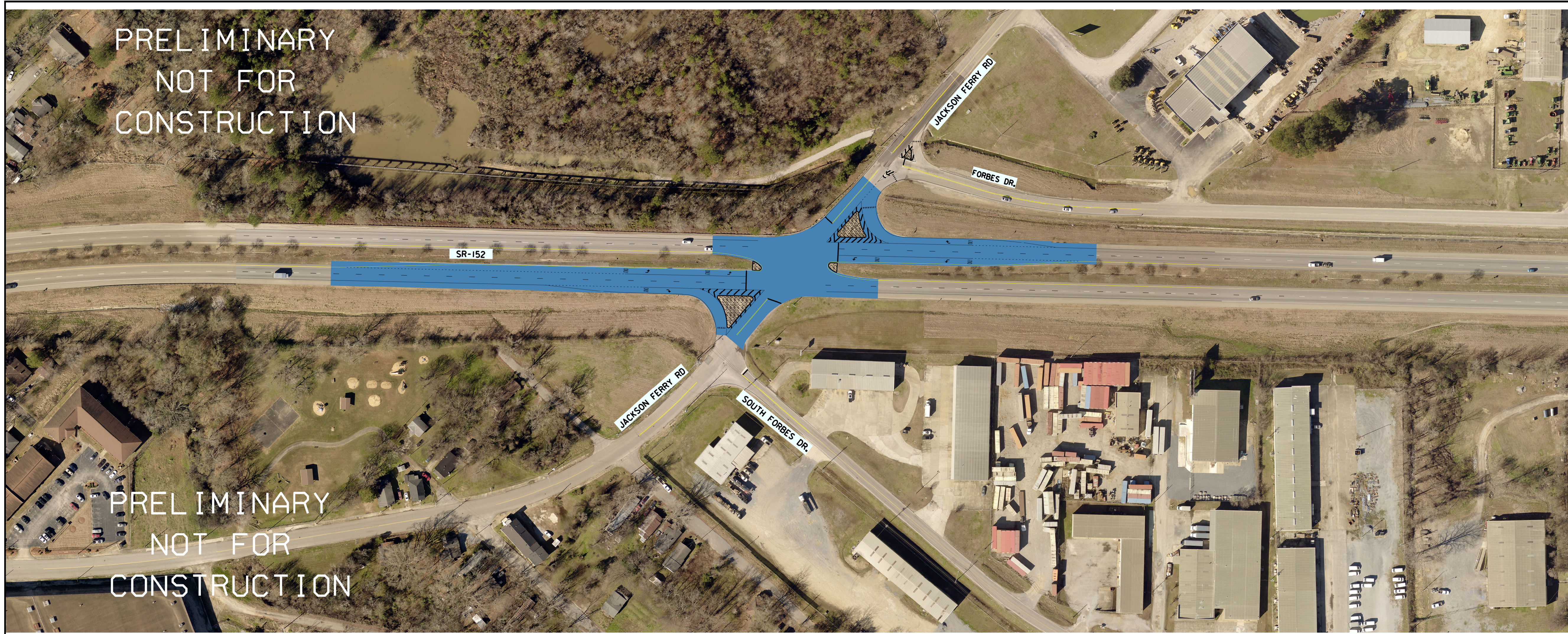


PRELIMINARY  
NOT FOR  
CONSTRUCTION

PRELIMINARY  
NOT FOR  
CONSTRUCTION

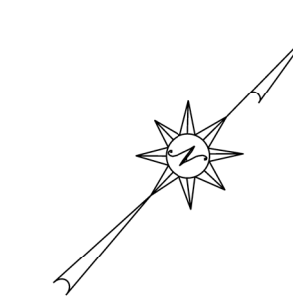


**PLAN LAYOUT**

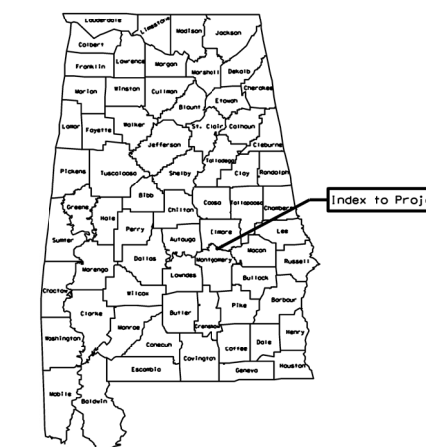
LEGEND

EXISTING PAVEMENT TO BE RETAINED	
PROPOSED READY MIX CONCRETE	
IMPLACE CONCRETE ISLAND	

**FINAL**



SCALE: 1"=100'



PROJECT NO. EACR-051-152-002  
FINAL  
READY MIX CONCRETE PAVING PROJECT  
FOR SOUTHEAST REGION, MONTGOMERY AREA  
INTERSECTION IMPROVEMENTS, INCLUDING  
CONSTRUCTING CONCRETE PAVEMENT AT SR-152  
(NORTHERN BOULEVARD AND JACKSON FERRY ROAD)  
MONTGOMERY COUNTY



ALABAMA DEPARTMENT  
OF  
TRANSPORTATION  
SOUTHEAST REGION