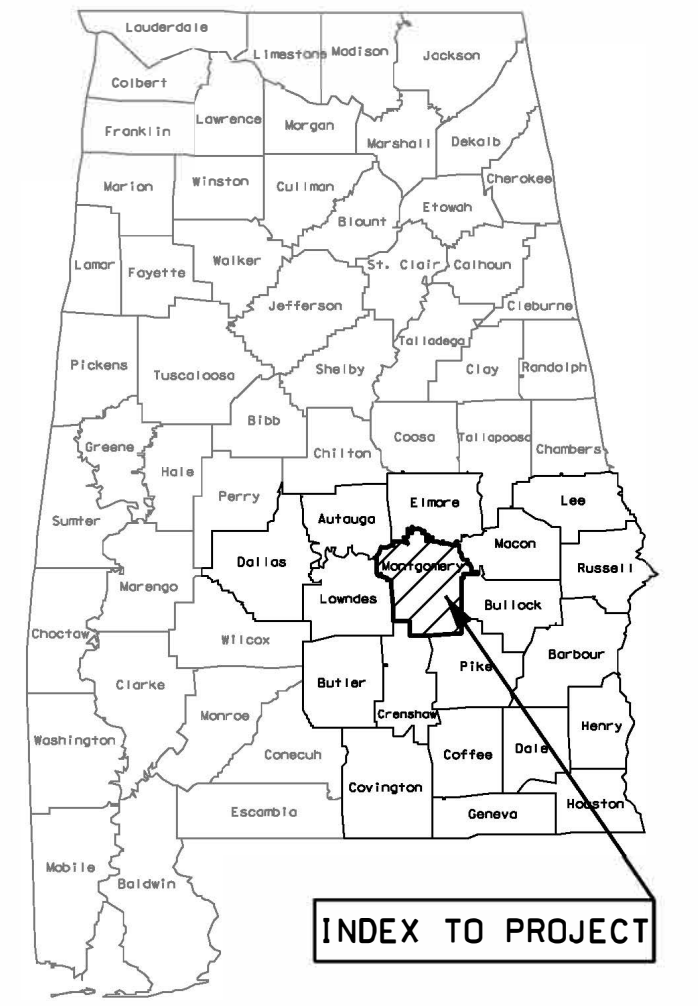


ALABAMA DEPARTMENT OF TRANSPORTATION
A SOUTHEAST REGION PRELIMINARY DESIGN

HSIP-0053(597)






INTERSECTION MODIFICATIONS AT US-231 & US-82 IN MONTGOMERY COUNTY

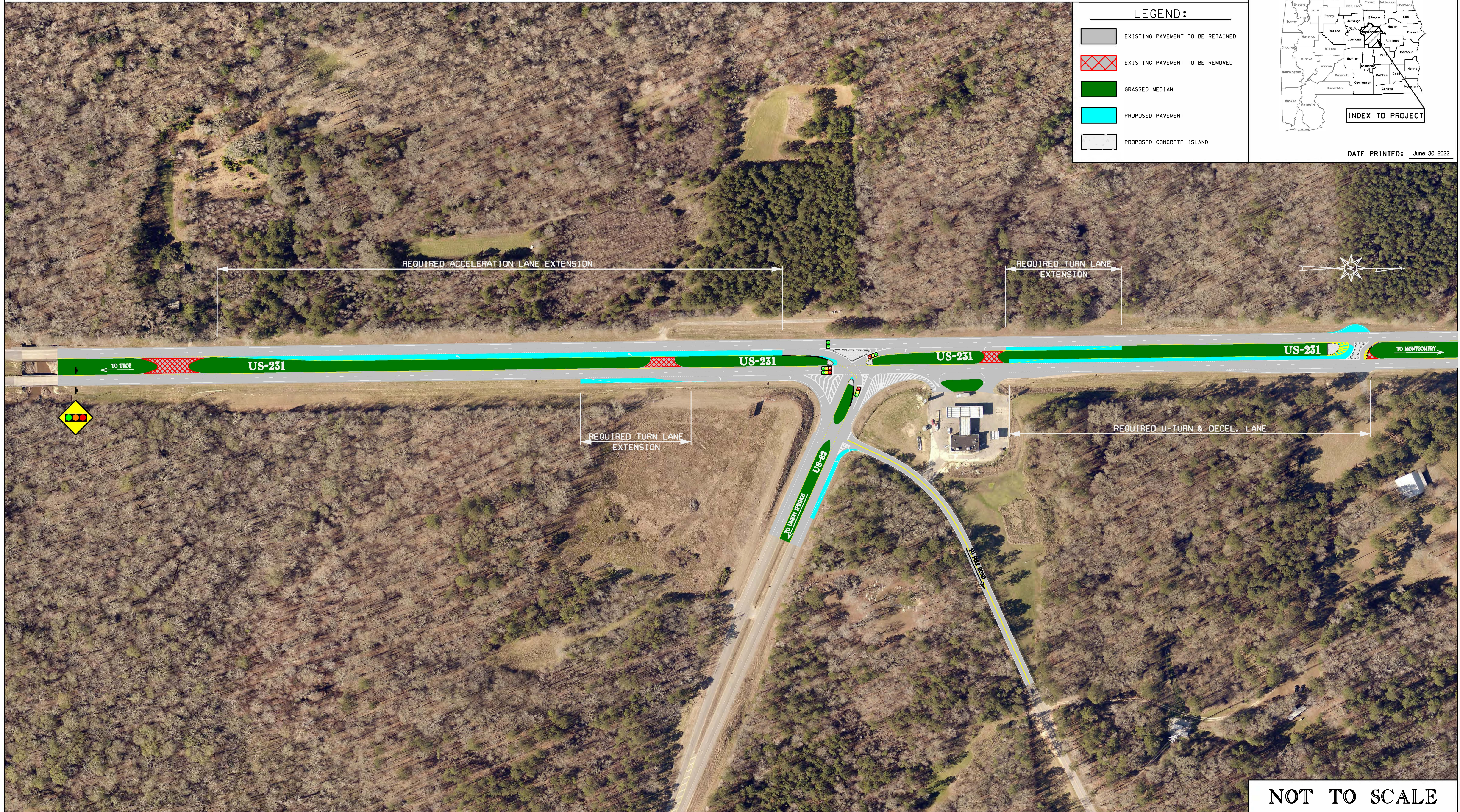


INDEX TO PROJECT

DATE PRINTED: June 30, 2022

LEGEND:

-  EXISTING PAVEMENT TO BE RETAINED
-  EXISTING PAVEMENT TO BE REMOVED
-  GRASSED MEDIAN
-  PROPOSED PAVEMENT
-  PROPOSED CONCRETE ISLAND



NOT TO SCALE