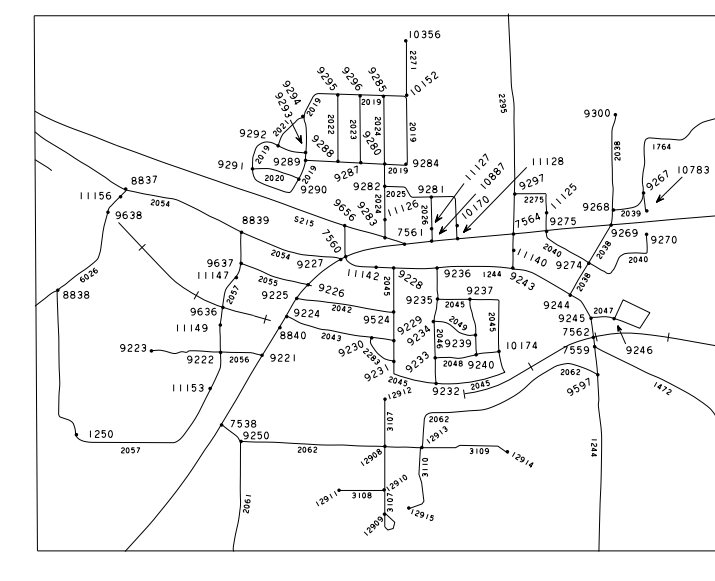


INSET 3

LTR	NODE	LTR	NODE	LTR	NODE	LTR	NODE
A	8937	AA	9632	EA	7595	CA	8871
B	8945	AB	8950	EB	8880	CB	8872
C	8952	AC	8958	EC	8889	CC	11405
D	8946	AD	8936	ED	8912	CD	8929
E	8947	AE	8948	EE	8888	CE	8906
F	8948	AF	11357	EF	8887	CF	898
G	8949	AG	1182	EG	8878	CG	8870
H	8952	AH	9634	EH	8913	CH	8887
I	8951	AI	8927	EI	11386	CI	8982
J	11395	AJ	8962	EJ	9608	CJ	8867
K	8953	AK	8908	EK	8972	CK	8868
L	9652	AL	8970	EL	9866	CL	9615
M	8954	AM	8971	EM	8914	CM	8865
N	8956	AN	11365	EN	8879	CN	9618
O	8955	AO	8926	EO	7594	CO	8921
P	9611	AP	11367	EP	9809	CP	1049
Q	8932	AQ	8964	EQ	8868	CQ	1291
R	9633	AR	11369	ER	8886	CR	9599
S	11344	AS	8909	ES	8914	CS	9608
T	8929	AT	11371	ET	8880	CT	9401
U	8931	AU	11372	EU	8886	CU	9603
V	4172	AV	11373	EV	9865	CV	9601
W	8928	AW	11374	EW	8920	CW	7596
X	9824	AX	8876	EX	8885	CX	9607
Y	8960	AY	8877	EY	8873	CY	11428
Z	8962	AZ	8875	EZ	8881	CZ	9598



INSET 7

LEGEND

- Node Symbol
- Link Number
- Node Number
- Railroad
- County Limits
- Corporate Limits
- City Streets
- County Link Route
- State and U.S. Link Route

REVISIONS

FEATURE	DATE	GRID
MAP UP TO DATE	2013	
Changed CRID to SR500	4.11.16	
Added Link 3231 Nodes 13581,13539	6.23.16	
Added Node 13569	1.20.17	
Identified Timber Top Ln	7.20.17	
Added Link 3234 Nodes 13584,13585	12.14.17	

NOT TO SCALE

LINK-NODE REFERENCE MAP
COUNTY NAME
ALABAMA

PREPARED BY THE
ALABAMA DEPARTMENT OF TRANSPORTATION
DESIGN BUREAU
TRAFFIC ENGINEERING DIVISION
SAFETY PLANNING SECTION

IN COOPERATION WITH THE
U.S. DEPARTMENT OF TRANSPORTATION
FEDERAL HIGHWAY ADMINISTRATION

COMPILED FROM DATA AS OF
MONTH YEAR