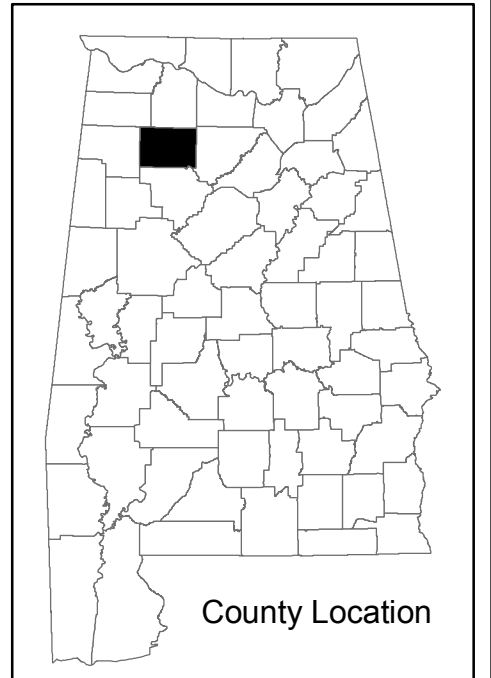
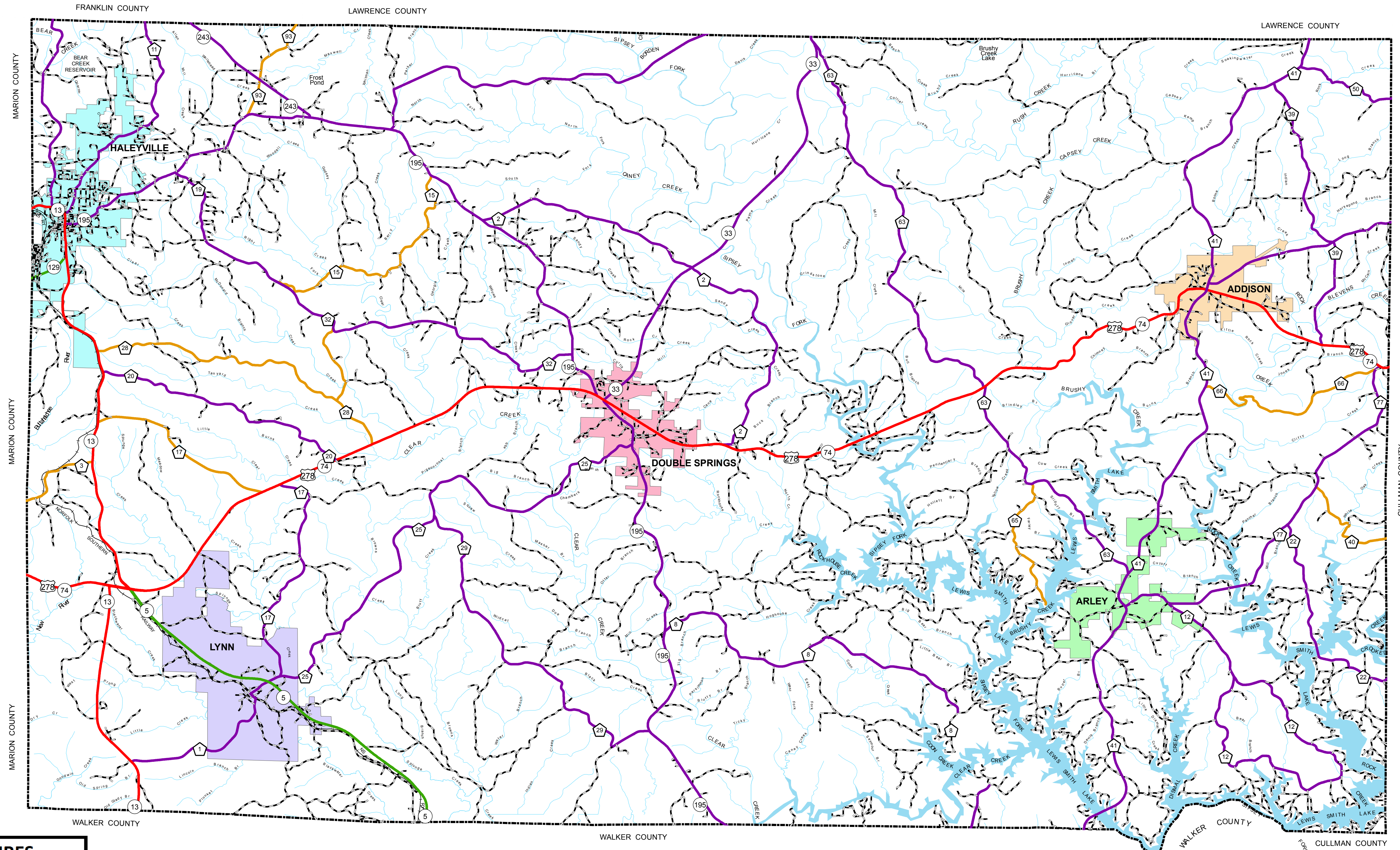
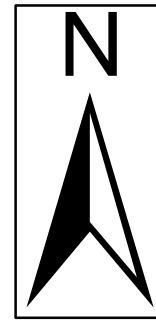


WINSTON COUNTY HIGHWAY FUNCTIONAL CLASSIFICATION SYSTEM

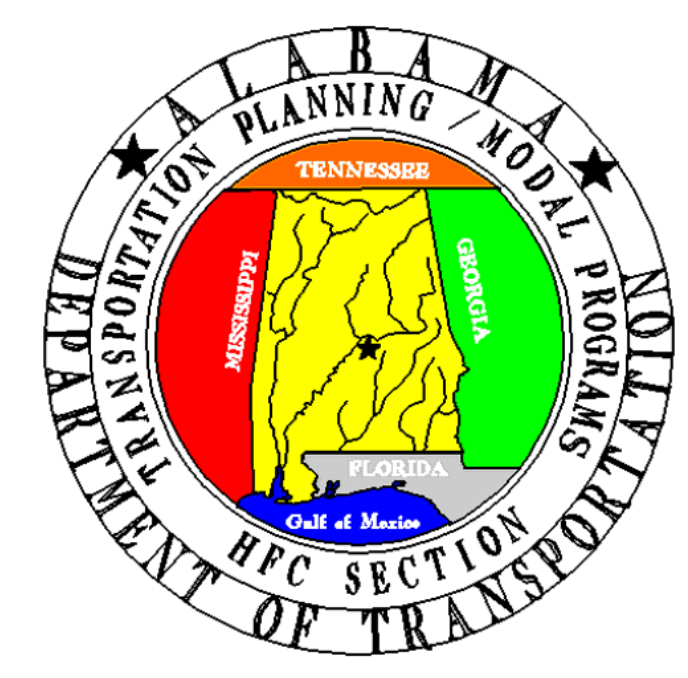


- CITY**
- Addison
 - Arley
 - Double Springs
 - Haleyville
 - Lynn

APPROVED SIGNATURES

	DATE
Federal Highway Administration	
BUREAU CHIEF TRANSPORTATION PLANNING/MODAL PROGRAMS	

Winston County
ALABAMA DEPARTMENT OF TRANSPORTATION
HIGHWAY FUNCTIONAL CLASSIFICATION
TRANSPORTATION PLANNING & MODAL PROGRAMS BUREAU



- LEGEND**
Highway Functional Classification
- 1 Interstate
 - 2 Principal Arterial-Other Freeways and Expressways
 - 3 Principal Arterial-Other
 - 4 Minor Arterial
 - 5 Major Collector
 - 6 Minor Collector
 - 7 Local Road
 - Proposed Road
 - OpenWater
 - Streams / Creeks
 - Swamp / Marsh
 - Large Urban Area
 - Large Urban Study Area
 - Small Urban Area
 - Parks
 - County Boundary
 - +— Railroad
 - I INTERSTATE
 - 20 US ROUTES
 - 00 STATE ROUTES
 - 00 COUNTY ROADS

REVISIONS

NAME	DATE	COMMENTS
B. Whetstone	January 17, 2017	Reclassified a portion of CR 8 from a Minor Collector to a Major Collector

Disclaimer of Liability:
 Due to the scale of this map neither the Alabama Department of Transportation (ALDOT) or the State of Alabama nor any employees and contractors thereof, make any warranty, expressed or implied, or assumes any legal liability, or responsibility, for the accuracy, completeness, or usefulness of any information contained on this map.

FHWA APPROVAL DATE
 DATE January 23, 2017

