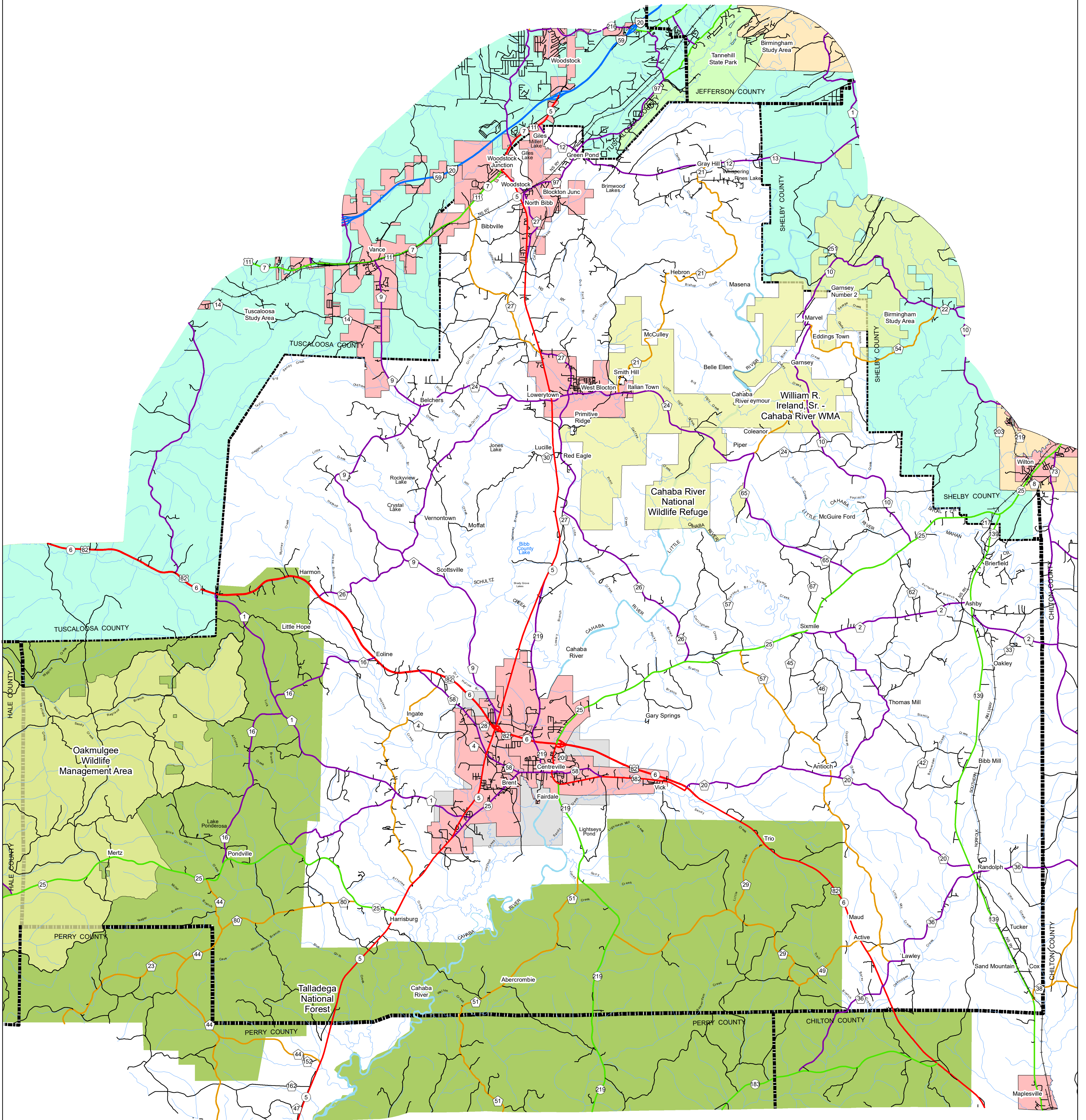
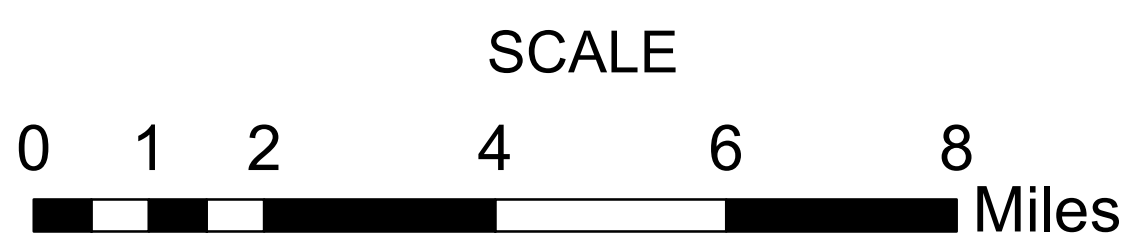



# BIBB COUNTY HIGHWAY FUNCTIONAL CLASSIFICATION SYSTEM



| APPROVED SIGNATURES            |      |
|--------------------------------|------|
| Federal Highway Administration | DATE |
| Bureau Chief Maintenance       | DATE |





**Federal Highway Administration**  
Alabama Division Office

## BIBB COUNTY

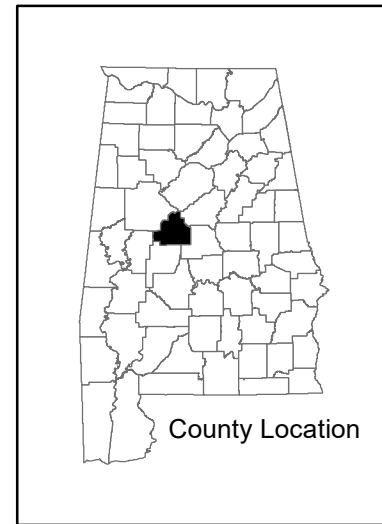
### ALABAMA DEPARTMENT OF TRANSPORTATION

#### Highway Functional Classification

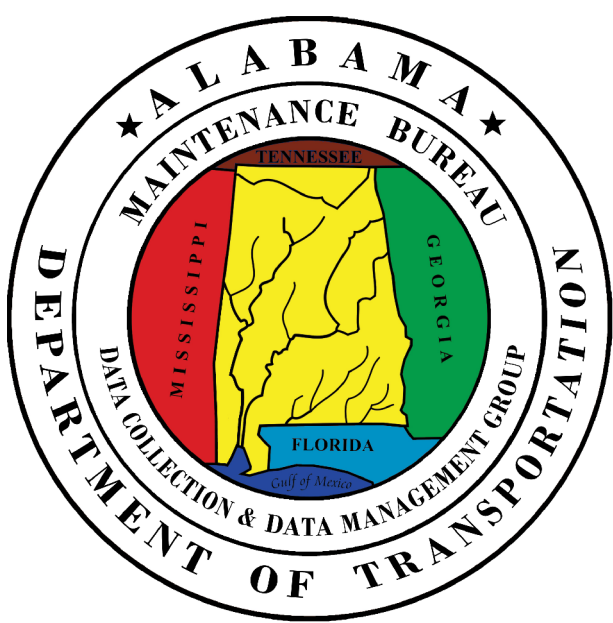
| REVISIONS  |                             |
|------------|-----------------------------|
| DATE       | COMMENTS                    |
| July, 2021 | Added New Border and Legend |
|            |                             |
|            |                             |

*Disclaimer of Liability:*  
Due to the scale of this map neither the Alabama Department of Transportation (ALDOT) or the State of Alabama nor any employees and contractors thereof make any warranty, expressed or implied, or assume any legal liability or responsibility for the accuracy, completeness, or usefulness of any information contained on this map.

FHWA APPROVAL DATE: \_\_\_\_\_  
DATE: July, 2021



County Location



**LEGEND**

**Highway Functional Classification**

- 1 Interstate
- 2 Principal Arterial-Other Freeways and Expressways
- 3 Principal Arterial- Other
- 4 Minor Arterial
- 5 Major Collector
- 6 Minor Collector
- 7 Local Road
- Proposed Road
- Open Water

- Large Urban Area
- Large Urban Study Area
- Small Urban Area
- State Parks
- Wildlife Management Area
- Federal Lands

- Railroad
- INTERSTATE
- U.S.
- STATE
- COUNTY
- City Limit
- County Boundary