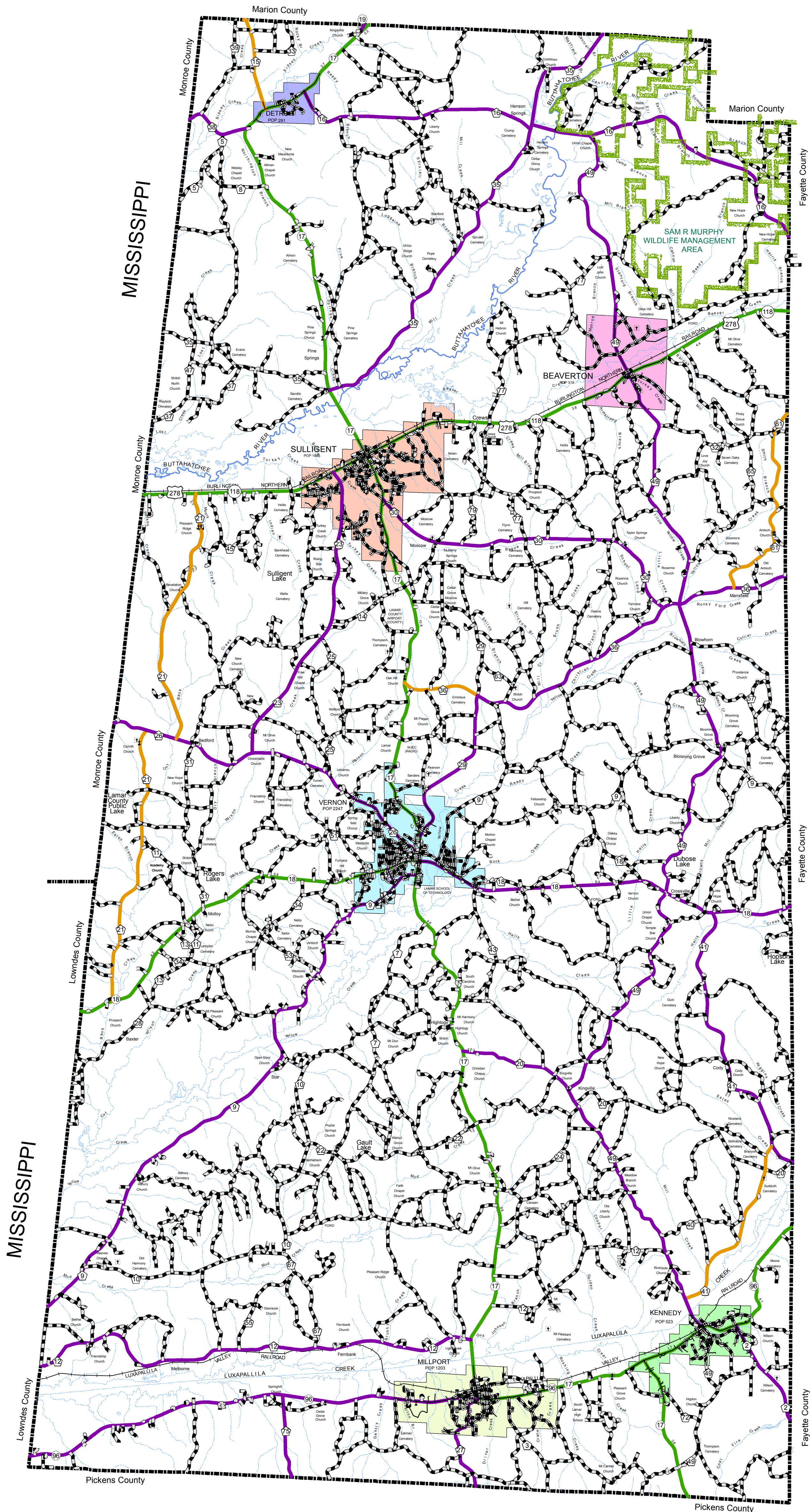
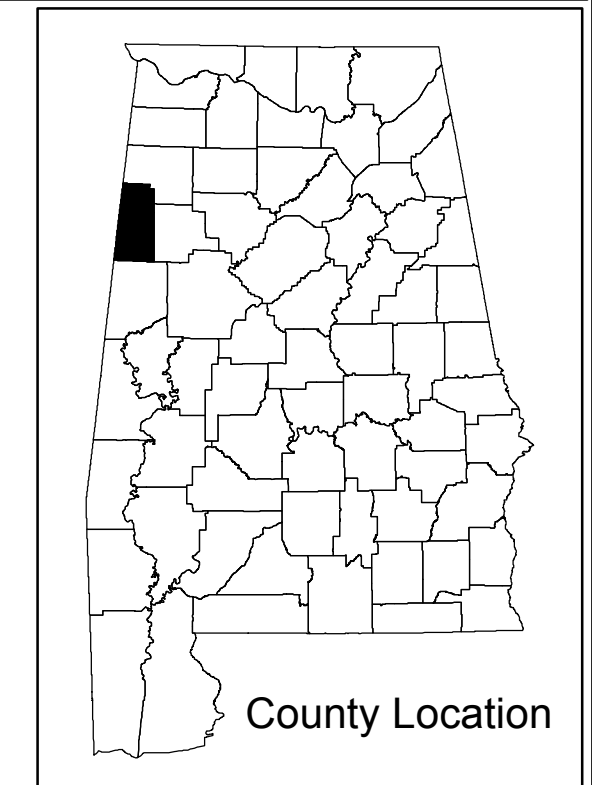


LAMAR COUNTY HIGHWAY FUNCTIONAL CLASSIFICATION SYSTEM



Miscellaneous Symbols

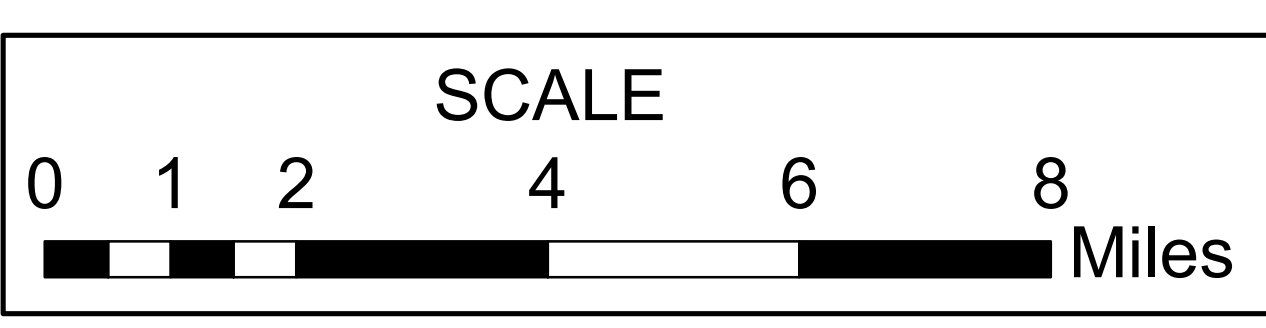
- | | |
|-------------------------------------|-------------------------------------|
| PUBLIC SERVICE FACILITIES | AIRPORTS |
| COURTHOUSE | AIRPORT - GENERAL |
| POST OFFICE | AIRPORT - LIMITED FACILITIES |
| WATER TANK OR STAND PIPE | AIRPORT - COMPLETE FACILITIES |
| PIPE LINE - GAS | HELIPORT |
| PIPE LINE - OIL | LANDING AREA OF STRIP |
| PIPE LINE - PETROLEUM | |
| TRANSMISSION LINE | INDUSTRIAL |
| ROAD SUBSTATION | INDUSTRIAL WAREHOUSE |
| UNDERGROUND TELEPHONE CABLE | INDUS. SHED OR DEPOT |
| RADIO OF TELEVISION STATION | INDUS. CHIMNEY |
| DEPARTMENT OF TRANSPORTATION OFFICE | INDUS. CRANE OR DERRICK |
| RADIO, TELEPHONE TOWER, ETC. | INDUS. OIL OR GAS WELL |
| POLICE OR SHERIFF STATION | INDUS. STORAGE TANK |
| STATE TROOPER HEADQUARTERS | INDUS. STORAGE TANK OR GAS |
| POSTER STATION | INDUS. STORAGE TANK OR GAS |
| STATE ROAD | INDUS. STORAGE TANK OR GAS |
| | CHURCHES, CEMETERIES, ETC. |
| | CHURCH |
| | CHURCH AND SCHOOL |
| | CEMETERY |
| | BLINDING OR REST HOME |
| | HOSPITAL |
| | EDUCATIONAL AND CORRECTIONAL |
| | SCHOOL HOUSE |
| | OTHER EDUCATIONAL INSTITUTION |
| | YOUTH HALL OR COMMUNITY CENTER |
| | INDUSTRIAL EXPERIMENT STATION |
| | PRISON OR CORRECTIONAL INSTITUTION |
| | MISCELLANEOUS |
| | ARMY |
| | NAVY |
| | NAVY YARD |
| | NAVY SHIP YARD |
| | NAVY AIRCRAFT |
| | NAVY STORE |
| | NAVY WAREHOUSE |
| | NAVY OFFICE |
| | NAVY ENGINEERING OFFICE |
| | NAVY TRANSPORTATION OFFICE |
| | NAVY TRANSPORTATION OFFICE |
| | NAVY TRANSPORTATION OFFICE |
| | NAVY TRANSPORTATION OFFICE |



Lamar County Cities

- Beaverton
- Detroit
- Kennedy
- Millport
- Sulligent
- Vernon
- Sam R Murphy WMA

APPROVED SIGNATURES	
Federal Highway Administration	DATE
BUREAU CHIEF TRANSPORTATION PLANNING/MODAL PROGRAMS	DATE



LAMAR COUNTY ALABAMA DEPARTMENT OF TRANSPORTATION Highway Functional Classification Transportation Planning / Modal Programs Bureau



REVISIONS		
NAME	DATE	COMMENTS
B. Whetstone	March 25, 2014	Reclassify CR 23 from a Minor Collector to a Major Collector and a portion of CR 21 from a Local Rd to a Minor Collector

Disclaimer of Liability
 Due to the scale of this map neither the Alabama Department of Transportation (ALDOT) or the State of Alabama nor any employees and contractors shall be held liable for any errors, omissions or misstatements or for any damages or liabilities of any nature whatsoever that may be caused or result from the use of this map.

FHWA APPROVAL DATE
 DATE: April 23, 2014

Federal Highway Administration
 Alabama Division Office

LEGEND Highway Functional Classification

- Interstate
- Principal Arterial-Other Freeways and Expressways
- Principal Arterial-Other
- Minor Arterial
- Major Collector
- Minor Collector
- Local Road
- Proposed Road
- Open Water
- Streams / Creeks
- Swamp / Marsh
- Large Urban Area
- Large Urban Study Area
- Small Urban Area
- Parks
- County Boundary
- Railroad
- INTERSTATE
- US ROUTES
- STATE ROUTES
- COUNTY ROADS
- FOREST ROADS
- NATIONAL FOREST