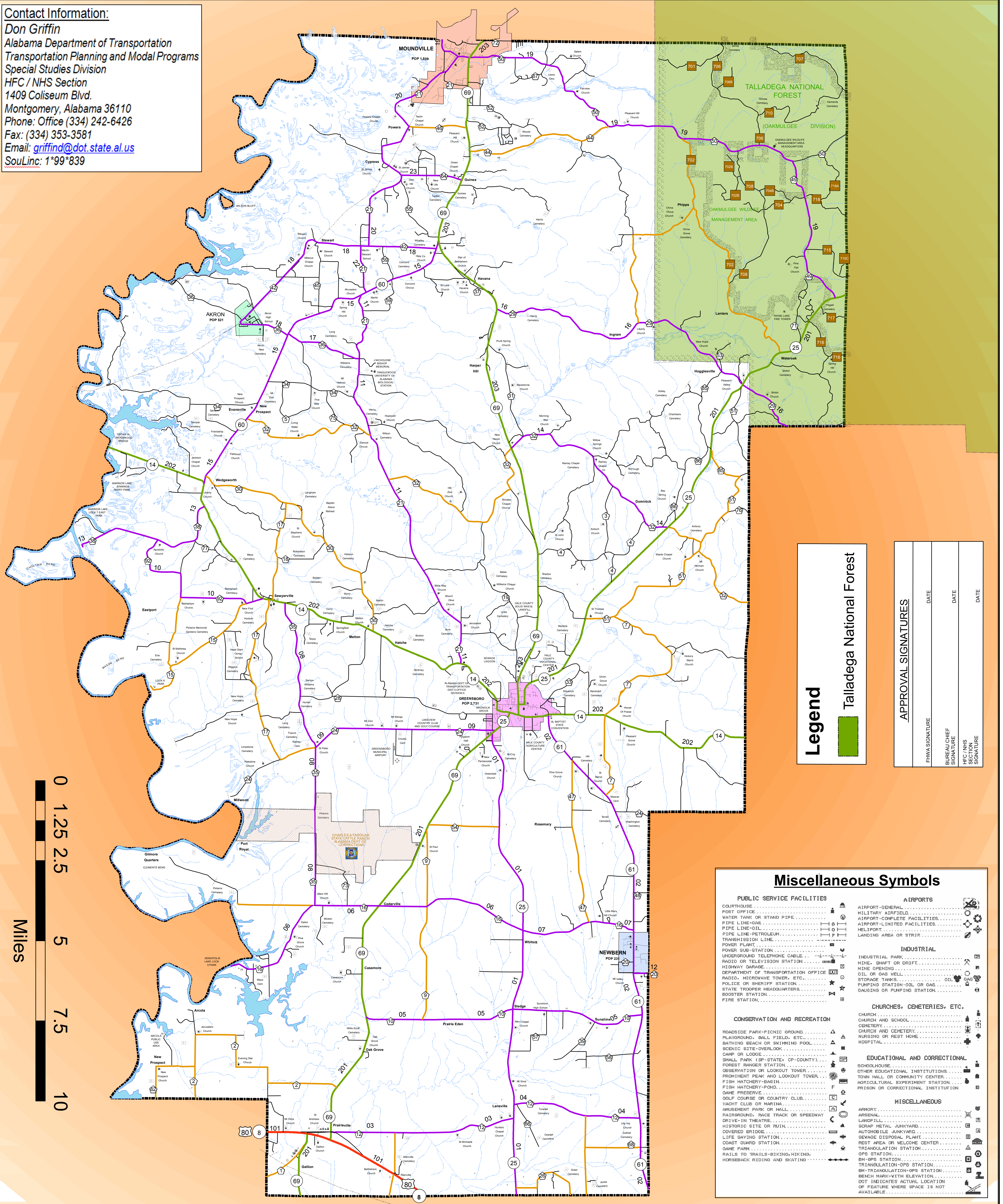


HALE COUNTY HIGHWAY FUNCTIONAL CLASSIFICATION SYSTEM

Contact Information:
Don Griffin
 Alabama Department of Transportation
 Transportation Planning and Modal Programs
 Special Studies Division
 HFC / NHS Section
 1409 Coliseum Blvd.
 Montgomery, Alabama 36110
 Phone: Office (334) 242-6426
 Fax: (334) 353-3581
 Email: griffind@dot.state.al.us
 SouLinc: 1*99*839



Legend

Talladega National Forest

APPROVAL SIGNATURES	
FWMA SIGNATURE	DATE
BUREAU CHIEF SIGNATURE	DATE
HFC / NHS SECTION SIGNATURE	DATE

Miscellaneous Symbols

PUBLIC SERVICE FACILITIES	AIRPORTS
COURTHOUSE	MILITARY AIRFIELD
POST OFFICE	AIRPORT-COMPLET FACILITIES
WATER TANK OR STAND PIPE	AIRPORT-LIMITED FACILITIES
PIPE LINE-OIL	HELIPORT
PIPE LINE-PETROLEUM	LANDING AREA OR STRIP
TRANSMISSION LINE	
POWER PLANT	
POWER SUB-STATION	
UNDERGROUND TELEPHONE CABLE	
RADIO OR TELEVISION STATION	
HIGHWAY GARAGE	
DEPARTMENT OF TRANSPORTATION OFFICE	
RADIO, MICROWAVE TOWER, ETC.	
POLICE OR SHERIFF STATION	
STATE TROOPER HEADQUARTERS	
BOOSTER STATION	
FIRE STATION	
	INDUSTRIAL
	INDUSTRIAL PARK
	MINE-SHAFT OR DRIFT
	MINE OPENING
	OIL OR GAS WELL
	STORAGE TANKS
	PUMPING STATION-OIL OR GAS
	Gauging or Pumping Station
	CHURCHES, CEMETERIES, ETC.
	CHURCH
	CHURCH AND SCHOOL
	CEMETERY
	CHURCH AND CEMETERY
	NURSING OR REST HOME
	HOSPITAL
	EDUCATIONAL AND CORRECTIONAL
	SCHOOLHOUSE
	OTHER EDUCATIONAL INSTITUTIONS
	TOWN HALL OR COMMUNITY CENTER
	AGRICULTURAL EXPERIMENT STATION
	PRISON OR CORRECTIONAL INSTITUTION
	MISCELLANEOUS
	ARMORY
	ARSENAL
	LANDFILL
	SCRAP METAL YARD
	AUTOMOBILE YARD
	SEWAGE DISPOSAL PLANT
	REST AREA OR WELCOME CENTER
	TRIANGULATION STATION
	OPS STATION
	BH-OPS STATION
	TRIANGULATION-OPS STATION
	BH-TRIANGULATION-OPS STATION
	BENCH MARK-WITH ELEVATION
	DOT INDICATES ACTUAL LOCATION OF FEATURE WHERE SPACE IS NOT AVAILABLE

NORTH

Disclaimer of Liability
 Due to the scale of this map neither the Alabama Department of Transportation (ALDOT) or the State of Alabama nor any employees and contractors thereof, make any warranty, expressed or implied, or assume any liability, or responsibility, for the accuracy, completeness, or usefulness of any information contained on this map.

HALE COUNTY - 33

ALABAMA DEPARTMENT OF TRANSPORTATION
 Highway Functional Classification
 Transportation Planning / Modal Programs Bureau

NAME	DATE	COMMENTS

DATE: November 23, 2004
 DRAWN BY: D.H. GRIFFIN
 DATE DRAWN: NOVEMBER 7, 2008

Legend

Functional Classification	Proposed Functional Class
Urban Interstate - 11	Urban Interstate - 11
Freeway - 12	Freeway - 12
Urban Principal Arterial - 14	Urban Principal Arterial - 14
Urban Minor Arterial - 16	Urban Minor Arterial - 16
Collector - 17	Collector - 17
Rural Interstate - 1	Rural Interstate - 1
Rural Principal Arterial - 2	Rural Principal Arterial - 2
Rural Minor Arterial - 6	Rural Minor Arterial - 6
Rural Major Collector - 7	Rural Major Collector - 7
Rural Minor Collector - 8	Rural Minor Collector - 8

Miscellaneous Items

- GIS_OpenWater_ALDOTDivisions
- GIS_NHD_by_County
- GIS_Swamp_Marsh_HR_NHDWB_County
- TRANSDATA_urban_large
- TRANSDATA_urban_large_study
- TRANSDATA_urban_small
- GIS_County

Legend

- INTERSTATE
- US ROUTES
- STATE ROUTES
- COUNTY ROADS
- FOREST ROADS
- Hale County Cities
- CITY
- Akron
- Greensboro
- Moundville
- Newbern

MAP SCALE
 SEE SCALE ON MAP