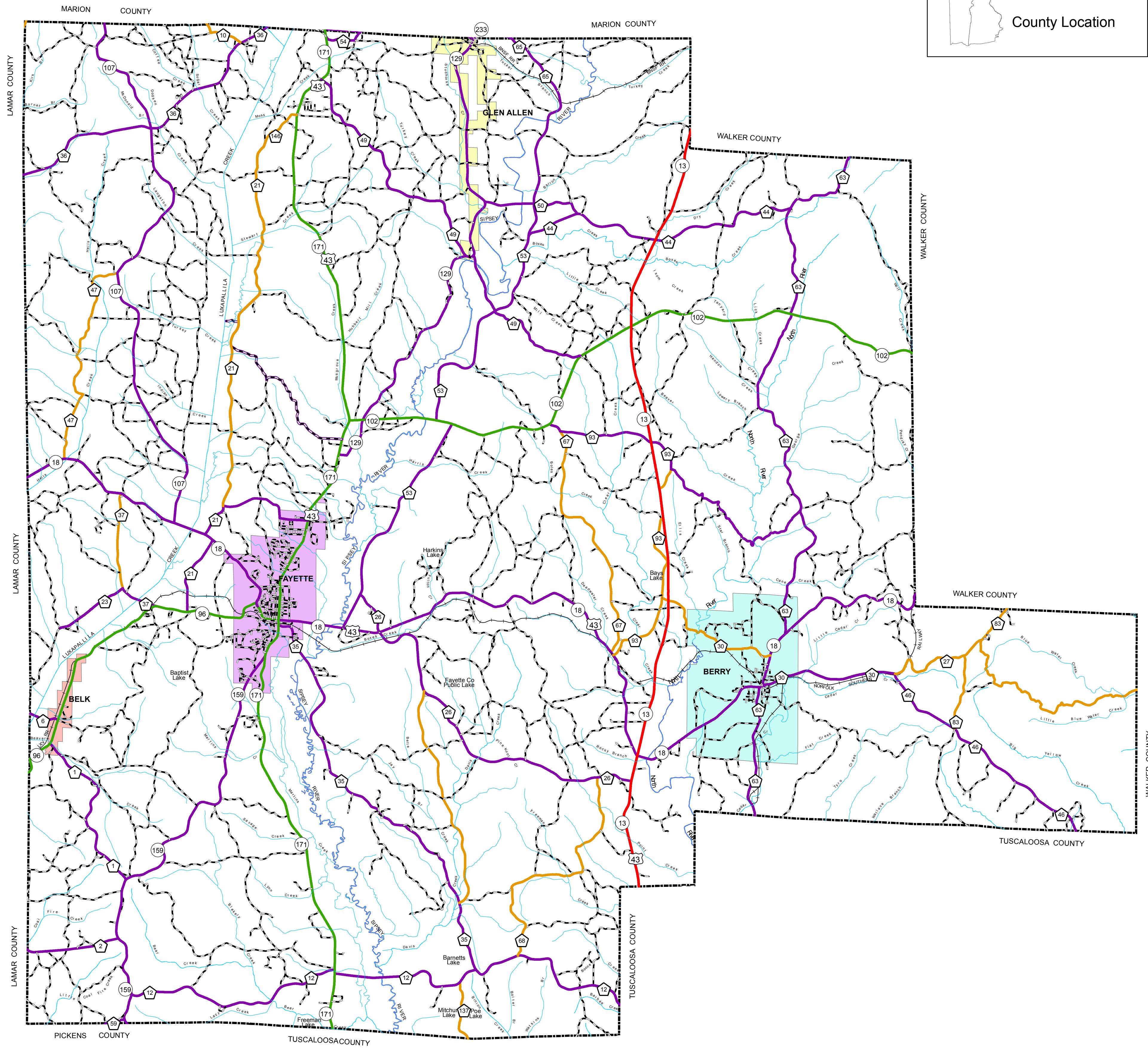
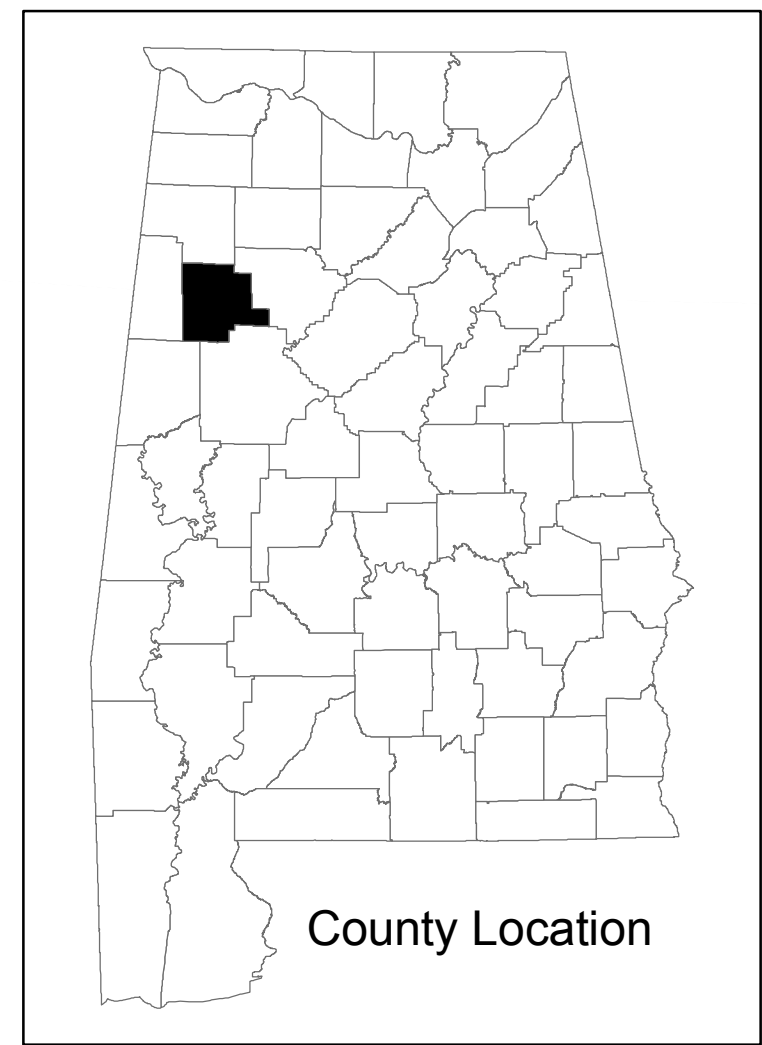


FAYETTE COUNTY HIGHWAY FUNCTIONAL CLASSIFICATION SYSTEM

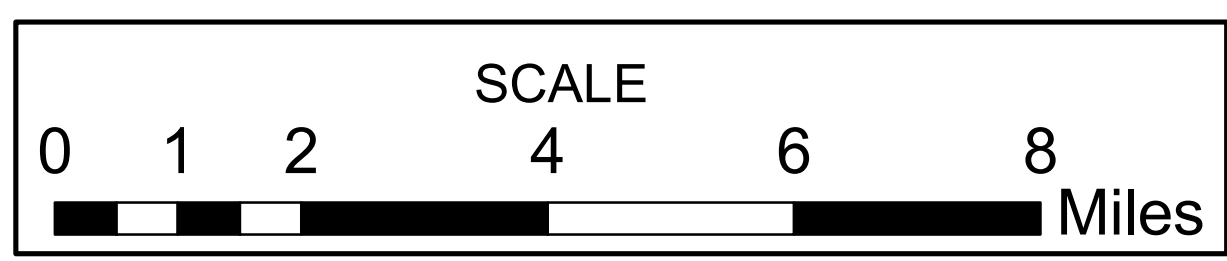


Legend

CITY

- Belk
- Berry
- Fayette
- Glen Allen

APPROVED SIGNATURES	
Federal Highway Administration	DATE
BUREAU CHIEF TRANSPORTATION PLANNING/MODAL PROGRAMS	DATE

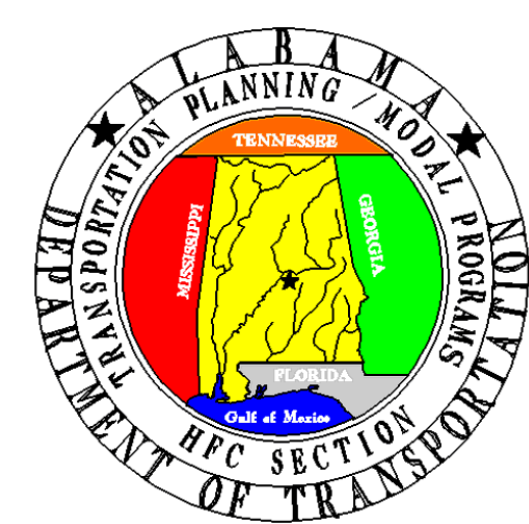


Fayette County

ALABAMA DEPARTMENT OF TRANSPORTATION

Highway Functional Classification

Transportation Planning & Modal Programs Bureau



REVISIONS		
NAME	DATE	COMMENTS
B. Whetstone	11/28/16	Reclassified a portion of CR 21 from a Minor Collector to a Major Collector.
B. Whetstone	11/28/16	Reclassified CR38, 8th Ave NW and 25th St NW from a Local Rd to a Major Collector.

Disclaimer of Liability:
Due to the scale of this map neither the Alabama Department of Transportation (ALDOT) or the State of Alabama nor any employees and contractors shall be held responsible for the accuracy, completeness, or timeliness of any information contained on this map.

FHWA APPROVAL DATE
DATE: December 7, 2016

LEGEND

Highway Functional Classification

- 1 Interstate
- 2 Principal Arterial-Other Freeways and Expressways
- 3 Principal Arterial-Other
- 4 Minor Arterial
- 5 Major Collector
- 6 Minor Collector
- 7 Local Road
- Proposed Road
- Open Water
- Streams / Creeks
- Swamp / Marsh
- Large Urban Area
- Large Urban Study Area
- Small Urban Area
- Parks
- County Boundary
- Railroad
- INTERSTATE
- US ROUTES
- STATE ROUTES
- COUNTY ROADS

Federal Highway Administration
Alabama Division Office