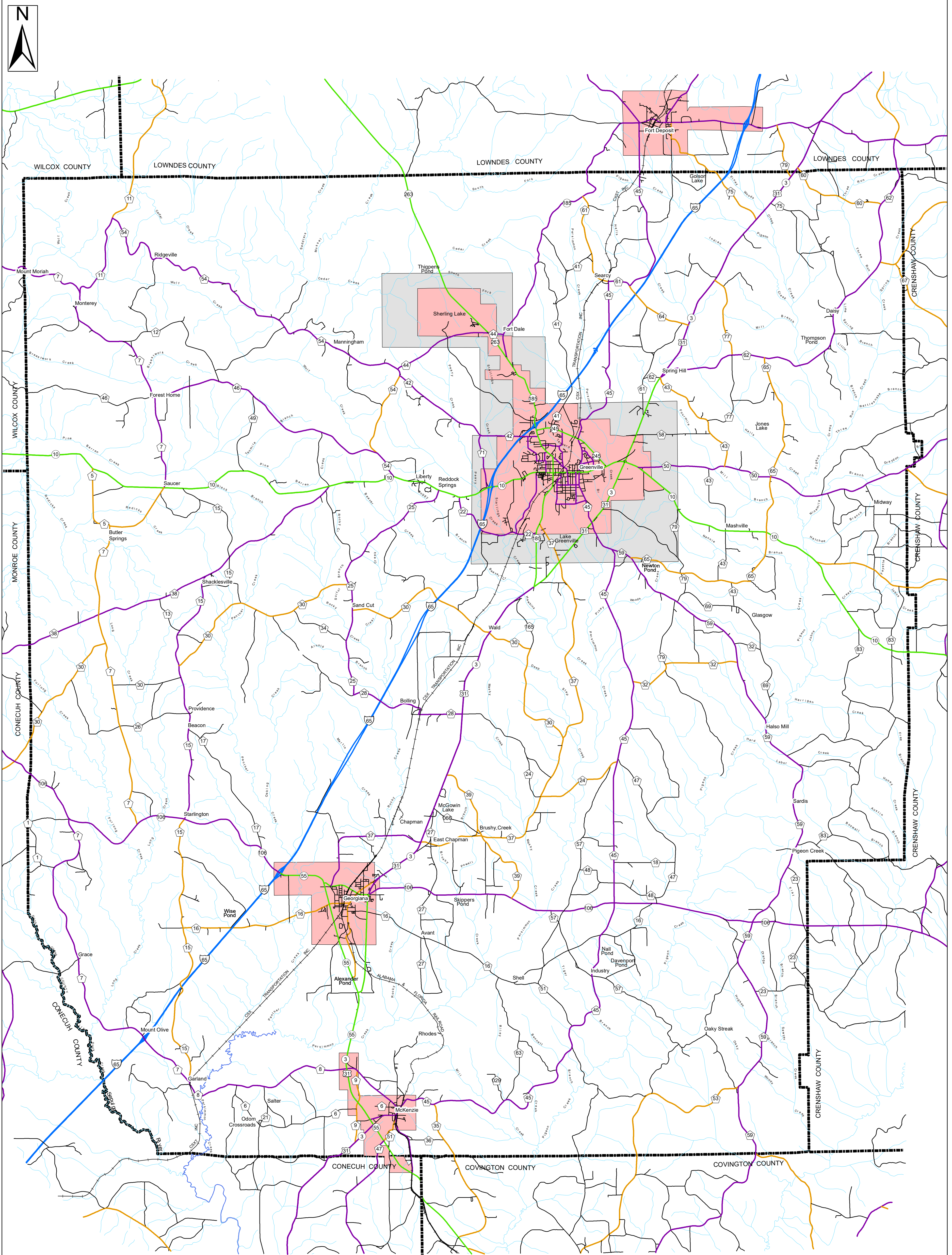
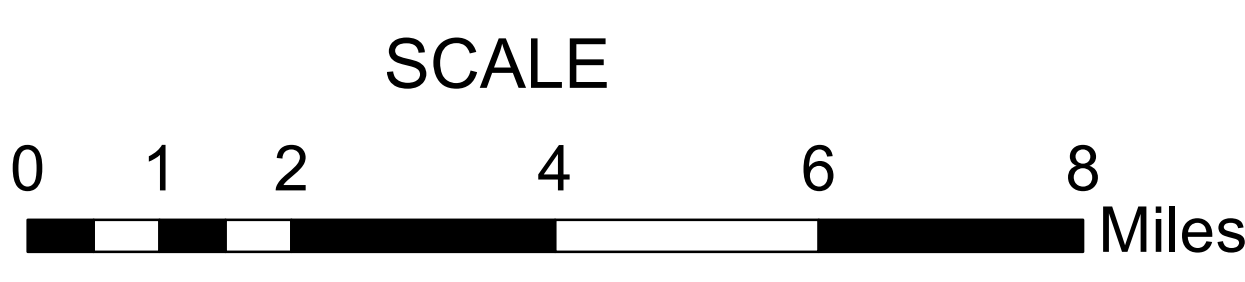


BUTLER COUNTY HIGHWAY FUNCTIONAL CLASSIFICATION SYSTEM



| APPROVED SIGNATURES | |
|--------------------------------|------|
| Federal Highway Administration | DATE |
| Bureau Chief Maintenance | DATE |



Butler County ALABAMA DEPARTMENT OF TRANSPORTATION Highway Functional Classification



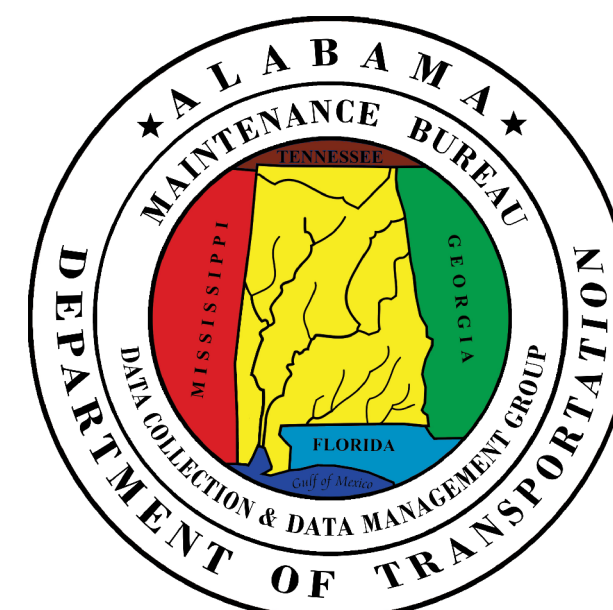
Federal Highway Administration
Alabama Division Office

REVISIONS

| DATE | COMMENTS |
|-------------|-----------------------------|
| March, 2021 | Added new Legend and Border |
| | |
| | |
| | |

Disclaimer of Liability:
Due to the scale of this map neither the Alabama Department of Transportation (ALDOT) or the State of Alabama nor any employee and contractor thereof make any warranty, expressed or implied, or assume any legal liability or responsibility for the accuracy, completeness, or usefulness of any information contained on this map.

FHWA APPROVAL DATE
DATE: July, 2021



LEGEND

- Highway Functional Classification**
- 1 Interstate
 - 2 Principal Arterial-Other Freeways and Expressways
 - 3 Principal Arterial-Other
 - 4 Minor Arterial
 - 5 Major Collector
 - 6 Minor Collector
 - 7 Local Road
 - Proposed Road
 - Open Water
 - Large Urban Area
 - Large Urban Study Area
 - Small Urban Area
 - State Parks
 - County Boundary
- Other Symbols:**
- Railroad
 - INTERSTATE
 - U.S.
 - STATE
 - COUNTY
 - City Limit