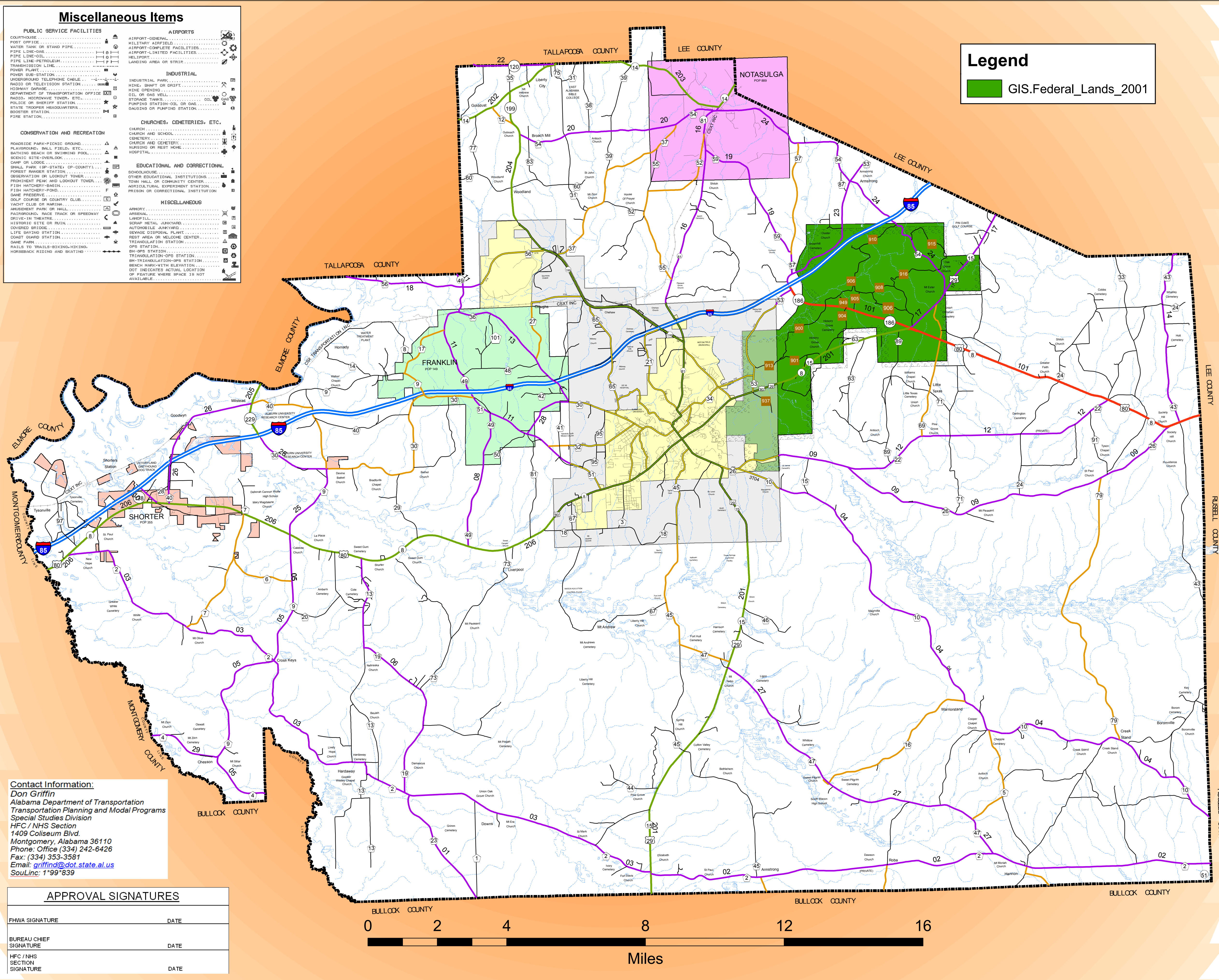


MACON COUNTY HIGHWAY FUNCTIONAL CLASSIFICATION SYSTEM

Miscellaneous Items

PUBLIC SERVICE FACILITIES	AIRPORTS
COURTHOUSE	AIRPORT - GENERAL
POST OFFICE	MILITARY AIRFIELD
WATER TANK OR STAND PIPE	AIRPORT - COMPLETE FACILITIES
PIPE LINE - DIESEL	AIRPORT - LIMITED FACILITIES
PIPE LINE - PETROLEUM	HELIPORT
TRANSMISSION LINE	LANDING AREA OR STRIP
POWER PLANT	
POWER SUB-STATION	
UNDERGROUND TELEPHONE CABLE	
RADIO OR TELEVISION STATION	
ROADWAY GARAGE	
DEPARTMENT OF TRANSPORTATION OFFICE	
RADIO, MICROPHONE TOWER, ETC.	
POLICE OR SHERIFF STATION	
STATE TROOPER HEADQUARTERS	
BOOSTER STATION	
FIRE STATION	
	INDUSTRIAL
	INDUSTRIAL PARK
	MINE, SHIFT OR SHOPS
	MINE OPENING
	OIL OR GAS WELL
	STORAGE TANKS
	PUMPING STATION-OIL OR GAS
	GAUGING OR PUMPING STATION
	CHURCHES, CEMETERIES, ETC.
	CHURCH AND SCHOOL
	CEMETERY
	CHURCH AND CEMETERY
	HOSPITAL
	CONSERVATION AND RECREATION
	ROADSIDE PARK-PICNIC GROUND
	PLAYGROUND, BALL FIELD, ETC.
	BATHING BEACH OR SWIMMING POOL
	SCENIC SITE-LOOKOUT
	CAMP OR LODGE
	SMALL PARK (SP-STATE, CP-COUNTY)
	FOREST BUNKER STATION
	OBSERVATION OR LOOKOUT TOWER
	FRONTIER BEAR AND LOOKOUT TOWER
	FISH HATCHERY-BASIN
	FISH HATCHERY-POND
	DAM PRESERVE
	OIL CURSE OR COUNTY CLUB
	YACHT CLUB OR MARINA
	AMUSEMENT PARK OR MALL
	FAIRGROUND, RACE TRACK OR SPEEDWAY
	DRIVE-IN THEATRE
	HISTORIC SITE OR RUIN
	COVERED BRIDGE
	LIFE SAVING STATION
	COAST GUARD STATION
	DAM FARM
	RAILS TO TRAILS-BIKING-HIKING
	HORSEBACK RIDING AND BOATING
	EDUCATIONAL AND CORRECTIONAL
	SCHOOLHOUSE
	OTHER EDUCATIONAL INSTITUTIONS
	TOWN HALL OR COMMUNITY CENTER
	AGRICULTURAL EXPERIMENT STATION
	PRISON OR CORRECTIONAL INSTITUTION
	MISCELLANEOUS
	ARMORY
	ARSENAL
	LANDFILL
	SCRAP METAL YARD
	AUTOMOBILE JUNKYARD
	SEWAGE DISPOSAL PLANT
	REST AREA OR WELCOME CENTER
	TRAMMULATION STATION
	OPS STATION
	BI-OPS STATION
	TRIANGULATION-OPS STATION
	BENCH MARK-WITH ELEVATION
	DOT INDICATES ACTUAL LOCATION
	OF FEATURE WHERE SPACE IS NOT AVAILABLE



Legend
 GIS.Federal_Lands_2001

Legend

Functional Classification	Proposed Functional Class
Urban Interstate - 11	Urban Interstate - 11
Freeway - 12	Freeway - 12
Urban Principal Arterial - 14	Urban Principal Arterial - 14
Urban Minor Arterial - 16	Urban Minor Arterial - 16
Collector - 17	Collector - 17
Rural Interstate - 1	Rural Interstate - 1
Rural Principal Arterial - 2	Rural Principal Arterial - 2
Rural Minor Arterial - 6	Rural Minor Arterial - 6
Rural Major Collector - 7	Rural Major Collector - 7
Rural Minor Collector - 8	Rural Minor Collector - 8

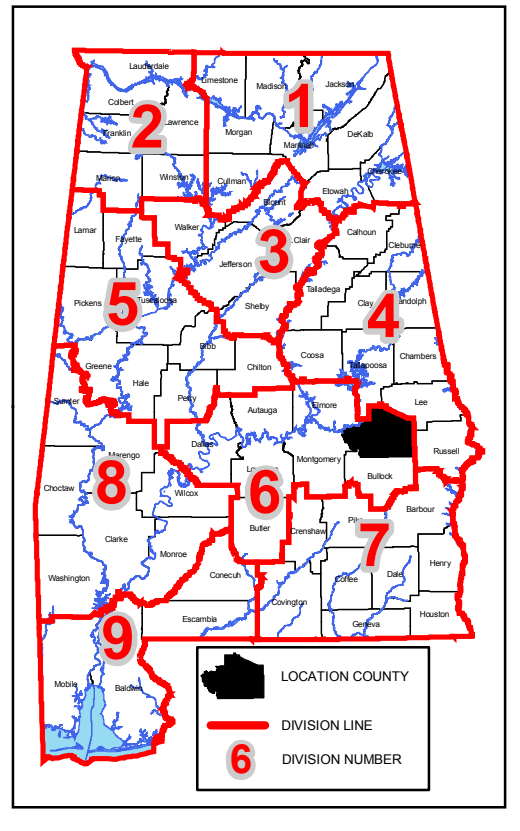
Miscellaneous Items

GIS.OpenWater_ALDOTDivisions	INTERSTATE
GIS.NHD_by_County	US ROUTES
GIS_Swamp_Marsh_HR_NHDWB_County	STATE ROUTES
TRANSDATA.urban_large	COUNTY ROADS
TRANSDATA.urban_large_study	FOREST ROADS
TRANSDATA.urban_small	
GIS.County	

Macon County Cities

CITY	Franklin
	Notasulga
	Shorter
	Tuskegee

MAP SCALE
 SEE SCALE ON MAP



Disclaimer of Liability
 Due to the scale of this map neither the Alabama Department of Transportation (ALDOT) or the State of Alabama nor any employees and contractors thereof, make any warranty, expressed or implied, or assumes any legal liability, or responsibility, for the accuracy, completeness, or usefulness of any information contained on this map.

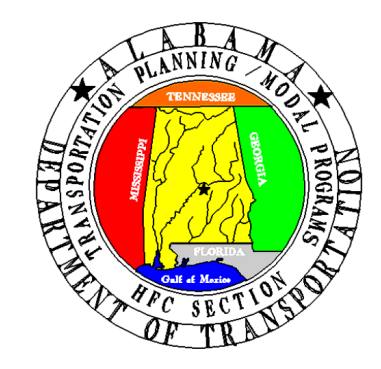
Contact Information:
 Don Griffin
 Alabama Department of Transportation
 Transportation Planning and Modal Programs
 Special Studies Division
 HFC / NHS Section
 1409 Coliseum Blvd.
 Montgomery, Alabama 36110
 Phone: Office (334) 242-6426
 Fax: (334) 353-3581
 Email: griffind@dot.state.al.us
 SouLine: 1*99*839

APPROVAL SIGNATURES

FHWA SIGNATURE	DATE
BUREAU CHIEF SIGNATURE	DATE
HFC / NHS SECTION SIGNATURE	DATE

MACON COUNTY -44

ALABAMA DEPARTMENT OF TRANSPORTATION
 Highway Functional Classification
 Transportation Planning / Modal Programs Bureau



FHWA APPROVAL DATE		DRAWN BY: D.H. GRIFFIN	
DATE November 23, 2004		DATE DRAWN: NOVEMBER 13, 2008	
NAME	DATE	COMMENTS	