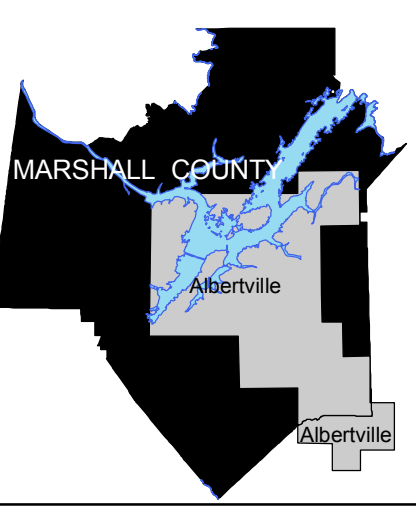
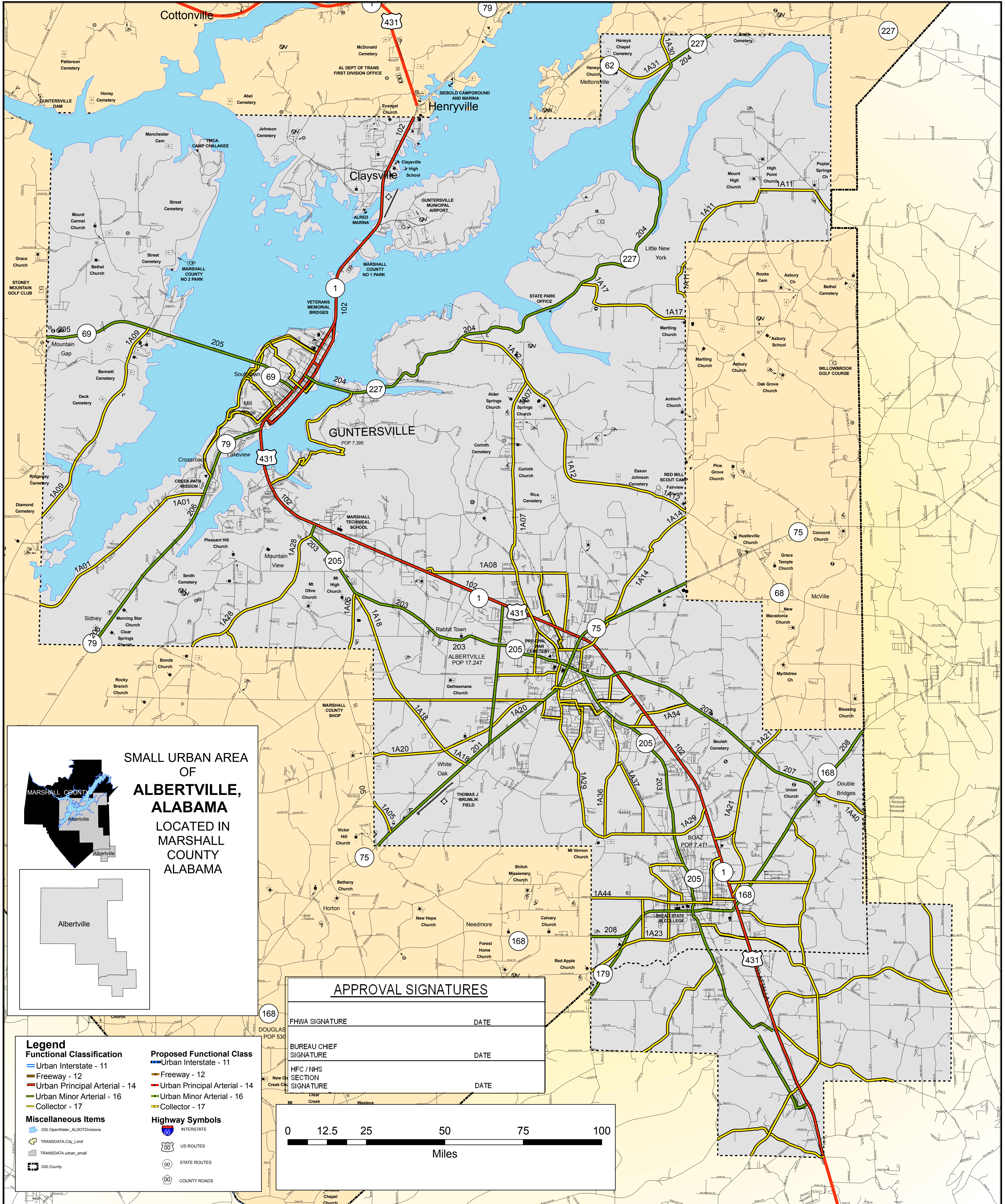
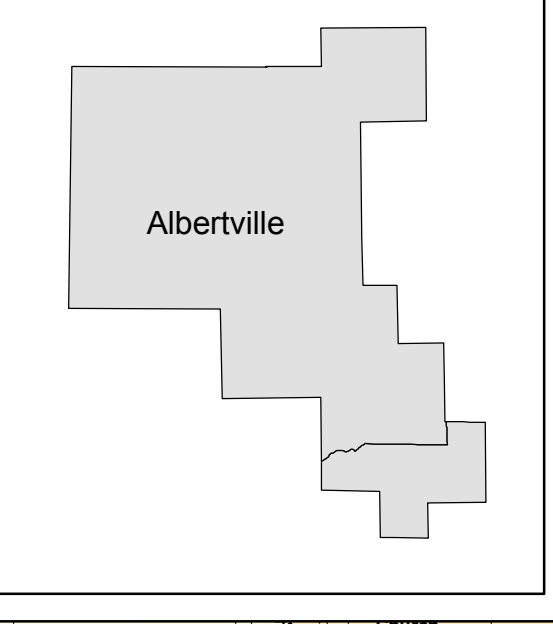


ALBERTVILLE SMALL URBAN HIGHWAY FUNCTIONAL CLASSIFICATION SYSTEM

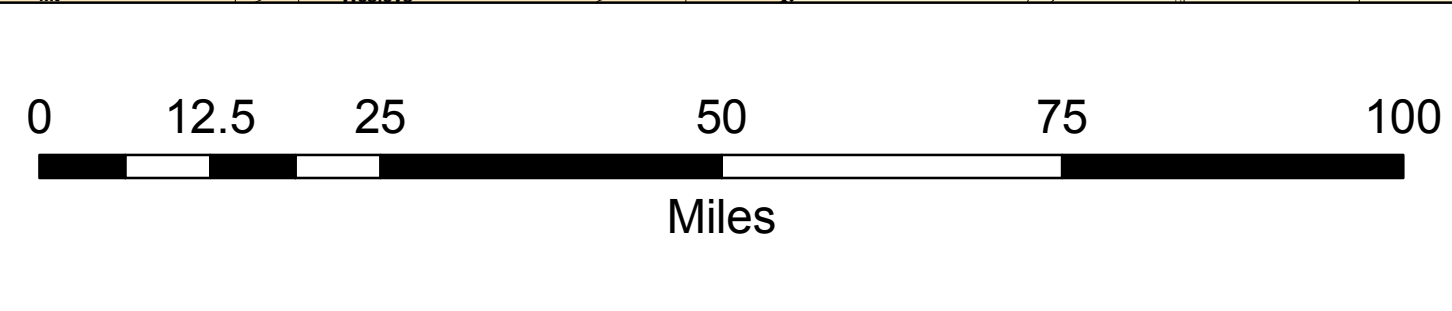


SMALL URBAN AREA OF
ALBERTVILLE, ALABAMA
LOCATED IN
MARSHALL COUNTY
ALABAMA



- Legend**
- Functional Classification**
 - Urban Interstate - 11
 - Freeway - 12
 - Urban Principal Arterial - 14
 - Urban Minor Arterial - 16
 - Collector - 17
 - Miscellaneous Items**
 - GIS OpenWater_ALDOTDivisions
 - TRANSDATA.City_Limit
 - TRANSDATA.urban_small
 - GIS.County
 - Proposed Functional Class**
 - Urban Interstate - 11
 - Freeway - 12
 - Urban Principal Arterial - 14
 - Urban Minor Arterial - 16
 - Collector - 17
 - Highway Symbols**
 - INTERSTATE
 - US ROUTES
 - STATE ROUTES
 - COUNTY ROADS

APPROVAL SIGNATURES	
FHWA SIGNATURE	DATE
BUREAU CHIEF SIGNATURE	DATE
HFC / NHS SECTION SIGNATURE	DATE

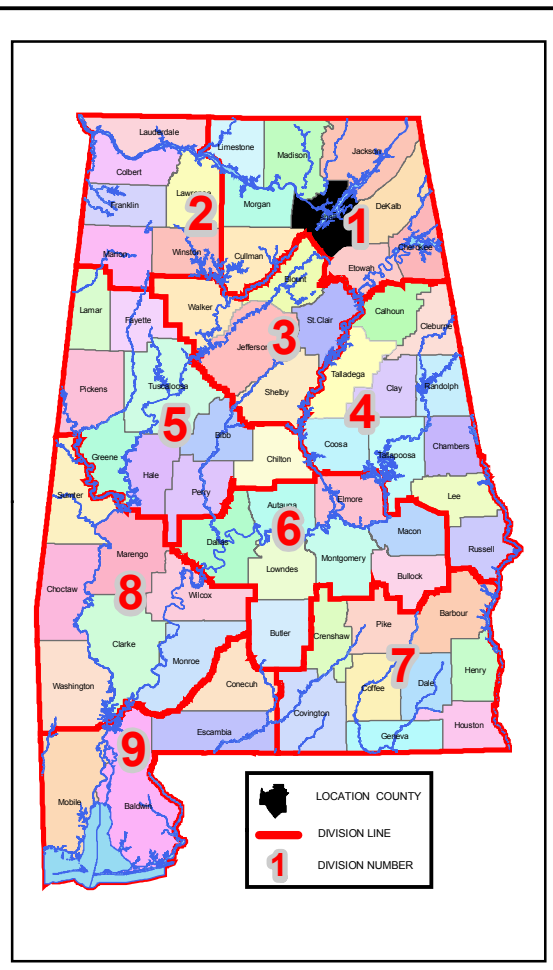


ALBERTVILLE SMALL URBAN

ALABAMA DEPARTMENT OF TRANSPORTATION
Highway Functional Classification
Transportation Planning / Modal Programs Bureau

NAME	DATE	COMMENTS

FHWA APPROVAL DATE	
	November 23, 2004
DRAWN BY:	D.H. GRIFFIN
DATE DRAWN:	JULY 7, 2003



Disclaimer of Liability
Due to the scale of this map neither the Alabama Department of Transportation (ALDOT) or the State of Alabama nor any employees and contractors thereof, make any warranty, expressed or implied, or assumes any legal liability, or responsibility, for the accuracy, completeness, or usefulness of any information contained on this map.

CONTACT INFORMATION

DONALD H. GRIFFIN
State HFC / NHS Manager
Alabama Department of Transportation
Transportation Planning / Modal Programs
Special Studies Division
HFC / NHS Section
Phone: (334) 242-6426
Fax: (334) 353-6581
Email: griffin@dot.state.al.us
SouLine: 1*99*839

MAP SCALE
SEE SCALE ON MAP