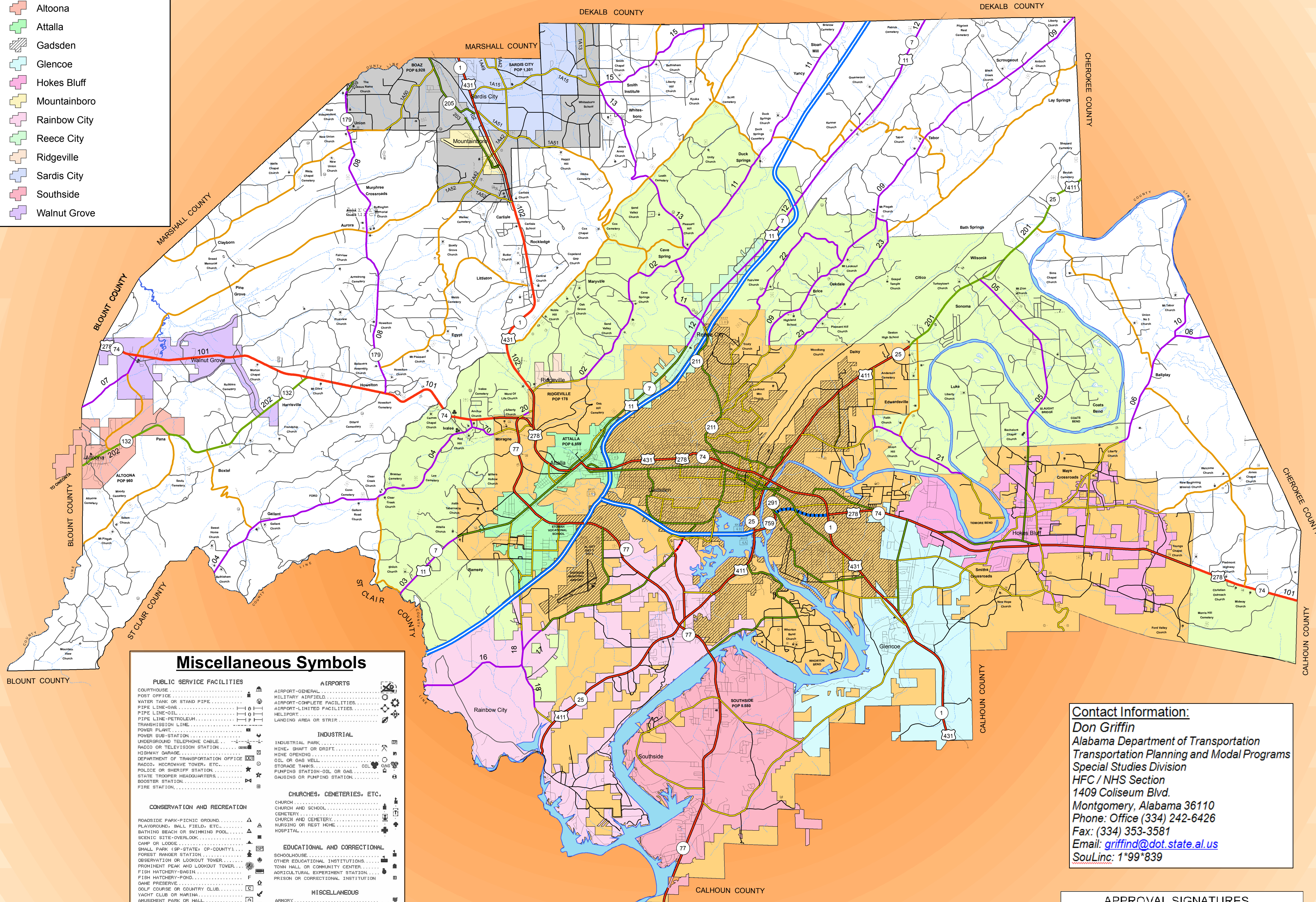


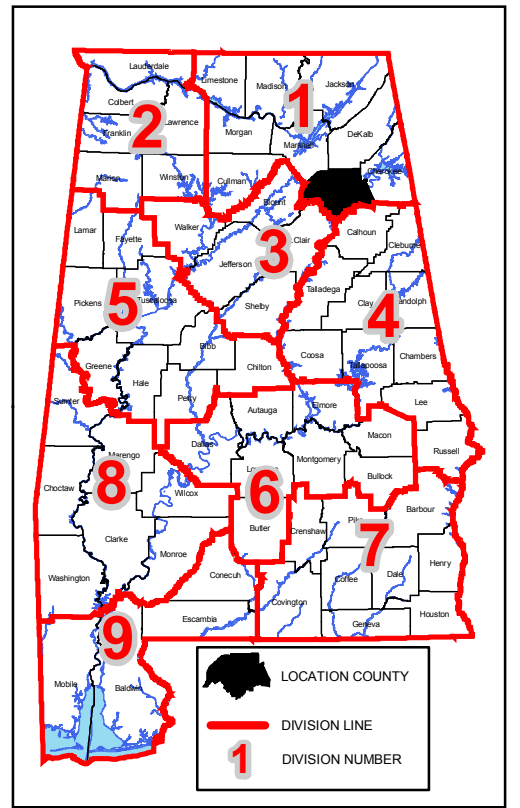
ETOWAH COUNTY HIGHWAY FUNCTIONAL CLASSIFICATION SYSTEM

- Legend**
- ETOWAH COUNTY CITIES**
- CITY**
- Altoona
 - Attalla
 - Gadsden
 - Glencoe
 - Hokes Bluff
 - Mountainboro
 - Rainbow City
 - Reece City
 - Ridgeville
 - Sardis City
 - Southside
 - Walnut Grove



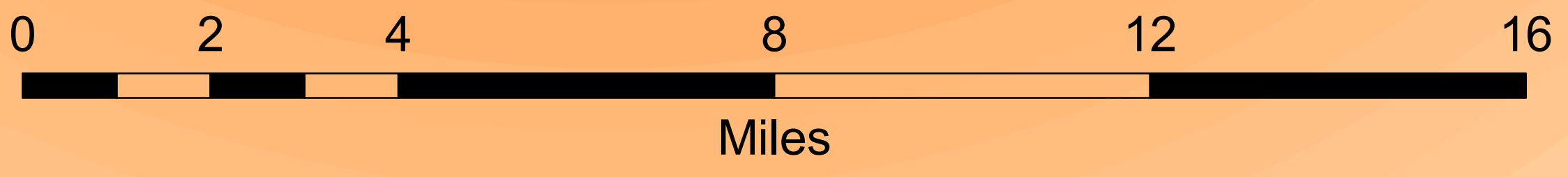
- Legend**
- Functional Classification**
- Urban Interstate - 11
 - Freeway - 12
 - Urban Principal Arterial - 14
 - Urban Minor Arterial - 16
 - Collector - 17
 - Rural Interstate - 1
 - Rural Principal Arterial - 2
 - Rural Minor Arterial - 6
 - Rural Major Collector - 7
 - Rural Minor Collector - 8
- Proposed Functional Class**
- Urban Interstate - 11
 - Freeway - 12
 - Urban Principal Arterial - 14
 - Urban Minor Arterial - 16
 - Collector - 17
 - Rural Interstate - 1
 - Rural Principal Arterial - 2
 - Rural Minor Arterial - 6
 - Rural Major Collector - 7
 - Rural Minor Collector - 8
- Miscellaneous Items**
- GIS.OpenWater_ALDOTDivisions
 - GIS.NHD_by_County
 - GIS_Swamp_Marsh_HR_NHDWB_County
 - TRANSDATA.urban_large
 - TRANSDATA.urban_large_study
 - TRANSDATA.urban_small
 - GIS.County
 - INTERSTATE
 - US ROUTES
 - STATE ROUTES
 - COUNTY ROADS
 - FOREST ROADS

MAP SCALE
SEE SCALE ON MAP



Disclaimer of Liability
Due to the scale of this map neither the Alabama Department of Transportation (ALDOT) or the State of Alabama nor any employees and contractors thereof, make any warranty, expressed or implied, or assumes any legal liability, or responsibility, for the accuracy, completeness, or usefulness of any information contained on this map.

- Miscellaneous Symbols**
- PUBLIC SERVICE FACILITIES**
- COURTHOUSE
 - POST OFFICE
 - WATER TANK OR STAND PIPE
 - PIPE LINE-OIL
 - PIPE LINE-GAS
 - PIPE LINE-PETROLEUM
 - TRANSMISSION LINE
 - POWER PLANT
 - POWER SUB-STATION
 - UNDERGROUND TELEPHONE CABLE
 - RADIO OR TELEVISION STATION
 - ROADWAY GARAGE
 - DEPARTMENT OF TRANSPORTATION OFFICE
 - RADIO, MICROWAVE TOWER, ETC.
 - POLICE OR SHERIFF STATION
 - STATE TROOPER HEADQUARTERS
 - BOOSTER STATION
 - FIRE STATION
- AIRPORTS**
- AIRPORT-GENERAL
 - MILITARY AIRFIELD
 - AIRPORT-COMLETE FACILITIES
 - AIRPORT-LIMITED FACILITIES
 - HELIPORT
 - LANDING AREA OR STRIP
- INDUSTRIAL**
- INDUSTRIAL PARK
 - MINE, SHAFT OR DRIFT
 - MINE SPENDING
 - STORAGE TANKS
 - PUMPING STATION-OIL OR GAS
 - GASING OR PUMPING STATION
- CHURCHES, CEMETERIES, ETC.**
- CHURCH
 - CEMETERY
 - CHURCH AND CEMETERY
 - NURSING OR REST HOME
 - HOSPITAL
- EDUCATIONAL AND CORRECTIONAL**
- SCHOOLHOUSE
 - OTHER EDUCATIONAL INSTITUTIONS
 - TONN HALL OR COMMUNITY CENTER
 - AGRICULTURAL EXPERIMENT STATION
 - PRISON OR CORRECTIONAL INSTITUTION
- MISCELLANEOUS**
- ARMORY
 - ARSENAL
 - LANDFILL
 - SCRAP METAL YARD
 - AUTOMOBILE REPAIRYARD
 - SEWAGE DISPOSAL PLANT
 - REST AREA OR MEADOW CENTER
 - TRIANGULATION STATION
 - OPS STATION
 - BI-OPS STATION
 - TRIANGULATION-OPS STATION
 - BI-TRIANGULATION-OPS STATION
 - BENCH MARKS WITH ELEVATION
 - DOT INDICATES ACTUAL LOCATION OF FEATURE WHERE SPACE IS NOT AVAILABLE
- CONSERVATION AND RECREATION**
- ROADSIDE PARK-PICNIC GROUND
 - PLAYGROUND, BALL FIELD, ETC.
 - BATHING BEACH OR SWIMMING POOL
 - SCENIC SITE-OVERLOOK
 - CAMP OR LODGE
 - SMALL PARK (SP-STATES) OR COUNTY
 - FOREST RANGER STATION
 - OBSERVATION OR LOOKOUT TOWER
 - PROMINENT PEAK AND LOOKOUT TOWER
 - FISH HATCHERY-POND
 - FISH HATCHERY-POND
 - GAME PRESERVE
 - VACANT CLUB OR HARBOR CLUB
 - AMUSEMENT PARK OR MALL
 - HISTORIC SITE OR MONUMENT
 - DRIVE-IN THEATRE
 - HISTORIC SITE OR RUIN
 - COVERED BRIDGE
 - LIFE SAVING STATION
 - DOG BIT STATION
 - GAME PARK
 - TRAILS TO TRAILS-BIKING-HIKING
 - HORSEBACK RIDING AND SWIMMING



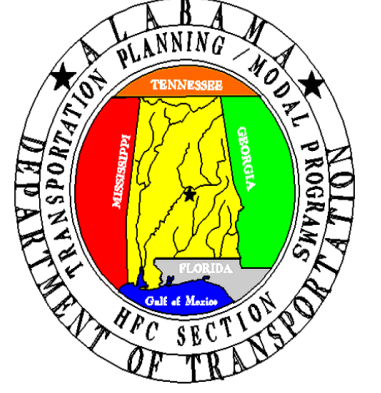
Contact Information:
 Don Griffin
 Alabama Department of Transportation
 Transportation Planning and Modal Programs
 Special Studies Division
 HFC / NHS Section
 1409 Coliseum Blvd.
 Montgomery, Alabama 36110
 Phone: Office (334) 242-6426
 Fax: (334) 353-3581
 Email: griffind@dot.state.al.us
 SouLinc: 1'99*839

APPROVAL SIGNATURES

FHWA SIGNATURE	DATE
BUREAU CHIEF SIGNATURE	DATE
HFC / NHS SECTION SIGNATURE	DATE

ETOWAH COUNTY - 28

ALABAMA DEPARTMENT OF TRANSPORTATION
 Highway Functional Classification
 Transportation Planning / Modal Programs Bureau



FHWA APPROVAL DATE		DRAWN BY: D.H. GRIFFIN	
DATE November 3, 2009		DATE DRAWN: NOVEMBER 18, 2008	
NAME	DATE	COMMENTS	
D. GRIFFIN	11/3/2009	CR-24 FROM CR-79 TO GADSDEN U.B. - LOCAL TO MAJOR COLLECTOR	
D. GRIFFIN	11/3/2009	CR-24 FROM GADSDEN U.B. TO U.S. 278 - LOCAL TO URBAN COLLECTOR	