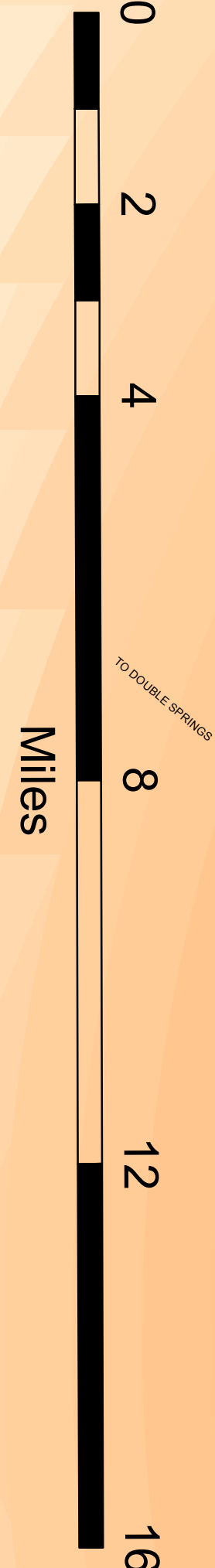
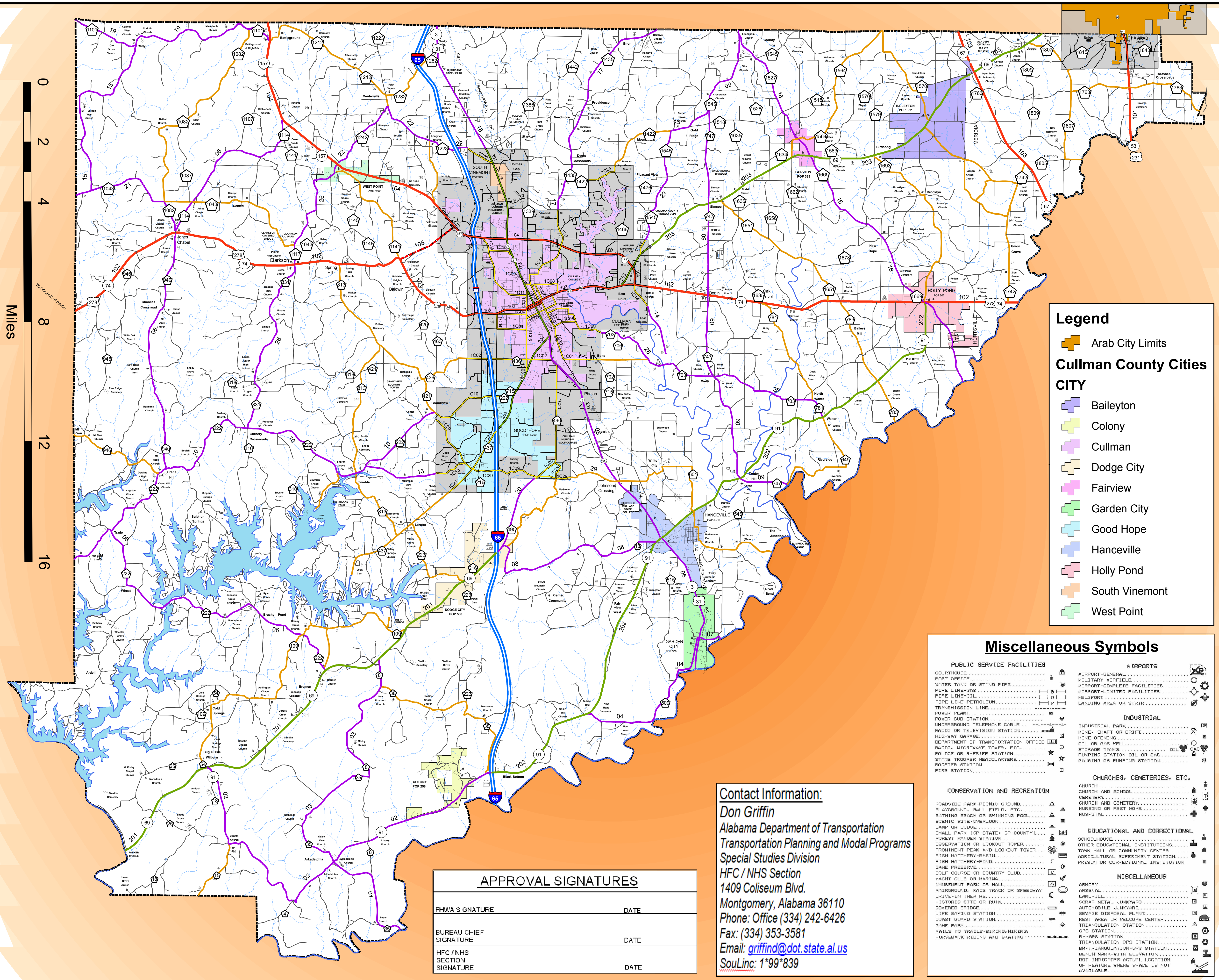


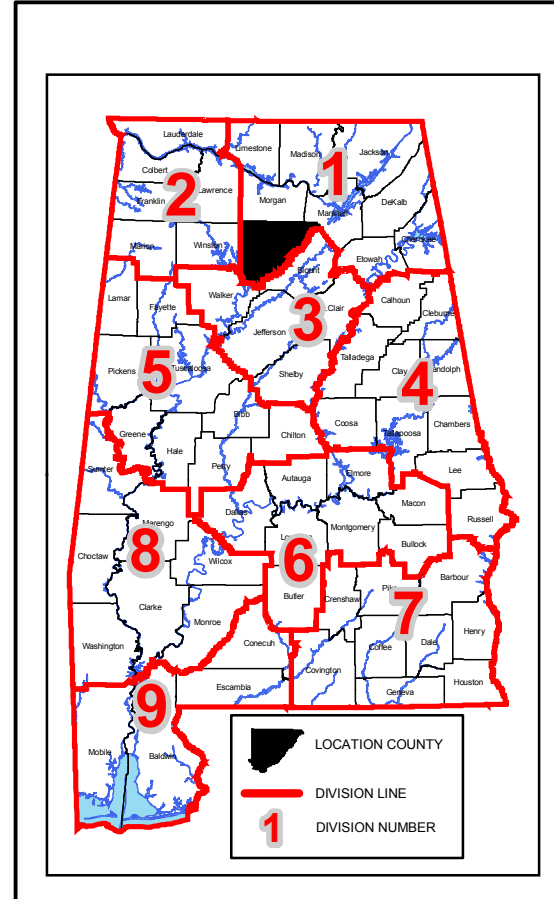
CULLMAN COUNTY HIGHWAY FUNCTIONAL CLASSIFICATION SYSTEM



Legend	
Functional Classification	Proposed Functional Class
Urban Interstate - 11	Urban Interstate - 11
Freeway - 12	Freeway - 12
Urban Principal Arterial - 14	Urban Principal Arterial - 14
Urban Minor Arterial - 16	Urban Minor Arterial - 16
Collector - 17	Collector - 17
Rural Interstate - 1	Rural Interstate - 1
Rural Principal Arterial - 2	Rural Principal Arterial - 2
Rural Minor Arterial - 6	Rural Minor Arterial - 6
Rural Major Collector - 7	Rural Major Collector - 7
Rural Minor Collector - 8	Rural Minor Collector - 8
Miscellaneous Items	
GIS.OpenWater_ALDOT Divisions	INTERSTATE
GIS.NHD_by_County	US ROUTES
GIS_Swamp_Marsh_HR_NHDWB_County	STATE ROUTES
TRANSDATA.urban_large	COUNTY ROADS
TRANSDATA.urban_large_study	FOREST ROADS
TRANSDATA.urban_small	
GIS.County	

MAP SCALE
SEE SCALE ON MAP

Legend	
Arab City Limits	
Cullman County Cities	
City	
Baileyton	
Colony	
Cullman	
Dodge City	
Fairview	
Garden City	
Good Hope	
Hanceville	
Holly Pond	
South Vinemont	
West Point	



Disclaimer of Liability
Due to the scale of this map neither the Alabama Department of Transportation (ALDOT) or the State of Alabama nor any employees and contractors thereof, make any warranty, expressed or implied, or assumes any legal liability, or responsibility, for the accuracy, completeness, or usefulness of any information contained on this map.

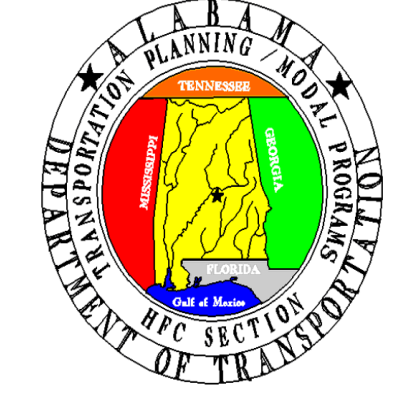
Miscellaneous Symbols	
PUBLIC SERVICE FACILITIES	AIRPORTS
COURTHOUSE	AIRPORT-GENERAL
POST OFFICE	MILITARY AIRFIELD
WATER TANK OR STAND PIPE	AIRPORT-COMLETE FACILITIES
PIPE LINE-GAS	AIRPORT-LIMITED FACILITIES
PIPE LINE-OIL	HELIPORT
PIPE LINE-PETROLEUM	LANDING AREA OR STRIP
TRANSMISSION LINE	
POWER PLANT	INDUSTRIAL
POWER SUB-STATION	INDUSTRIAL PARK
UNDERGROUND TELEPHONE CABLE	MINE, SHAFT OR DRIFT
RADIO OR TELEVISION STATION	MINE OPENING
HIGHWAY GARAGE	OIL OR GAS WELL
DEPARTMENT OF TRANSPORTATION OFFICE	STORAGE TANKS
RADIO, MICROWAVE TOWER, ETC.	PUMPING STATION-OIL OR GAS
POLICE OR SHERIFF STATION	GAUGENS OR PUMPING STATION
STATE TROOPER HEADQUARTERS	
BOOSTER STATION	CHURCHES, CEMETERIES, ETC.
FIRE STATION	CHURCH
	CHURCH AND SCHOOL
CONSERVATION AND RECREATION	CEMETERY
ROADSIDE PARK-PICNIC GROUND	CHURCH AND CEMETERY
PLAYGROUND, BALL FIELD, ETC.	NURSING OR REST HOME
BATHING BEACH OR SWIMMING POOL	HOSPITAL
SCENIC SITE-OVERLOOK	
CAMP OR LODGE	EDUCATIONAL AND CORRECTIONAL
SMALL PARK (SP-STATE) CP-COUNTY	SCHOOLHOUSE
FOREST BANNER STATION	OTHER EDUCATIONAL INSTITUTIONS
OBSERVATION OR LOOKOUT TOWER	TOWN HALL OR COMMUNITY CENTER
PROMINENT PEAK AND LOOKOUT TOWER	AGRICULTURAL EXPERIMENT STATION
FISH HATCHERY-BANK	PRISON OR CORRECTIONAL INSTITUTION
FISH HATCHERY-POND	
DAME PRESERVE	MISCELLANEOUS
GOLF COURSE OR GOLF CLUB	ARMORY
YACHT CLUB OR MARINA	LANDFILL
AMUSEMENT PARK OR MALL	SCRAP METAL YARD
FAIRGROUND, RACE TRACK OR SPEEDWAY	AUTOMOBILE JUNKYARD
DRIVE-IN THEATRE	SEWAGE DISPOSAL PLANT
HISTORIC SITE OR RUIN	REST AREA OR MELLOWE CENTER
COVERED BRIDGE	TRIANGULATION-OPS STATION
LIFE SAVING STATION	BM-TRIANGULATION-OPS STATION
COAST GUARD STATION	BN-TRIANGULATION-OPS STATION
DAME PARK	BENCH MARK-WITH ELEVATION
RAILS TO TRAILS-BIKING-HIKING	DOT INDICATES ACTUAL LOCATION
HORSEBACK RIDING AND SKATING	OF FEATURE WHERE SPACE IS NOT AVAILABLE

Contact Information:
Don Griffin
 Alabama Department of Transportation
 Transportation Planning and Modal Programs
 Special Studies Division
 HFC / NHS Section
 1409 Coliseum Blvd.
 Montgomery, Alabama 36110
 Phone: Office (334) 242-6426
 Fax: (334) 353-3581
 Email: griffind@dot.state.al.us
 SouLinc: 1*99*839

APPROVAL SIGNATURES	
FHWA SIGNATURE	DATE
BUREAU CHIEF SIGNATURE	DATE
HFC / NHS SECTION SIGNATURE	DATE

CULLMAN COUNTY - 22

ALABAMA DEPARTMENT OF TRANSPORTATION
 Highway Functional Classification
 Transportation Planning / Modal Programs Bureau



FHWA APPROVAL DATE		DRAWN BY: D.H. GRIFFIN	
DATE: April 18, 2005		DATE DRAWN: NOVEMBER 18, 2008	
NAME	DATE	COMMENTS	