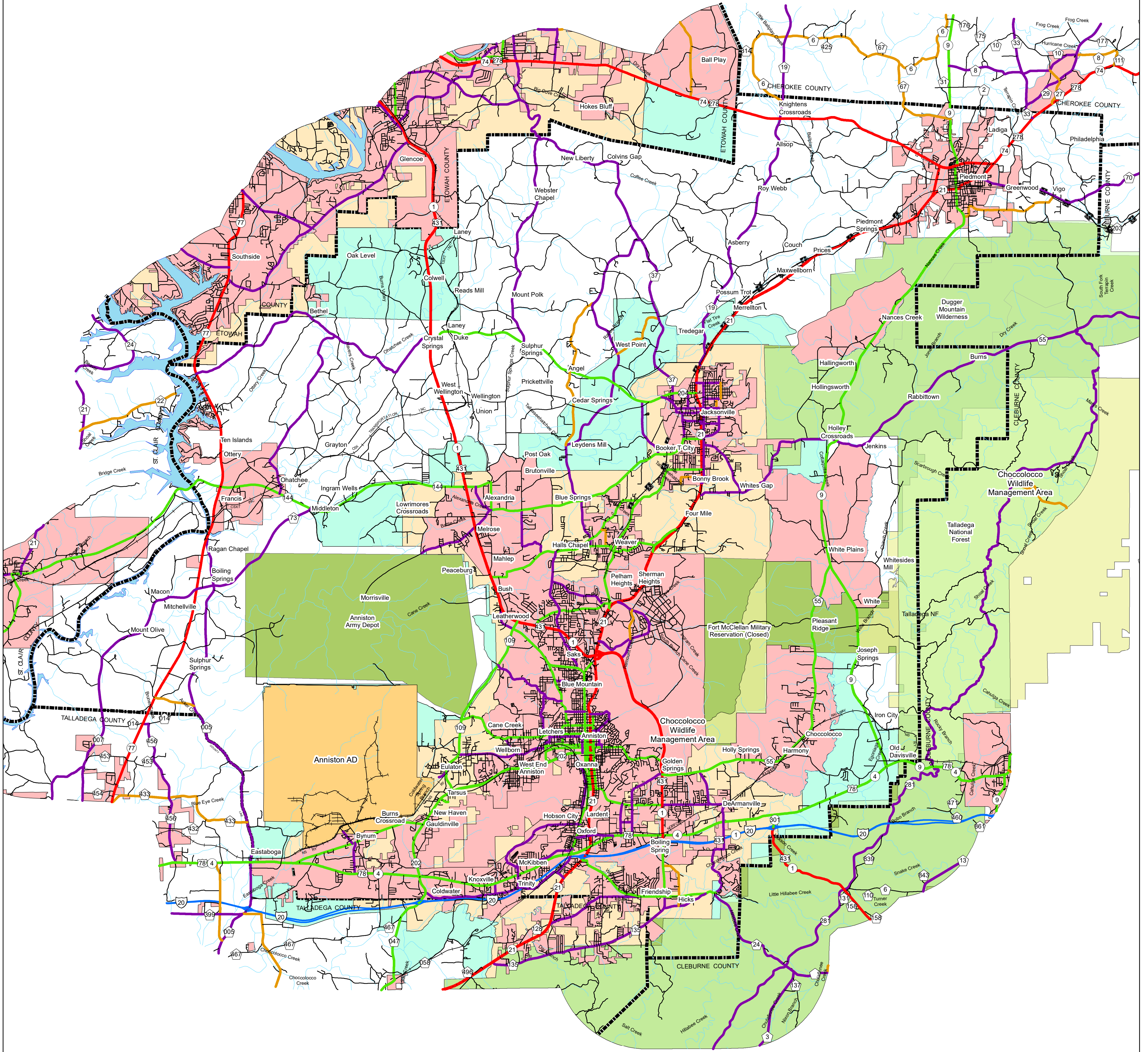
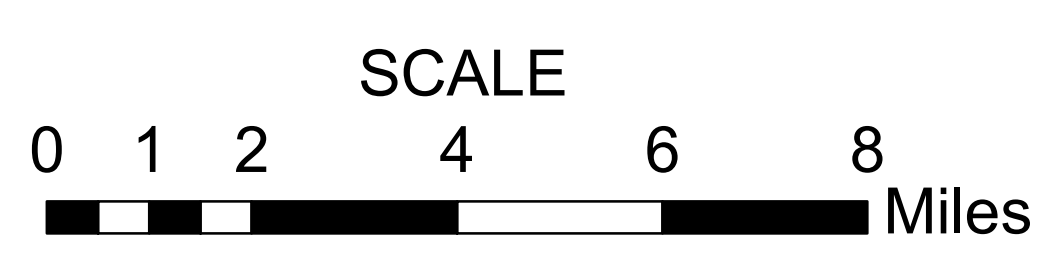


CALHOUN COUNTY HIGHWAY FUNCTIONAL CLASSIFICATION SYSTEM



APPROVED SIGNATURES	
Federal Highway Administration	DATE
Bureau Chief Maintenance	DATE



CALHOUN COUNTY ALABAMA DEPARTMENT OF TRANSPORTATION Highway Functional Classification

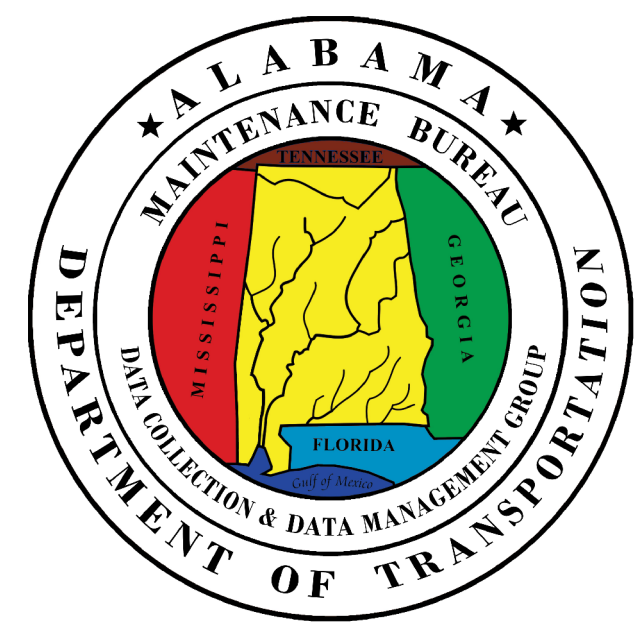
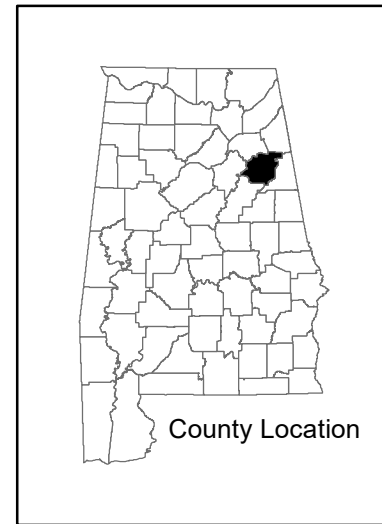


Federal Highway Administration
Alabama Division Office

REVISIONS	
DATE	COMMENTS
July, 2021	Added New Border and Legend

Disclaimer of Liability:
Due to the scale of this map neither the Alabama Department of Transportation (ALDOT) or the State of Alabama nor any employee and contractor thereof make any warranty, expressed or implied, or assume any legal liability or responsibility for the accuracy, completeness, or usefulness of any information contained on this map.

FHWA APPROVAL DATE
DATE: July, 2021



LEGEND

1 Interstate	2 Principal Arterial-Other Freeways and Expressways	3 Principal Arterial-Other	4 Minor Arterial	5 Major Collector	6 Minor Collector	7 Local Road	Proposed Road	Open Water	Large Urban Area	Large Urban Study Area	Small Urban Area	State Parks	County Boundary	Wildlife Management Area
Railroad	INTERSTATE	U.S.	STATE	COUNTY	City Limit	Federal Lands	Military Facilities	Chief Ladoga	Bike Trail					