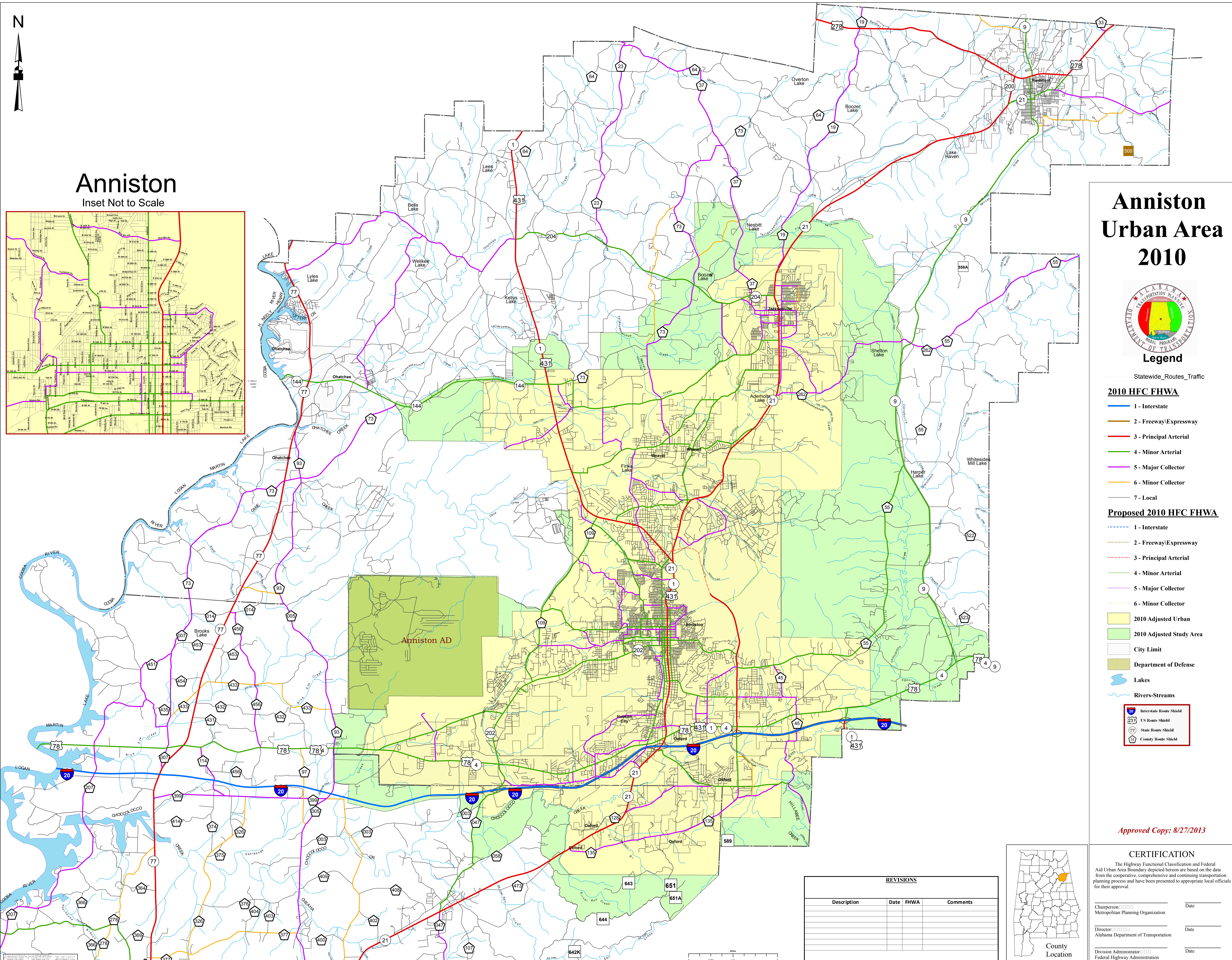
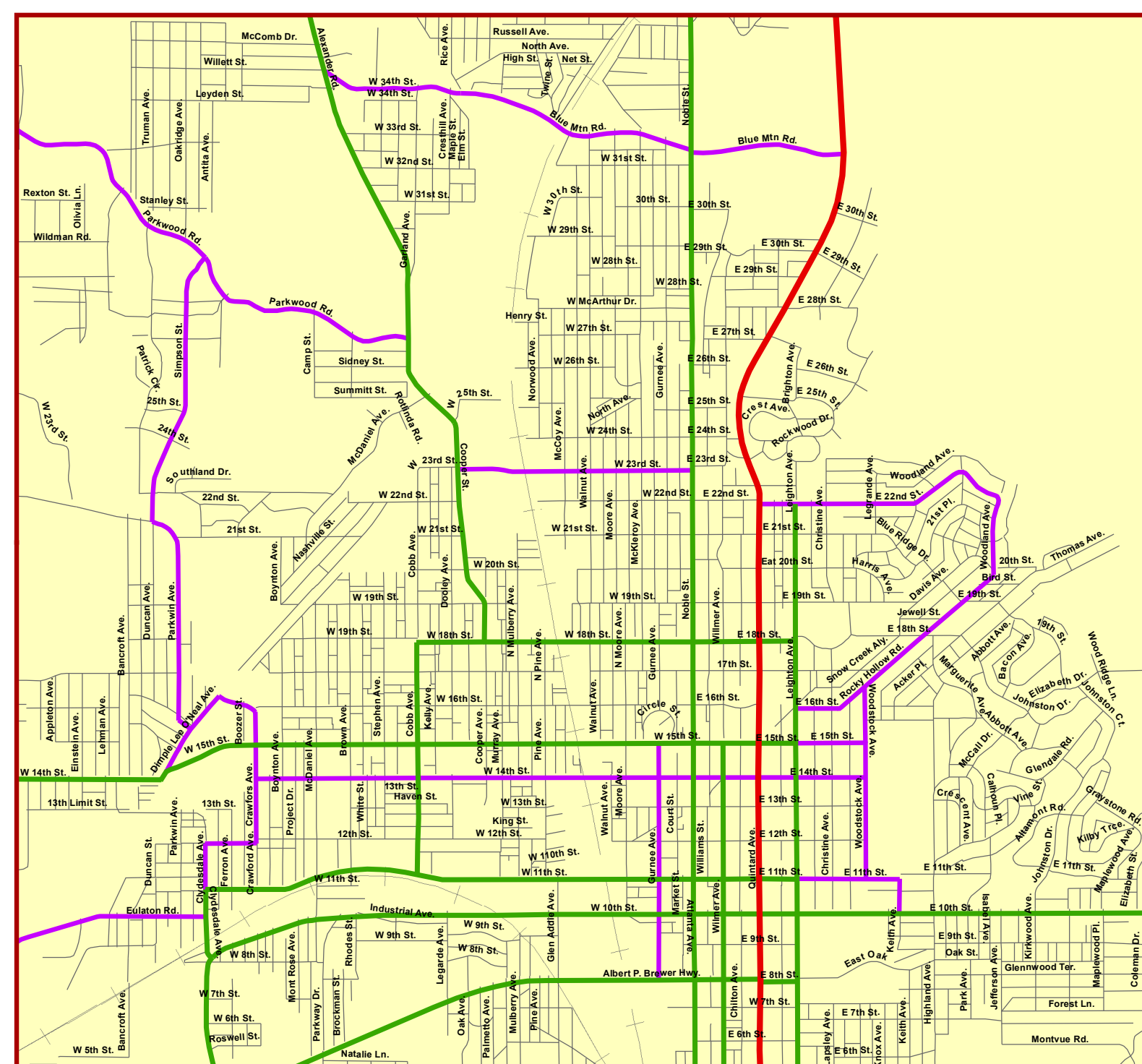
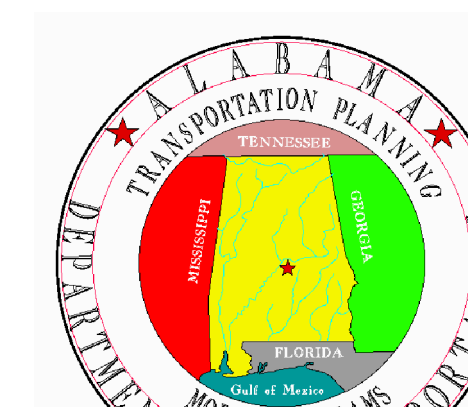


Anniston

Inset Not to Scale



Anniston Urban Area 2010



Legend

- Statewide_Routes_Traffic
- 2010 HFC FHWA**
 - 1 - Interstate
 - 2 - Freeway/Expressway
 - 3 - Principal Arterial
 - 4 - Minor Arterial
 - 5 - Major Collector
 - 6 - Minor Collector
 - 7 - Local
- Proposed 2010 HFC FHWA**
 - 1 - Interstate
 - 2 - Freeway/Expressway
 - 3 - Principal Arterial
 - 4 - Minor Arterial
 - 5 - Major Collector
 - 6 - Minor Collector
- 2010 Adjusted Urban
- 2010 Adjusted Study Area
- City Limit
- Department of Defense
- Lakes
- Rivers-Streams
- Interstate Route Shield
- US Route Shield
- State Route Shield
- County Route Shield

Approved Copy: 8/27/2013

CERTIFICATION

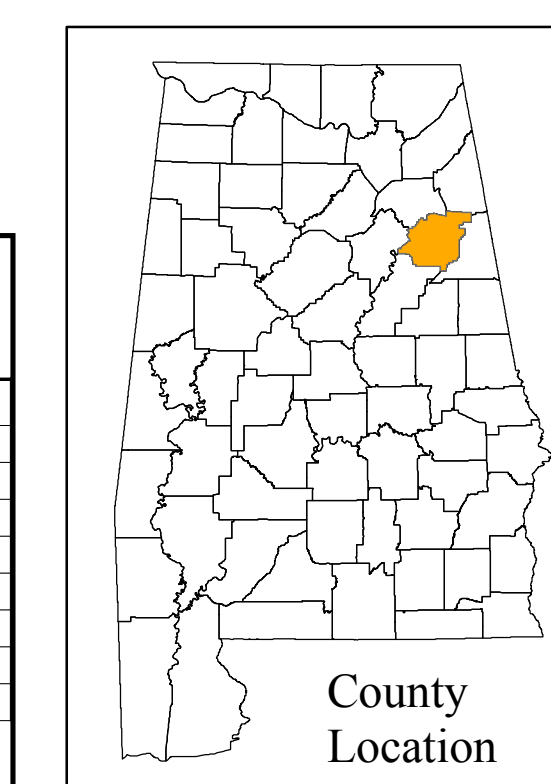
The Highway Functional Classification and Federal Aid Urban Area Boundary depicted hereon are based on the data from the cooperative, comprehensive and continuing transportation planning process and have been presented to appropriate local officials for their approval.

Chairperson _____ Date _____
 Metropolitan Planning Organization

Director _____ Date _____
 Alabama Department of Transportation

Division Administrator _____ Date _____
 Federal Highway Administration

REVISIONS			
Description	Date	FHWA	Comments



County Location

