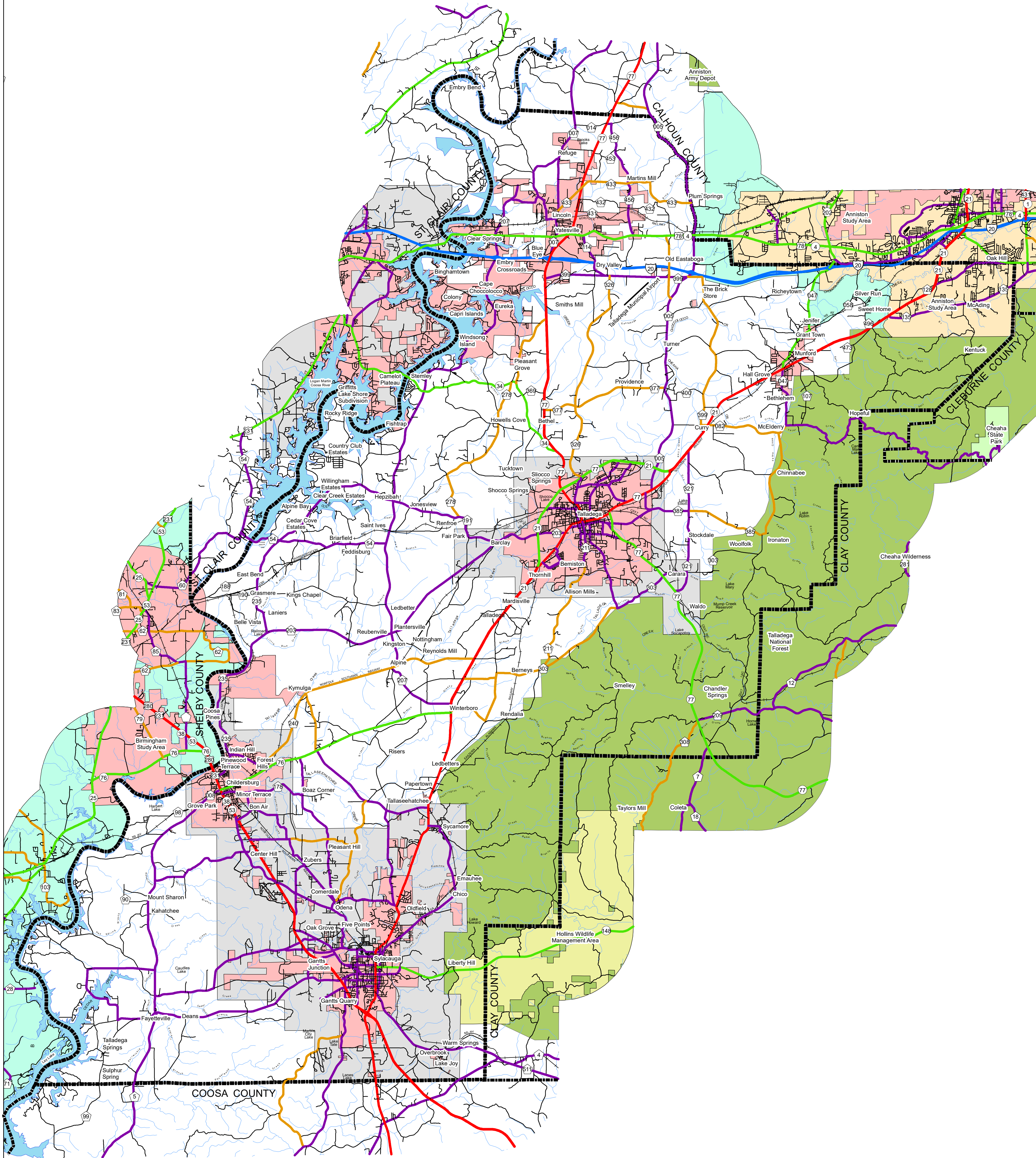
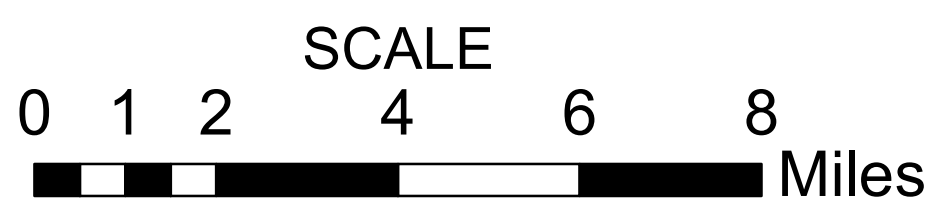



TALLADEGA COUNTY HIGHWAY FUNCTIONAL CLASSIFICATION SYSTEM



APPROVED SIGNATURES	
Federal Highway Administration	DATE
Bureau Chief Maintenance	DATE





Federal Highway Administration
Alabama Division Office

TALLADEGA COUNTY

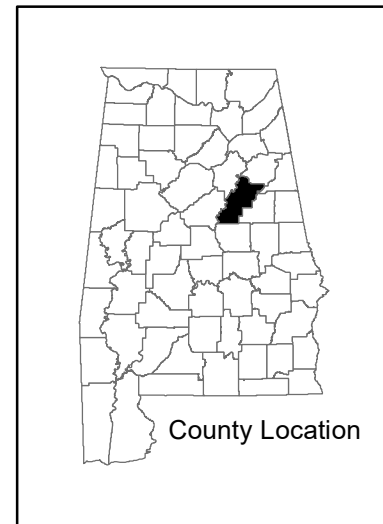
ALABAMA DEPARTMENT OF TRANSPORTATION

Highway Functional Classification

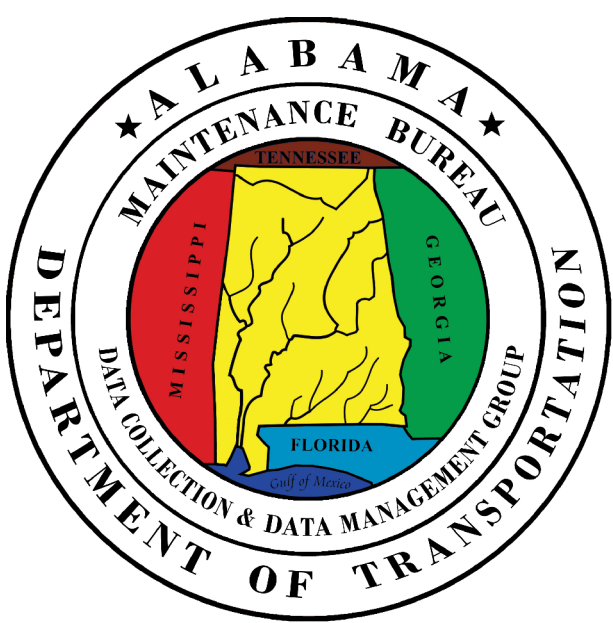
REVISIONS	
DATE	COMMENTS
August, 2022	Added New Border and Legend

Disclaimer of Liability:
Due to the scale of this map neither the Alabama Department of Transportation (ALDOT) or the State of Alabama nor any employee and contractor thereof, make any warranty, expressed or implied, or assume any legal liability or responsibility for the accuracy, completeness, or usefulness of any information contained on this map.

FHWA APPROVAL DATE: February, 2023



County Location



LEGEND

Highway Functional Classification

- 1 Interstate
- 2 Principal Arterial-Other Freeways and Expressways
- 3 Principal Arterial- Other
- 4 Minor Arterial
- 5 Major Collector
- 6 Minor Collector
- 7 Local Road
- Proposed Road
- Open Water
- Streams / Creeks
- Wildlife Management Area
- Large Urban Area
- Large Urban Study Area
- Small Urban Area
- Federal Lands
- County Boundary

Other Symbols:

- +— Railroad
- INTERSTATE
- U.S.
- STATE
- COUNTY
- City Limit
- State Parks