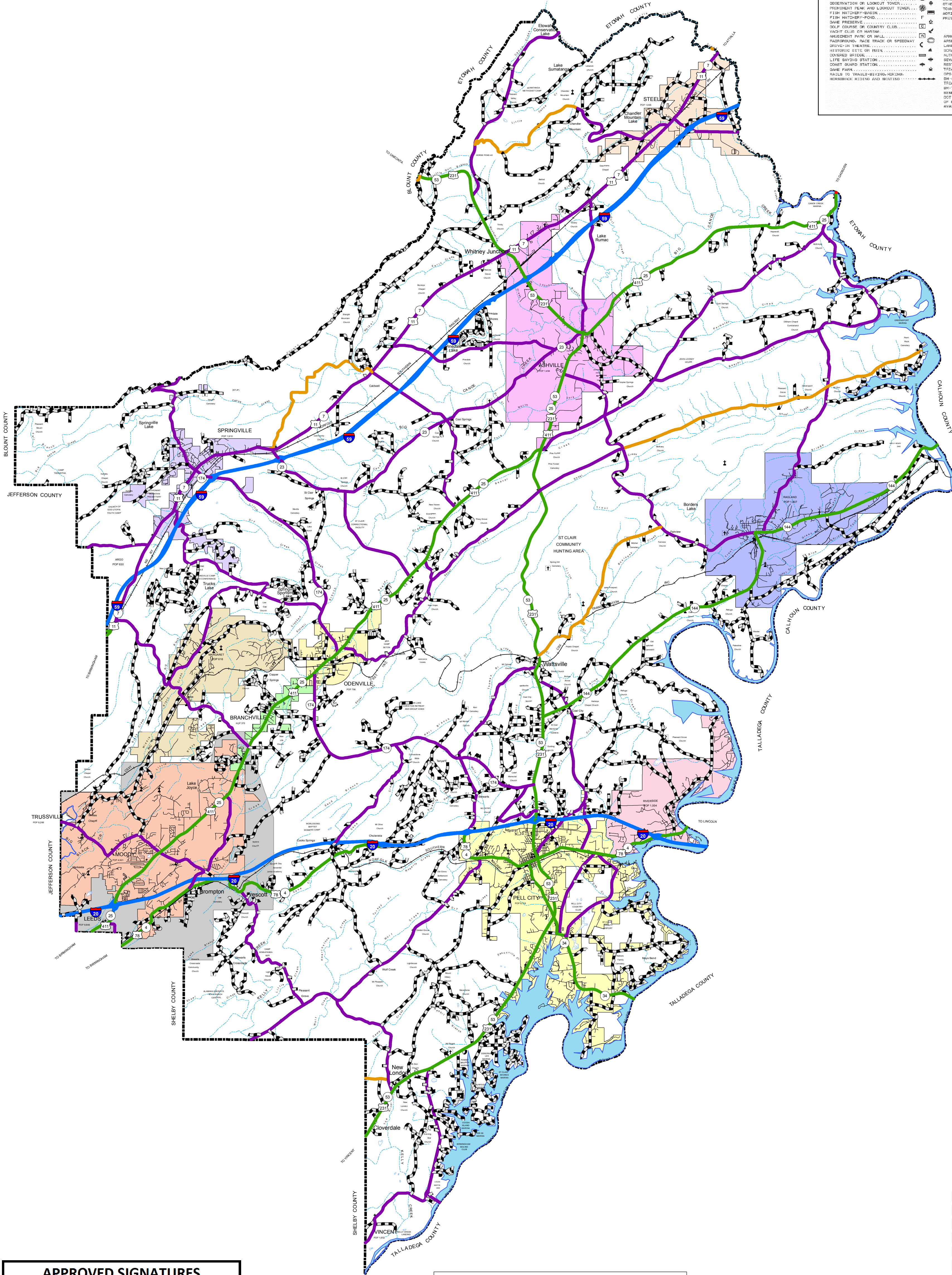
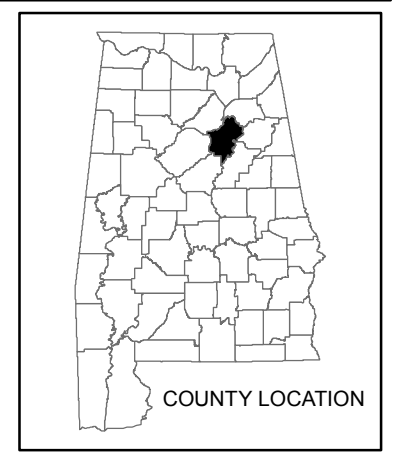


ST. CLAIR COUNTY HIGHWAY FUNCTIONAL CLASSIFICATION SYSTEM



Miscellaneous Symbols

PUBLIC SERVICE FACILITIES		AIRPORTS	
COURTHOUSE	AIRPORT - GENERAL
POST OFFICE	MILITARY AIRFIELD
WATER TOWER OR STAND PIPE	AIRPORT - COMBITE FACILITIES
PIPE LINE - GAS	AIRPORT - LIMITED FACILITIES
PIPE LINE - OIL	HELIPAD
PIPE LINE - PETROLEUM	LANDING AREA OR STRIP
TRASH RECYCLING LINE		
POWER PLANT		
POWER SUBSTATION		
UNDERGROUND TELEPHONE CABLE		
RADIO OR TELEVISION STATION		
DEPARTMENT OF TRANSPORTATION OFFICE		
RADIO, RECEIVING TOWER, ETC.		
POLICE OR SHERIFF STATION		
STATE INSPECTOR HEADQUARTERS		
ROOSTER STATION		
PIPE STATION		



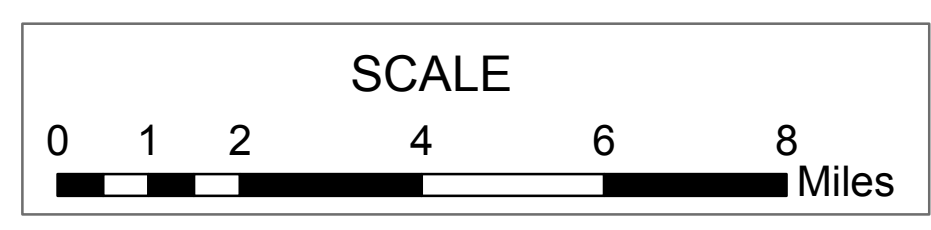
Legend

St. Clair County Cities

Ashville
Branchville
Margaret
Moody
Odenville
Pell City
Ragland
Riverside
Springville
Steele

APPROVED SIGNATURES

Federal Highway Administration	DATE
BUREAU CHIEF TRANSPORTATION PLANNING/MODAL PROGRAMS	DATE



ST. CLAIR COUNTY ALABAMA DEPARTMENT OF TRANSPORTATION Highway Functional Classification Transportation Planning / Modal Programs Bureau

LEGEND

Highway Functional Classification

1	Interstate
2	Principal Arterial-Other Freeways and Expressways
3	Principal Arterial-Other
4	Minor Arterial
5	Major Collector
6	Minor Collector
7	Local Road
Proposed Road
Open Water
Streams / Creeks
Swamp / Marsh
Large Urban Area
Large Urban Study Area
Small Urban Area
Parks
County Boundary

REVISIONS

NAME	DATE	COMMENTS
B. Whetstone	March 26, 2013	Reclassified CR 22 from a Minor Collector to a Major Collector
B. Whetstone	April 4, 2013	Reclassified a portion of CR 42 (Chandler Mtn Rd) from a Minor Collector to a Major Collector
B. Whetstone	August 28, 2013	Reclassified a portion of Hazelwood Dr. Veteran's Pkwy/Wolf Creek Rd from a Local Rd to a Major Collector

Disclaimer of Liability
 Due to the scale of this map neither the Alabama Department of Transportation (ALDOT) or the State of Alabama nor any employees or contractors thereof make any warranty, expressed or implied, or assume any legal liability or responsibility for the accuracy, completeness, or timeliness of any information contained on this map.

FHWA APPROVAL DATE
 DATE: September 18, 2013



Federal Highway Administration
 Alabama Division Office

