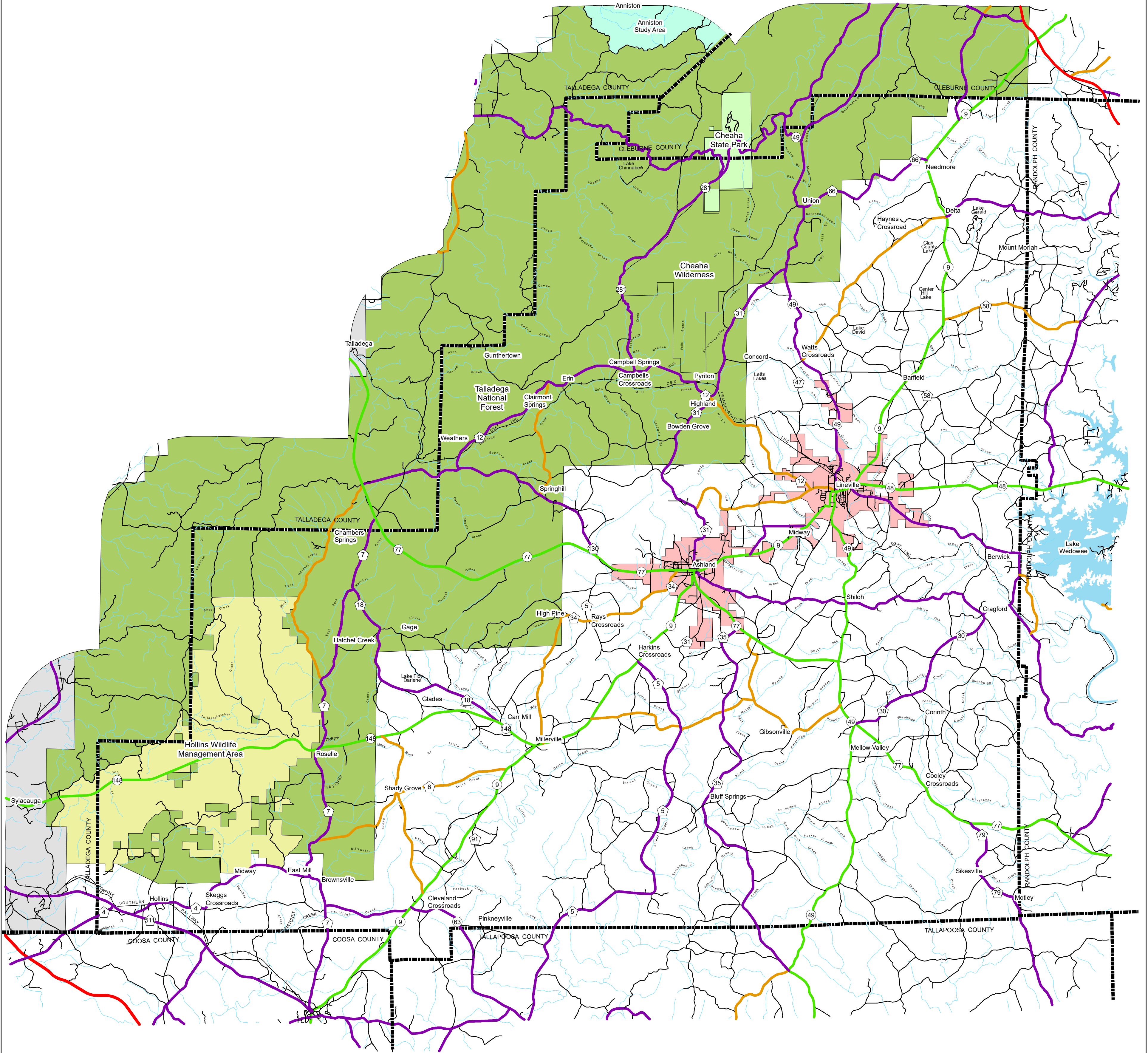
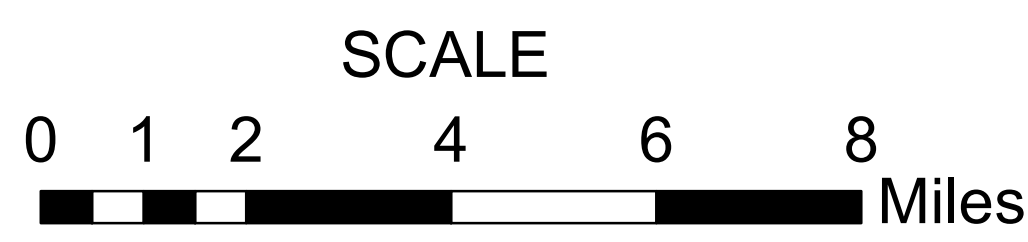


CLAY COUNTY HIGHWAY FUNCTIONAL CLASSIFICATION SYSTEM



APPROVED SIGNATURES	
Federal Highway Administration	DATE
Bureau Chief Maintenance	DATE



CLAY COUNTY ALABAMA DEPARTMENT OF TRANSPORTATION Highway Functional Classification

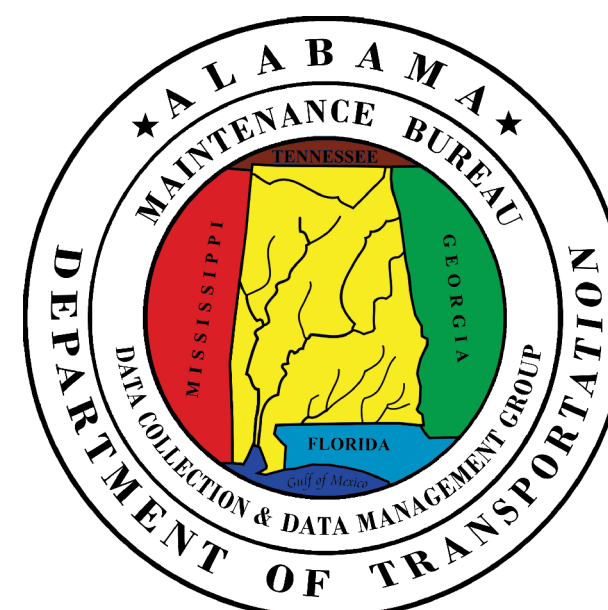
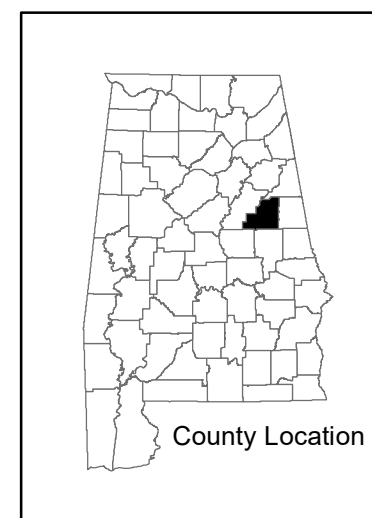
REVISIONS

DATE	COMMENTS
July, 2021	Added New Border and Legend
October, 2021	Reclassified CR 18 from a Local Rd to a Major Collector
October, 2021	Reclassified Skyway Dr and a Portion of Guntertown Rd from a Major Collector to a Local Rd
October, 2021	Reclassified Blakes Ferry Rd and a portion of Craigford Rd from a Minor Collector to a Major Collector

Disclaimer of Liability

Due to the scale of this map neither the Alabama Department of Transportation (ALDOT) or the State of Alabama are any employer and contractor thereof, make any warranty, expressed or implied, or assume any legal liability or responsibility for the accuracy, completeness, or usefulness of any information contained on this map.

FHWA APPROVAL DATE
DATE: November 5, 2021



LEGEND

- Highway Functional Classification**
- 1 Interstate
 - 2 Principal Arterial-Other Freeways and Expressways
 - 3 Principal Arterial-Other
 - 4 Minor Arterial
 - 5 Major Collector
 - 6 Minor Collector
 - 7 Local Road
 - Proposed Road
 - Open Water
 - Streams / Creeks
 - Large Urban Area
 - Large Urban Study Area
 - Small Urban Area
 - Wildlife Management Area
 - State Parks
 - County Boundary
- Railroad**
- INTERSTATE
 - U.S.
 - STATE
 - COUNTY
 - City Limit
 - Federal Lands



Federal Highway Administration
Alabama Division Office